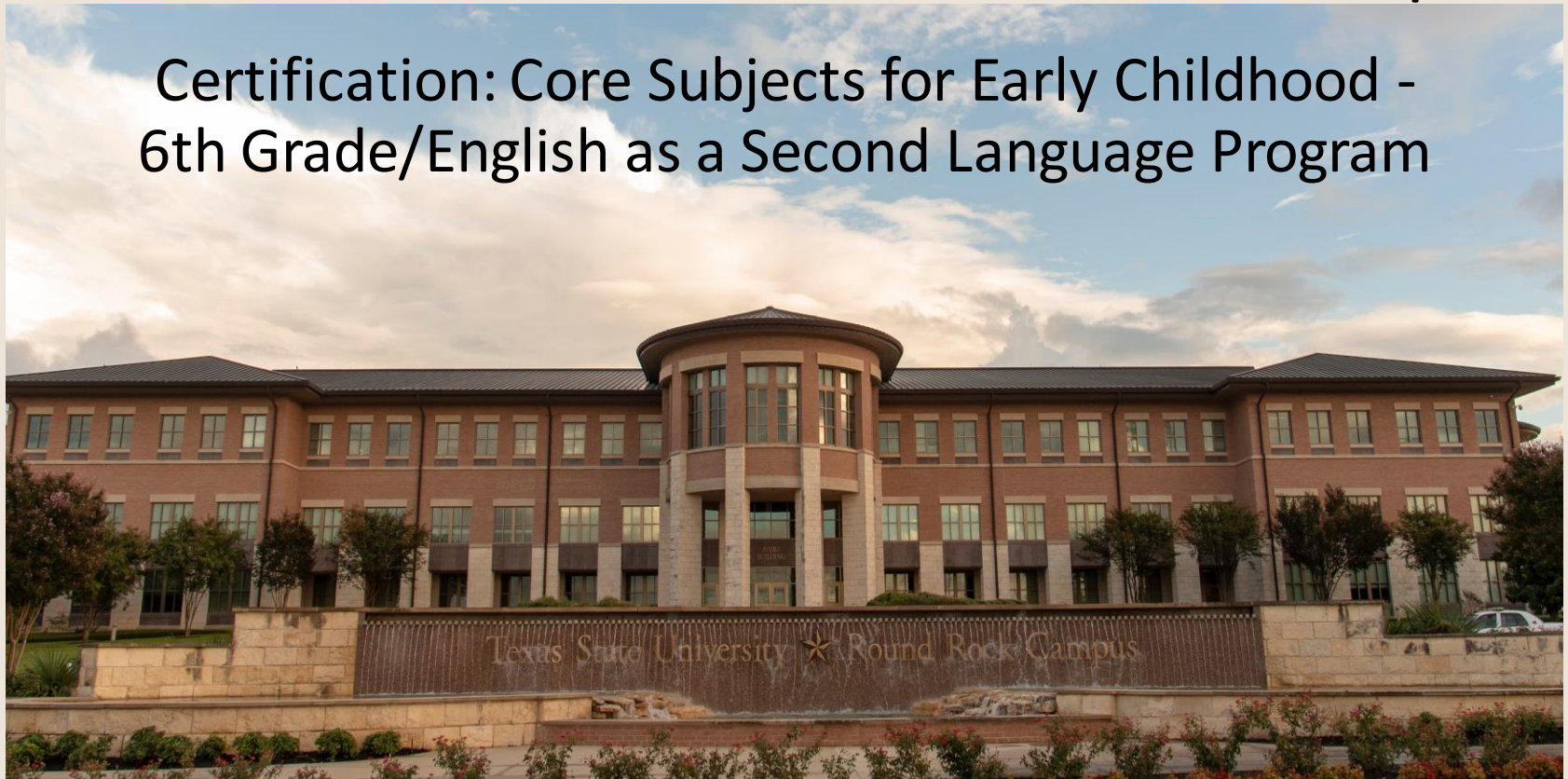


B.S. in Education: Information Session for the Round Rock Campus

Certification: Core Subjects for Early Childhood -
6th Grade/English as a Second Language Program



Faculty and Student Perspective

- Jodi Brooks
 - Graduated from Round Rock Campus in 2006
 - Started teaching at Round Rock Campus in 2012
- Jordan Reyna
 - Previous San Marcos student, current Round Rock student
 - Small class ratios
 - In-class experiences
 - Facilities and parking

ADMISSION

Transfer Admission Standards

admissions.txstate.edu/transfer

If you have been out of high school for at least one semester and completed transferable credit hours after graduating from high school, you are considered a transfer student.

TRANSFERABLE CREDIT HOURS	ADMISSION REQUIREMENTS
1-15 hours	2.0 cumulative GPA meet freshman admission standards
16-29 hours	2.5 cumulative GPA
30 or more	2.25 cumulative GPA

You must also be eligible to return to all previous institutions regardless of GPA or degrees received (e.g., free of suspensions, dismissal or enforced withdrawal).

ADMISSION

HOW TO APPLY

- 1) Submit the transfer application on *ApplyTexas* or *Coalition for College*.
 - 2) Submit official college/university transcripts from all schools attended.
 - 3) Submit the application fee of \$75 (nonrefundable).
Fee waivers are available to students who qualify.
-

After initial review, some applicants may be asked to submit additional information, including high school transcript and ACT/SAT scores.

PRIORITY DATES

Summer:	May 1
Fall:	July 15
Spring:	November 15

Questions?

www.admissions.txstate.edu

Courtney Quinn
Undergraduate Admissions Counselor
1555 University Blvd.
Round Rock, TX 78665

512.716.4030
courtney@txstate.edu

Academic Advising – Transfer Courses

- Transfer Planning Guide (TPG)
- Round Rock Specific Substitutions
 - **Two** Approved General Sciences (with TCCN)
 - ASTR 1303/1304
 - CHEM 1305/1311
 - GEOL 1345/1403/1404/1305
 - BIOL 1408/1409/1411/1413
 - **One** Approved Fine Arts Support (with TCCN)
 - ARTS 1301, MUSI 1306, or HUMA 1315
 - **Two** Education Courses (with TCCN)
 - EDUC 1301 & EDUC 2301

Academic Advising – Texas State Courses

- 2.75 Overall GPA
- Block Courses
 - Education Core Block
 - ECE/ESL Blocks
 - Field Based Block
 - Student Teaching
- Floater/Support Courses

Academic Advising

- Contact Information
 - Jon Murphy, Academic Advisor
 - j_m1455@txstate.edu
- Helpful Links
 - TPG's
 - <https://www.admissions.txstate.edu/future-students/transfer/tpg>
 - EC-6 ESL Generalist Webpage
 - <https://www.education.txstate.edu/advising/Degree-Planning/Majors-and-Programs/E6EG.html>
 - RRC Website
 - <https://www.rrc.txstate.edu/prospective.html>

Project Maestros

- Hispanic-Serving Institution Grant Program
- Transfer Navigation
 - Campus resources
 - In-person and online outreach
- Professional Development
 - C3 certificate
- Academic Coaching

Project Maestros

- Contact Information
 - maestros@txstate.edu
 - ucollege.txstate.edu/maestros