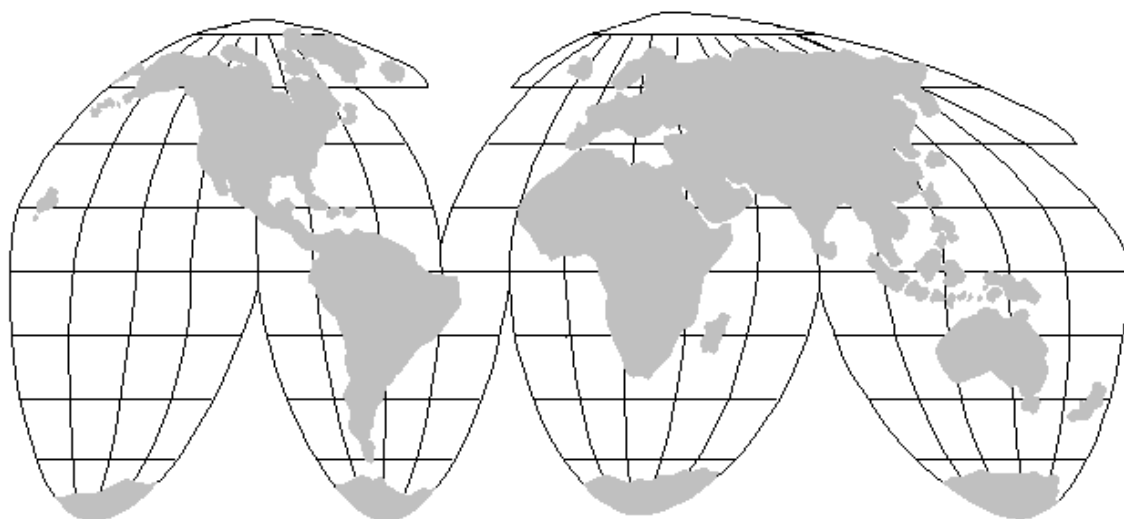


Texas State University



**UNIVERSITY
SAN MARCOS**

**INTERNATIONAL STUDENT
STATISTICAL REPORT**



Fall 2007

Prepared by the International Office
Academic Affairs

Table of Contents

1	Introduction.....	3
1.1	Why Study at Texas State University – San Marcos?	3
1.2	Who is an International Student?.....	3
1.3	Your Second Home - Texas State University San Marcos	3
1.3.1	Location	4
1.3.2	History.....	4
1.3.3	Colleges.....	4
1.3.4	Campus	4
1.4	About International Office – Texas State	4
2	Fall 2007 Summary.....	6
2.1	International Student Statistics 2002 – 2007	6
2.2	Top Ten Countries by Number of International Students.....	8
2.3	Student Statistics at Texas State University – San Marcos.....	10
2.3.1	Cumulative GPA by International Status and Classification for Fall 2007	10
2.4	Statistics By Nationality	12
2.5	Student Statistics Based on Academic College/TSIE.....	13
2.6	Top 5 Majors for International Students from Fall 2002 to Fall 2007.....	14
2.6.1	Fall 2002	14
2.6.2	Fall 2003	15
2.6.3	Fall 2004	16
2.6.4	Fall 2005	17
2.6.5	Fall 2006	19
2.6.6	Fall 2007	20
2.7	International Students statistics from Fall 2002 through Fall 2007.....	21
2.8	International Students statistics based on Academic Classification - Fall 2007.....	21
2.9	International Students Gender Breakdown - Fall 2007.....	22
2.10	International Students Residence Statistics - Fall 2007.....	23
2.11	Texas State International Student Trends: 2002 – 2007	23

1 Introduction

1.1 Why Study at Texas State University – San Marcos?

Texas State University – San Marcos is an international-student friendly institution. EducationUSA, which is a program of the U.S. Department of State Bureau of Educational and Cultural Affairs, has defined international-friendly institutions as institutions that “recognize that in an increasingly interdependent world there is educational value in having international students on the campus”.

Texas State recognizes the value international students bring to our institution and it is committed to providing international students with an enriching education experience. The professional staff at the International Office maintains membership in appropriate international educational organizations and associations to be actively engaged in the many regulatory, educational, and cultural issues related to international students. Texas State also provides special programs for international students to assist them in achieving a successful transition into our University. Some of these programs include an international student orientation, a welcome social for new international students, and options for additional English instruction for non-native speakers.

Overall Texas State is a friendly campus that has a lot to offer international students: prestigious programs, beautiful parks and campus, artistic, cultural, political and athletic events, and a convenient location in close proximity to two of the most eclectic cities in Texas, Austin and San Antonio.

1.2 Who is an International Student?

An international student is a student who enrolls in a U.S. academic program and whose status is non-immigrant. Common non-immigrant statuses are A-1, A-2, B1, B-2, E-1, E-2, F-1, F-2, H-1, H-4, J-1, J-2, L-1, L-2, M-1, R-1 and R-2. F-1 is the most common status used by international students. A student who has applied for or received permanent residency, refugee status or asylum in the U.S. is not considered to be an international student by the U.S. Citizenship & Immigration Services (USCIS).

1.3 Your Second Home - Texas State University San Marcos

Completed in 1903 the red-roofed, castle-like landmark Old Main is Texas State's first building. Texas State University-San Marcos is a doctoral granting university located in the burgeoning Austin-San Antonio corridor, the largest campus in the Texas State University System, and one of the 75 largest universities in the country.

Texas State's 28,121 students choose from 110 undergraduate and 88 masters and 7 Ph.D. graduate degree programs offered by seven colleges (Applied Arts, McCoy College of Business Administration, Education, Fine Arts and Communication, Health Professions, Liberal Arts, and Science), the University College, and the Graduate College.

With a diverse campus community including over 30% of the student body from ethnic minorities, Texas State is one of the top 20 producers of Hispanic baccalaureate graduates in the nation. See the University Fact book for more information.

Texas State is also the lead institution of a multi-institution teaching center offering several programs in the greater north Austin area. There are 1,508 Texas State students enrolled at the Round Rock Higher Education Center (RRHEC).

1.3.1 Location

Located on the edge of the Texas Hill Country, where black land prairies turn in to beautiful hills, Texas State enjoys a setting that is unique among Texas universities. The beauty of the crystal-clear San Marcos River and the stately cypress and pecan trees on the campus adds to the charm of its picturesque settings. The campus is in San Marcos, a community about halfway between Austin and San Antonio. Its location on the banks of the San Marcos River provides recreational and leisure activities for students throughout the year.



1.3.2 History

Authorized by the Texas Legislature in 1899, Southwest Texas State Normal School opened its doors in 1903. Over the years the Legislature broadened the institution's scope and changed its name, in succession, to Normal College, Teachers College, College, University, and in 2003 to Texas State University-San Marcos. Each name reflects the university's growth from a small teacher preparation institution to a major, multipurpose university. Texas State's original mission was to prepare Texas public school teachers, especially those of south central Texas. It became renowned for carrying out this mission, but today it does far more.

1.3.3 Colleges

The University offers programs in colleges of Applied Arts, Business Administration, Education, Fine Arts and Communication, Health Professions, Liberal Arts, and Science. In 1986 the University College was created to assure a broad general education for all students, regardless of major. In 1935 the Board of Regents authorized the formation of The Graduate College.

1.3.4 Campus

As the university's student population has grown - from 303 in 1903 to 28,121 in 2007 - the campus, too, has expanded, and today consists of a 456-acre main campus and 5,000 additional acres in recreational, instructional, farm and ranch land. Overlooking the campus and serving as a landmark since 1903 is Old Main, a red-gabled Victorian building restored to its original grandeur. In 1979, after adding a number of classroom buildings and residence halls, the university purchased the former San Marcos Baptist Academy adjacent to the original campus. In 1994 the 90-acre Aquarena Springs theme park, also adjacent to the main campus, was purchased. Campus facilities encourage a feeling that Texas State is a special place.

1.4 About International Office – Texas State

The International Office is committed to promoting diversity at Texas State University by supporting international students and the University community with specialized services and by globally marketing Texas State's educational programs.

Robert M. Seese, Ed. D.
Director, International Office
Texas State University-San Marcos

Report compiled by

Laura Cano Amaya
Coordinator, International Office
Texas State University-San Marcos

Sampath Jayarathna
Graduate Research Assistant,
International Office
Texas State University-San Marcos

2 Fall 2007 Summary

A total of 478 students from abroad, representing 69 countries, claim Texas State University San Marcos as their home this fall semester.

From the total number of 28,121 enrolled students, 1.69% comprised by the International Student body.

International undergraduate students comprise 0.79% of the total undergraduate body, from 24,038 total undergraduate students.

A total of 193 international graduate and professional students represent 4.9% of 4083 students at this level of study.

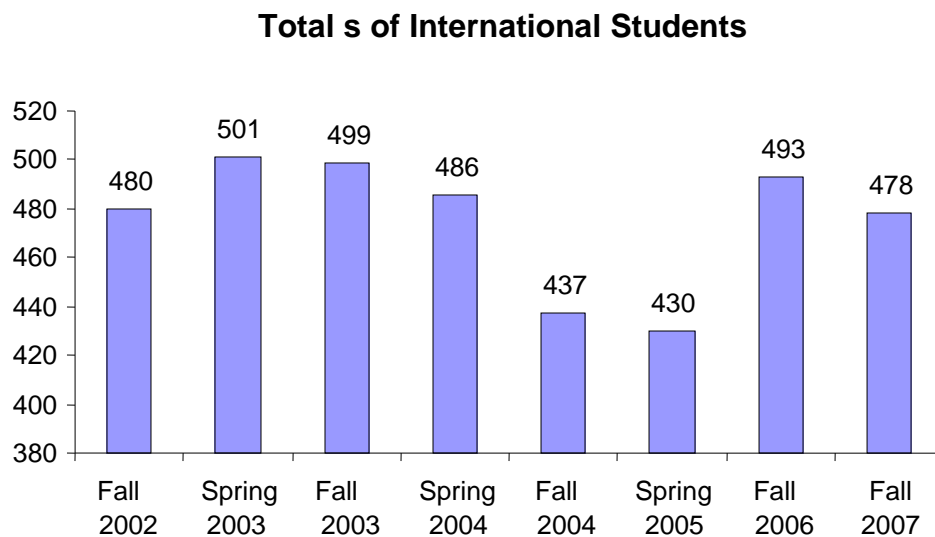
School Information: Texas State University -San Marcos		
Student Body: Coed	Calendar: Semester	Highest Offering: Post-doctoral research

International Student Statistics: 2007 Fall			
Undergraduates: 190	Graduates: 221	Other: 20*	Total: 431** OPT: 47

*Others include Post Graduate and intensive English students.

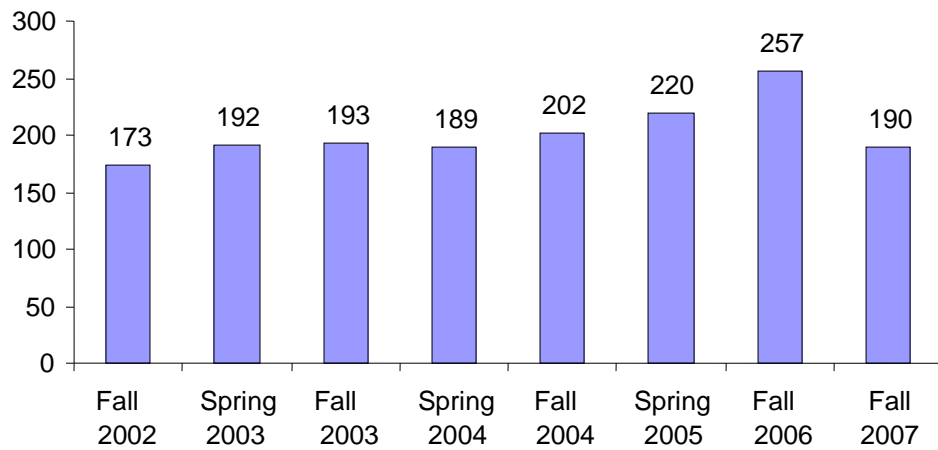
** Total number of students except OPT.

2.1 International Student Statistics 2002 – 2007

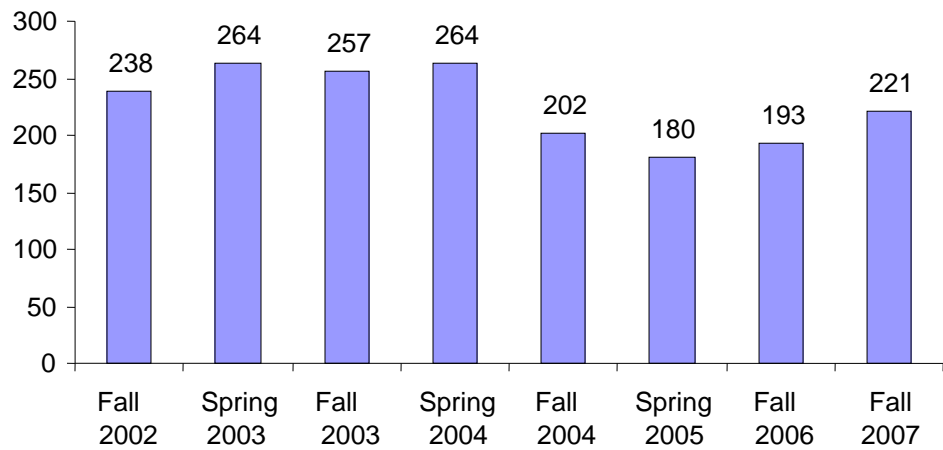


Note: Years from 2002 – 2006 do not include students on OPT.

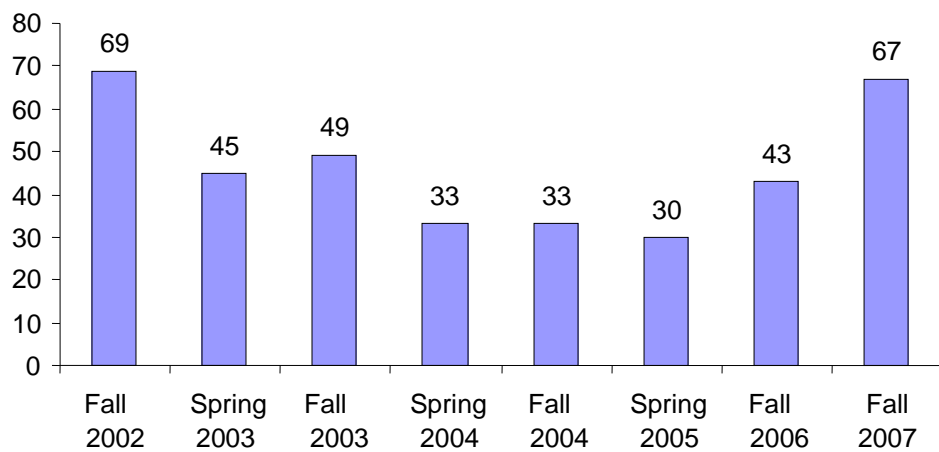
Total Undergraduate Statistics



Total Graduate Statistics



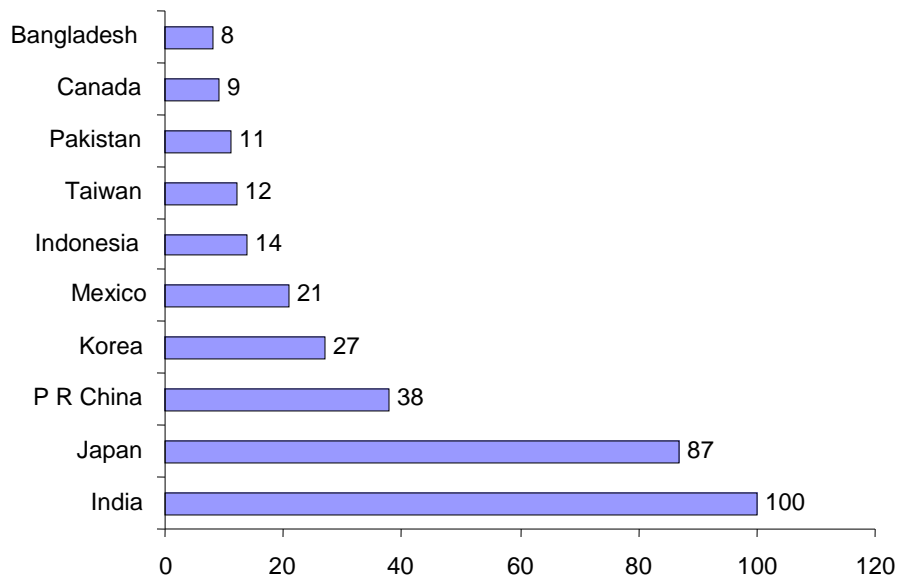
Total *Other Statistics



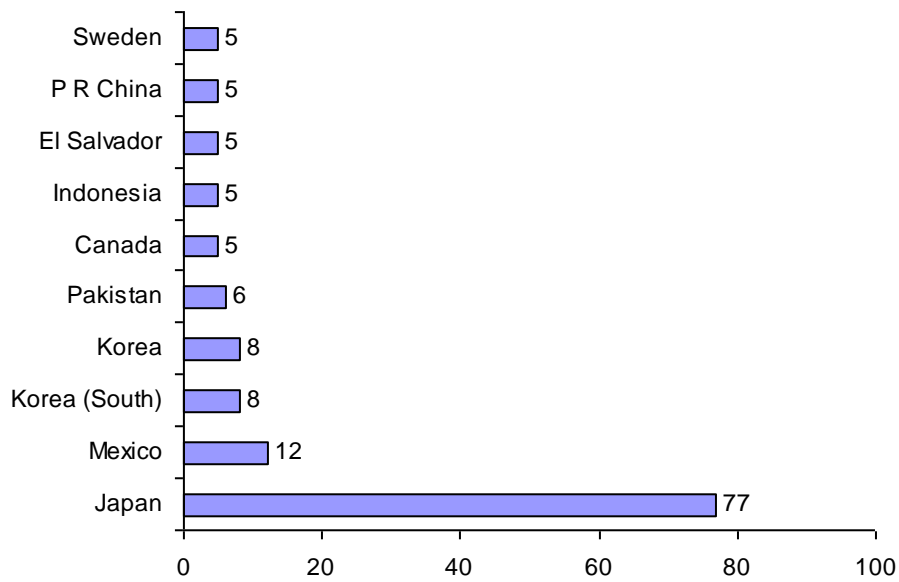
*Others include Post Graduate, OPT and intensive English students.

2.2 Top Ten Countries by Number of International Students

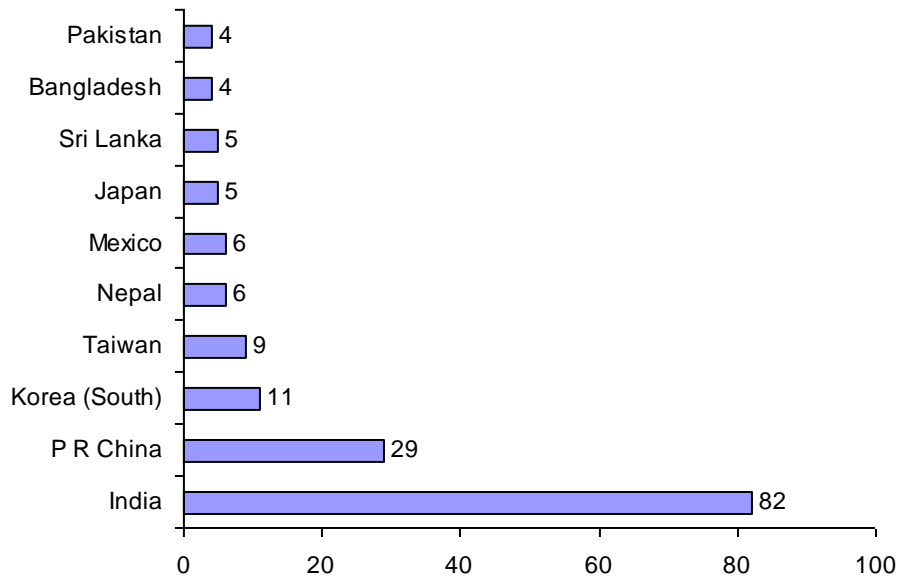
Top Ten countries by Number of International Students



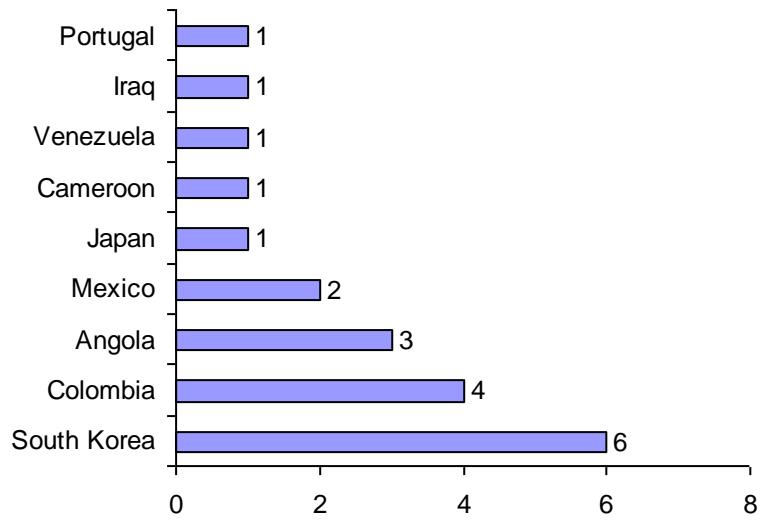
Top Ten by Undergraduate Enrollment



Top Ten by Graduate Enrollment

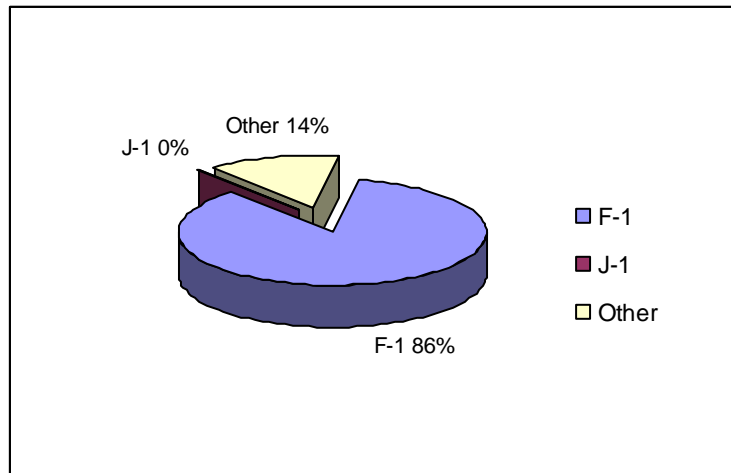


Top by *Other Enrollment



*Others include Post Graduate and intensive English students.

2.3 Student Statistics at Texas State University – San Marcos



International Students	U.S. Citizens*	Texas State Student Total*
478	27,643	28,121
F Visa	421	
J Visa	1	
**Other Visa	56	

**Other visa include A, H, L, K, R and TN.

*Source data from Office of the Vice President for Student Affairs

	U.S.Citizens/Permanent Residents	International	Total
Undergraduates	23848	190	24038
Graduates	3862	221	4083

2.3.1 Cumulative GPA by International Status and Classification for Fall 2007

	International Cumulative GPA	Non-International Cumulative GPA
Freshman	3.12	2.53
Sophomore	3.21	2.75
Junior	3.04	2.82
Senior	3.22	2.93
Masters	3.48	3.65
Post-Bacc	3.31	3.55
Doctoral	3.86	3.91
Total	3.34	2.92
Undergrad Total	3.17	2.81

Note: International includes A2, B1, E2, F1, F2, G1, H1, H2, J1, L2

*Source data from the office of Institutional Research.

Cumulative GPA Comparison of Graduate Students in Business Administration and Elsewhere by International Status and Classification for Fall 2006

		International Cumulative GPA	Non-International Cumulative GPA
McCoy College of Business Administration	Masters	3.55	3.41
	Post-Bacc	3.64	3.36
	Total	3.56	3.41
Other Colleges	Masters	3.46	3.68
	Post-Bacc	3.18	3.56
	Doctoral	3.86	3.91
	Total	3.48	3.68
Total	Masters	3.48	3.65
	Post-Bacc	3.31	3.55
	Doctoral	3.86	3.91
	Total	3.50	3.65
Note: International includes A2, B1, E2, F1, F2, G1, H1, H2, J1, L2			

*Source data from the office of Institutional Research.

Comparison of Cumulative GPA of Graduate Students in Computer Science, Computer Info Systems and Elsewhere by International Status and Classification

		International Cumulative GPA	Non-International Cumulative GPA
Computer Science	Masters	3.32	3.45
	Post-Bacc	2.98	2.81
	Total	3.30	3.32
Other Departments	Masters	3.57	3.65
	Post-Bacc	3.49	3.58
	Doctoral	3.86	3.91
	Total	3.60	3.66
Total	Masters	3.48	3.65
	Post-Bacc	3.31	3.55
	Doctoral	3.86	3.91
	Total	3.50	3.65

*Source data from the office of Institutional Research.

2.4 Statistics By Nationality

Country	Undergraduate	Graduate	Other	Total
Angola	-	-	3	3
Argentina	2	-	-	2
Australia	-	1	-	1
Azerbaijan	1	-	-	1
Bangladesh	1	4	3	8
Barbados	1	1	-	2
Bolivia	1	-	-	1
Bosnia and Herzegovina	-	1	-	1
Brazil	1	3	1	5
Cameroon	-	-	1	1
Canada	5	3	1	9
Colombia	2	2	4	8
Costa Rica	1	1	-	2
Denmark	1	-	-	1
Ecuador	-	3	1	4
El Salvador	5	-	-	5
Ethiopia	1	1	-	2
France	1	1	-	2
Germany	1	1	-	2
Ghana	-	1	-	1
Hong Kong	-	1	1	2
India	2	82	16	100
Indonesia	5	4	5	14
Iraq	-	-	1	1
Israel	3	-	-	3
Italy	-	3	-	3
Jamaica	1	3	-	4
Japan	77	5	4	86
Jordan	1	-	-	1
Kazakhstan	-	1	-	1
Kenya	-	2	-	2
Korea	8	11	8	27
Latvia	1	-	-	1
Lebanon	-	1	-	1
Malaysia	1	-	1	2
Mexico	12	6	3	21
Moldova	1	-	-	1
Morocco	1	2	-	3
Nepal	-	6	-	6
Netherlands	4	-	-	4
Nicaragua	1	-	-	1
Niger	2	-	-	2
Nigeria	1	1	-	2
P R China	5	29	4	38
Pakistan	6	4	1	11

Panama	-	1	-	1
Paraguay	-	-	1	1
Portugal	-	-	1	1
Russia	1	2	-	3
Saudi Arabia	-	1	-	1
Scotland	1	1	-	2
Serbia	-	1	-	1
Slovenia	-	-	1	1
South Africa	2	-	-	2
Spain	-	-	1	1
Sri Lanka	-	5	-	5
St. Kitts and Nevis	1	-	-	1
Sweden	5	-	-	5
Switzerland	1	-	-	1
Taiwan	-	9	3	12
Tanzania	1	-	-	1
Thailand	1	2	-	3
Togo	1	-	-	1
Turkey	1	1	-	2
Uganda	-	-	1	1
United Kingdom	1	-	-	1
Venezuela	2	2	1	5
Vietnam	1	-	-	1
Zambia	2	-	-	2
Country not specified	13	12	-	25
Totals	190	221	67	478
A total of 80 countries were represented this semester				

2.5 Student Statistics Based on Academic College/TSIE

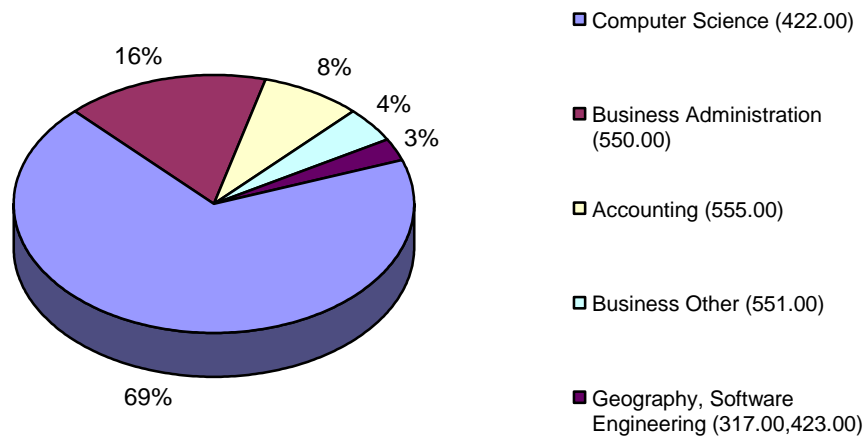
Academic Colleges/TSIE	Undergraduate	Graduate	OPT	Other	Total
College of Applied Arts	4	-	-	-	4
College of Business Administration	31	48	11	-	90
College of Education	25	23	1	-	49
College of Fine Arts & Communication	27	17	5	-	49
College of Health Professions	3	14	1	-	18
College of Liberal Arts	18	21	6	-	45
College of Science	36	98	23	-	157
University College / Undecided	46	-	-	-	46
Texas State Intensive English	-	-	-	20	20
Total	190	221	47	20	478

2.6 Top 5 Majors for International Students from Fall 2002 to Fall 2007

2.6.1 Fall 2002

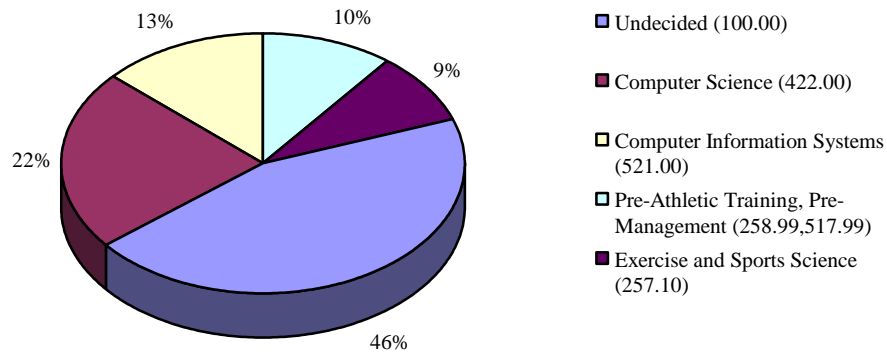
#	Major	Number of International Graduate Students
1	Computer Science (422.00)	143
2	Business Administration (550.00)	34
3	Accounting (555.00)	17
4	Business Other (551.00)	9
5	Geography, Software Engineering (317.00,423.00)	6

Number of International Graduate Students Fall 2002



#	Major	Number of International Undergraduate Students
1	Undecided (100.00)	30
2	Computer Science (422.00)	15
3	Computer Information Systems (521.00)	9
4	Pre-Athletic Training, Pre-Management (258.99,517.99)	7
5	Exercise and Sports Science (257.10)	6

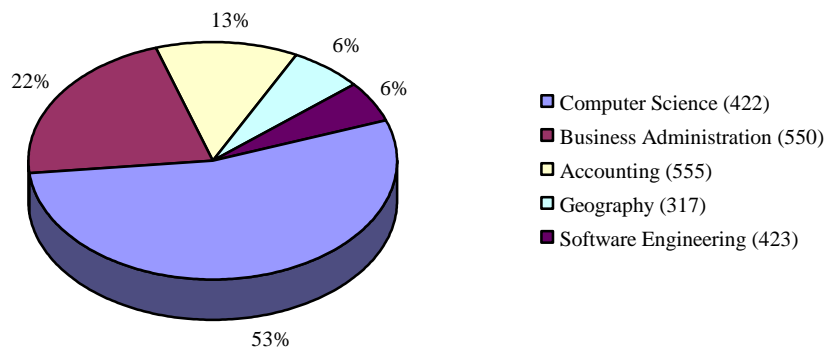
Number of International Undergraduate Students Fall 2002



2.6.2 Fall 2003

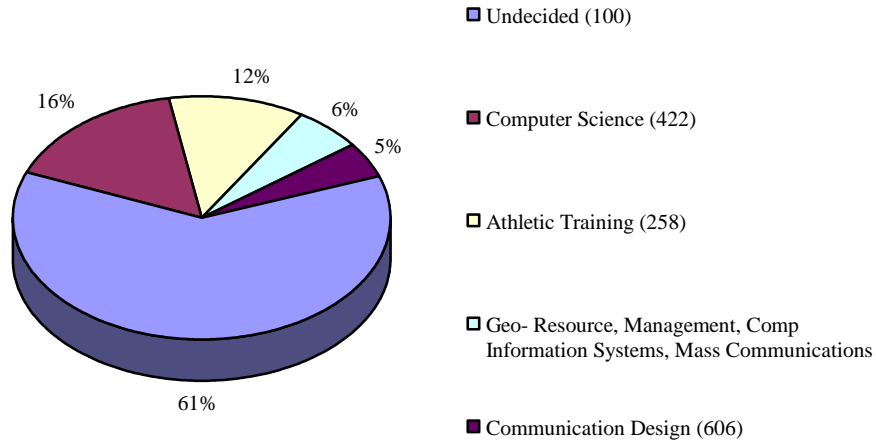
#	Major	Number of International Graduate Students
1	Computer Science (422)	95
2	Business Administration (550)	38
3	Accounting (555)	22
4	Geography (317)	11
5	Software Engineering (423)	10

Number of International Graduate Students Fall 2003



#	Major	Number of International Undergraduate Students
1	Undecided (100)	64
2	Computer Science (422)	17
3	Athletic Training (258)	12
4	Geo- Resource and En Stud, Management, Computer Information Systems, Mass Communications (315,517,521,670)	6
5	Communication Design (606)	5

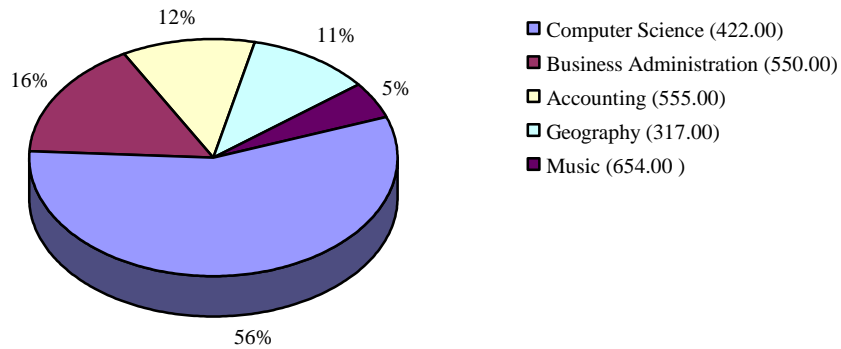
Number of International Undergraduate Students Fall 2003



2.6.3 Fall 2004

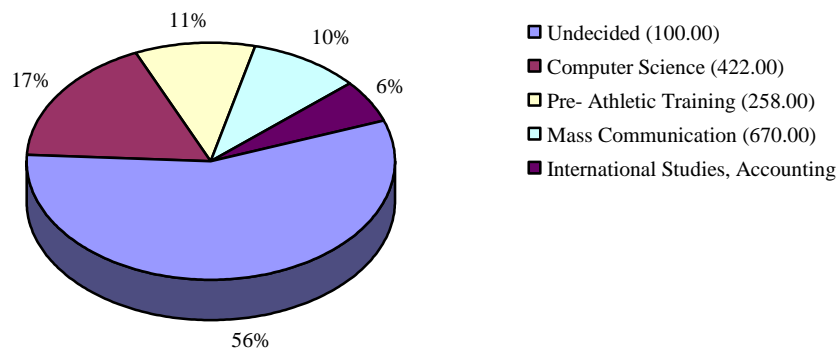
#	Major	Number of International Graduate Students
1	Computer Science (422.00)	78
2	Business Administration (550.00)	22
3	Accounting (555.00)	16
4	Geography (317.00)	15
5	Music (654.00)	7

Number of International Graduate Students Fall 2004



#	Major	Number of International Undergraduate Students
1	Undecided (100.00)	58
2	Computer Science (422.00)	18
3	Pre- Athletic Training (258.00)	11
4	Mass Communication (670.00)	10
5	International Studies, Accounting (330.00,511.00)	6

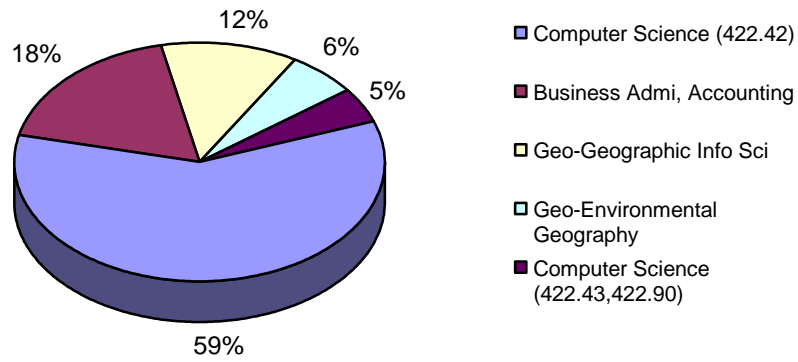
Number of International Undergraduate Students Fall 2004



2.6.4 Fall 2005

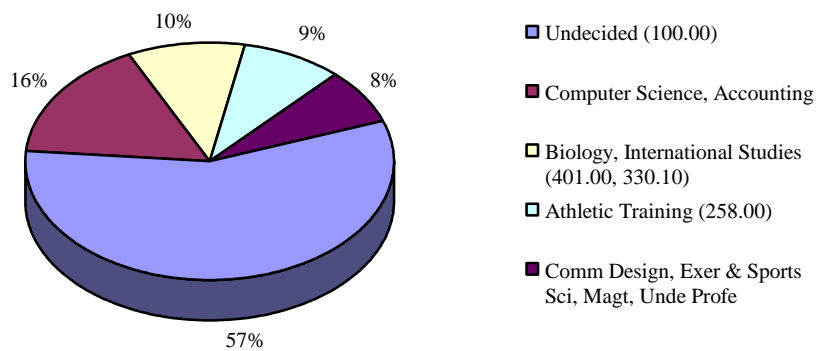
#	Major	Number of International Graduate Students
1	Computer Science (422.42)	49
2	Business Administration, Accounting (550.00,555.00)	15
3	Geo-Geographic Info Science (317.63)	10
4	Geo-Environmental Geography (317.61)	5
5	Computer Science (422.43,422.90)	4

Number of International Graduate Students Fall 2005



#	Major	Number of International Undergraduate Students
1	Undecided (100.00)	45
2	Computer Science, Accounting	13
3	Biology, International Studies	8
4	Athletic Training (258.00)	7
5	Communication Design, Exercise & Sports Science, Management, Undecided Professional	6

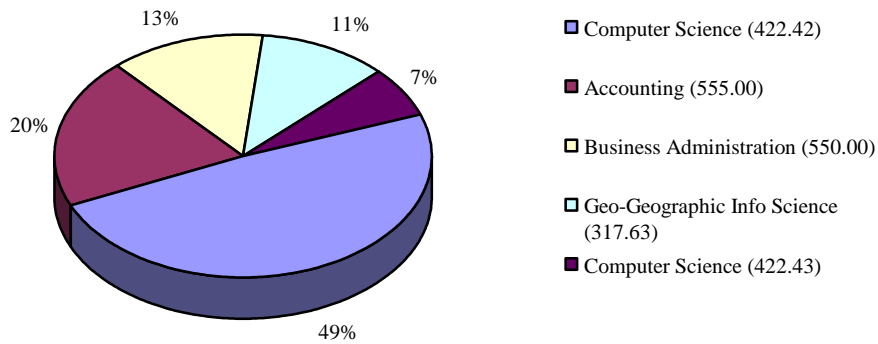
Number of International Undergraduate Students Fall 2005



2.6.5 Fall 2006

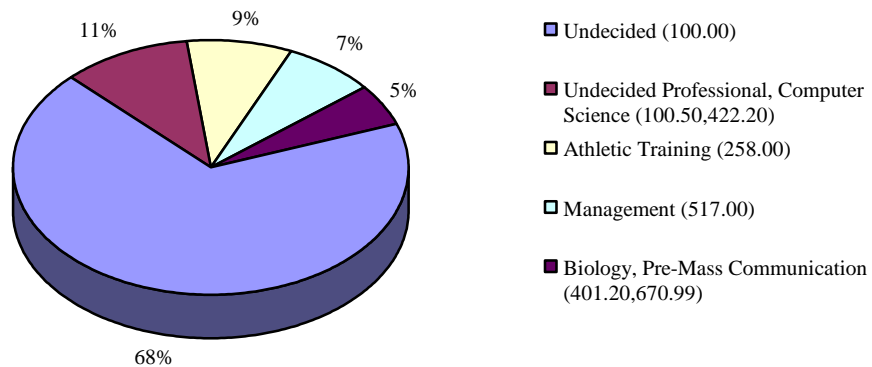
#	Major	Number of International Graduate Students
1	Computer Science (422.42)	44
2	Accounting (555.00)	18
3	Business Administration (550.00)	12
4	Geo-Geographic Info Science	10
5	Computer Science (422.43)	6

Number of International Graduate Students Fall 2006



#	Major	Number of International Undergraduate Students
1	Undecided (100.00)	64
2	Undecided Professional, Computer Science	10
3	Athletic Training (258.00)	8
4	Management (517.00)	7
5	Biology, Pre-Mass Communication	5

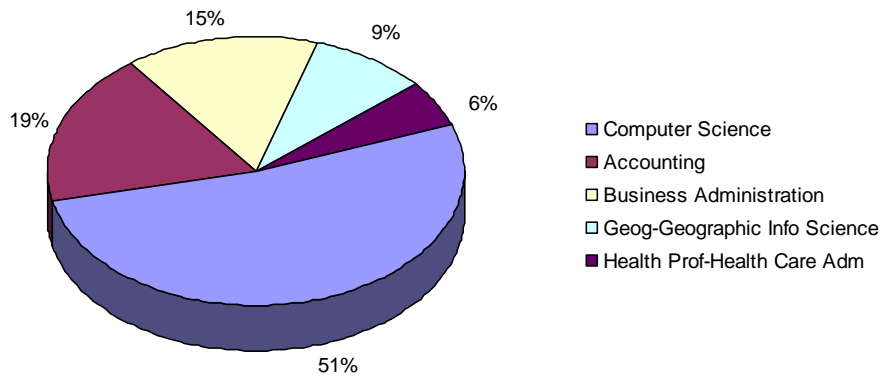
Number of International Undergraduate Students Fall 2006



2.6.6 Fall 2007

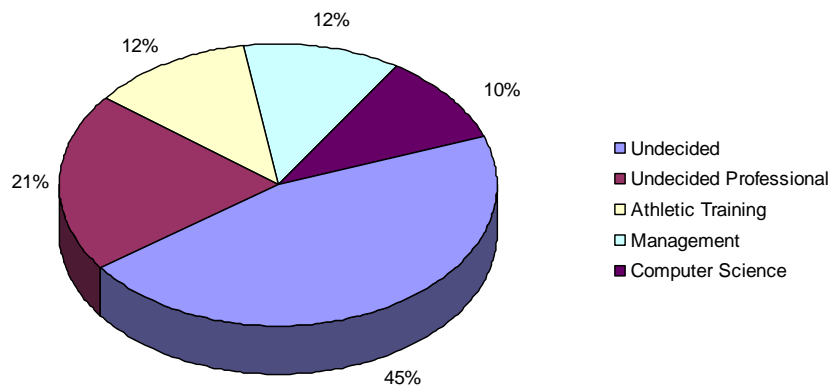
#	Major	Number of International Graduate Students
1	Computer Science	56
2	Accounting	20
3	Business Administration	16
4	Geog-Geographic Info Science	10
5	Health Prof-Health Care Adm	6

Number of International Graduate Students Fall 2007



#	Major	Number of International Undergraduate Students
1	Undecided	31
2	Undecided Professional	14
3	Athletic Training	8
4	Management	8
5	Computer Science	7

Number of International Undergraduate Students Fall 2007

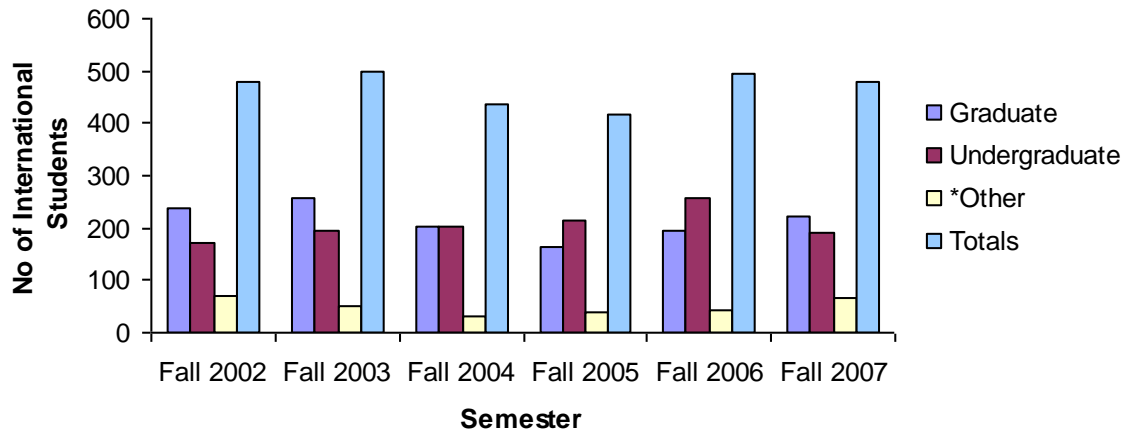


2.7 International Students statistics from Fall 2002 through Fall 2007

Semester	Graduate	Undergraduate	*Other	Totals
Fall 2002	238	173	69	480
Fall 2003	257	193	49	499
Fall 2004	202	202	33	437
Fall 2005	163	214	39	416
Fall 2006	193	257	43	493
Fall 2007	221	190	67	478

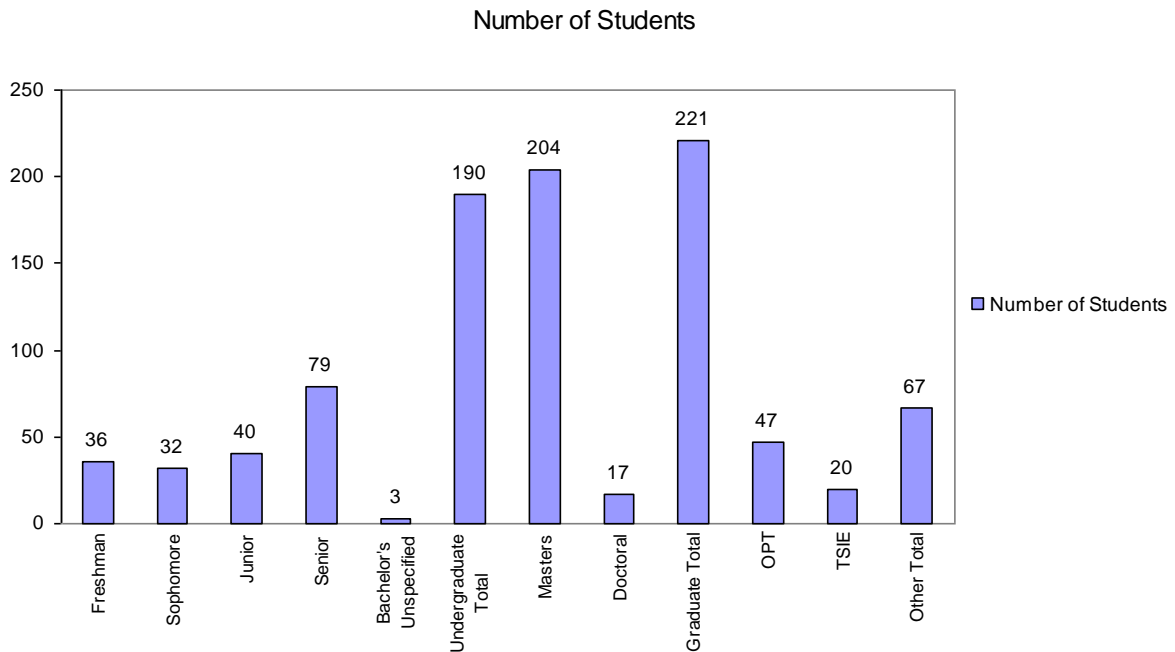
*Others include Post Graduate and Intensive English students. Fall 2007 also includes OPT students.

International Students statistics from Fall 2002 through Fall 2007



* Years 2002 – 2006 do not include OPT students in the total statistics.

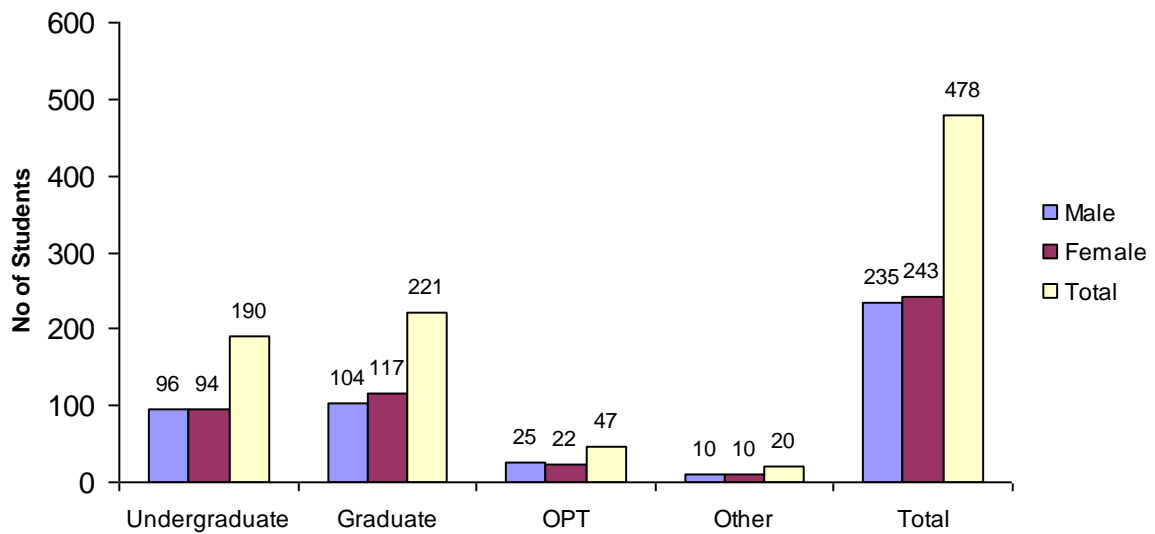
2.8 International Students statistics based on Academic Classification - Fall 2007



International Students Academic Classification	
Bachelors	
	Number of students
Freshman	36
Sophomore	32
Junior	40
Senior	79
Bachelors Unspecified	3
Undergraduate Total	190
Graduate	
	Number of students
Masters	204
Doctoral	17
Graduate Total	221
Other	
	Number of students
OPT	47
Intensive English	20
Others Total	67

2.9 International Students Gender Breakdown - Fall 2007

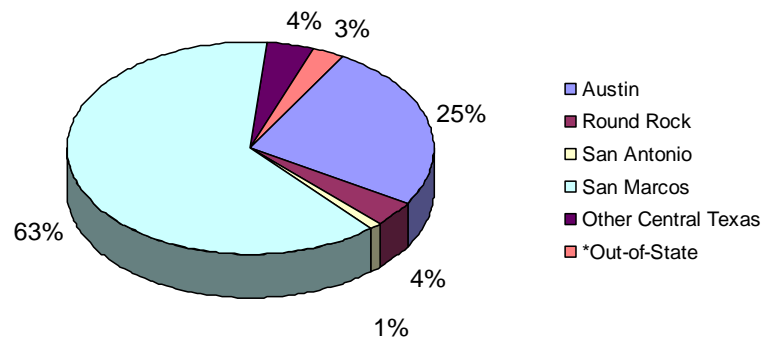
International Students Gender Breakdown - Fall 2007



*Others include Post Graduate and Intensive English students.

International Student Gender Breakdown – Fall 2006					
Gender	Undergraduate	Graduate	OPT	Other	Total
Male	96	104	25	10	235
Female	94	117	22	10	243
Total	190	221	47	20	478

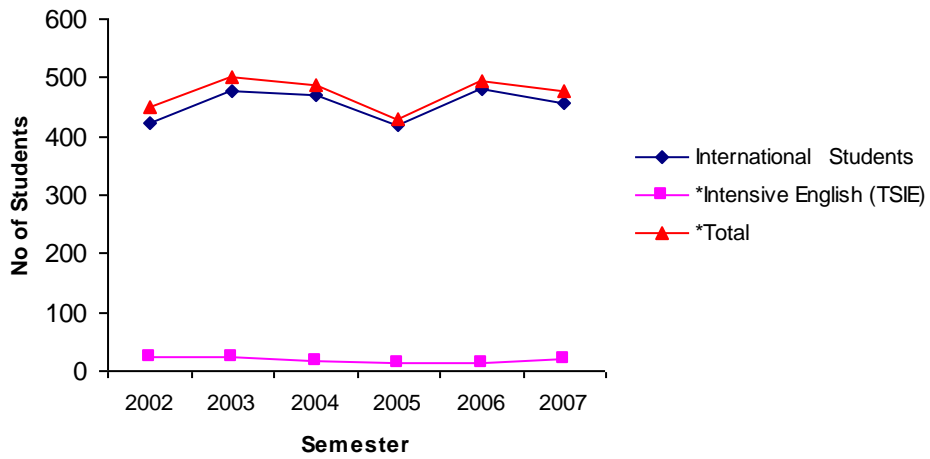
2.10 International Students Residence Statistics - Fall 2007



Residence City	Number of Students
Austin	121
Round Rock	18
San Antonio	6
San Marcos	300
Other Central Texas	20
*Out of States	13
Total	478
* Includes students in practical Training and National exchange programs	

2.11 Texas State International Student Trends: 2002 – 2007

Texas State International Student Trends: 2002 – 2007



Fall	International Students	*Intensive English (TSIE)	*Total	Comparison [%]
2002	424	25	449	
2003	477	24	501	+52[11.58%]
2004	469	17	486	-15[-2.99%]
2005	418	12	430	-56[-11.52%]
2006	481	12	493	+63[14.65%]
2007	458	20	478	-15[-1.01%]

Totals for Intensive English vary between the first and second halves of each semester. Therefore, these numbers will vary depending on when data were obtained

*Years from 2002 – 2006 do not include OPT.