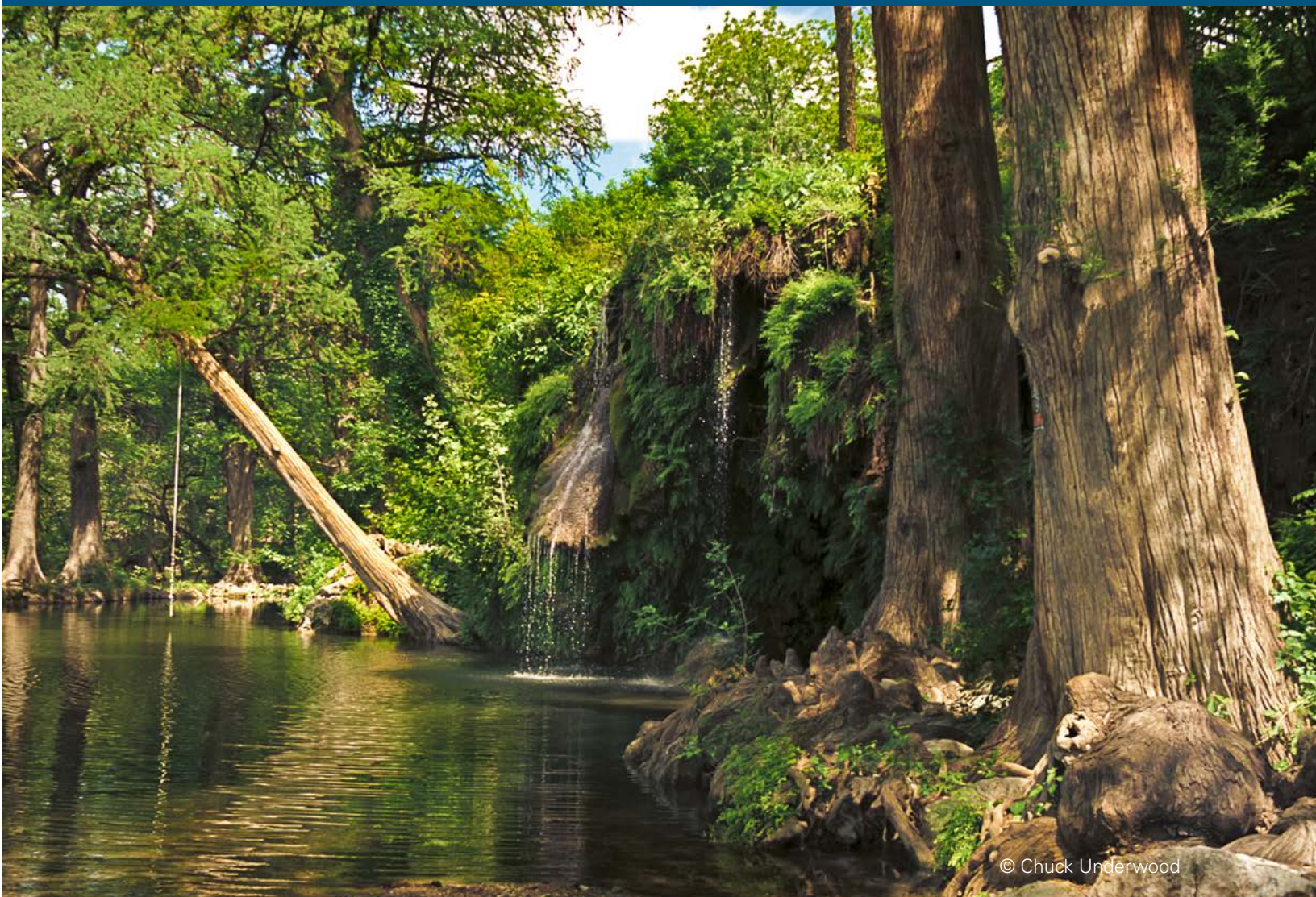


Krause Springs Occurrence of Flowing Water, Burnet County, Texas

Report: 2021-02
January 2021



© Chuck Underwood



THE MEADOWS CENTER
FOR WATER AND THE ENVIRONMENT

TEXAS STATE UNIVERSITY

Authors:

Douglas A. Wierman, P.G.
Jenna Walker, M.A. Geo.
Sandra Arismendez, Ph.D.
Allyson Schlandt, B.S.
Aspen Navarro, MS
Daniel Vasquez

MEMBER THE TEXAS STATE UNIVERSITY SYSTEM

Acknowledgments

The Meadows Center for Water and the Environment would like to thank Central Texas Groundwater Conservation District for providing funding for the project.

We also thank Brian Hunt of the Bureau of Economic Geology at the University of Texas for providing comments on the report.

We especially thank all of the landowners that allowed us to enter their property. Without cooperation of private landowners, opportunities for us to expand our knowledge of the river would not be possible.



Douglas A. Wierman , PG #4062

Blue Creek Consulting LLC

Texas Geosciences Firm #50541

Mr. Wierman was the lead researcher for the project.

Krause Springs Occurrence of Flowing Water, Burnet County, Texas

Authors:

Douglas A. Wierman, P.G., Researcher

Jenna Walker, M.A.Geo., Researcher

Sandra Arismendez, Ph.D., Researcher

Allyson Schlandt, B.S., Researcher

Aspen Navarro, MS, Contributor

Daniel Vasquez, Student Contributor

The Meadows Center for Water and the Environment - Texas State University

January 2021

Report: 2021-02



**THE MEADOWS CENTER
FOR WATER AND THE ENVIRONMENT**

TEXAS STATE UNIVERSITY

601 University Drive, San Marcos Texas 78666

512.245.9200 | MeadowsCenter@txstate.edu | www.MeadowsWater.org

MEMBER **THE TEXAS STATE UNIVERSITY SYSTEM**



© Jenna Walker - Little Cypress Creek

CONTENTS

Executive Summary	9
Introduction	10
Scope of Study	11
Methods and Data.....	11
Water Chemistry Mapping and Analysis.....	12
Discharge Measurements.....	12
Land Cover Analysis.....	12
Setting and Watershed Summary	13
Land Cover	14
Climatic Conditions	17
Study Results	18
Geology of the Little Cypress Creek Basin.....	18
Well Yields.....	29
Groundwater Resources.....	30
Groundwater Level Monitoring.....	30
Surface Water/Groundwater Interactions.....	32
Flow Discharge Measurements.....	33
Water Quality.....	38
Surface and Groundwater Quality.....	38
Water Budget.....	41
Discussion	42
Conclusions	43
Next Steps	43
References	44
Appendix A: Land Cover Descriptions	45
Appendix B: State Well Reports	46
Appendix C: Water Quality Data	102
Appendix D: Map Credits	105

LIST OF FIGURES

Figure 1	Little Cypress Creek	13
Figure 2	NLCD Land Cover – 2001	14
Figure 3	NLCD Land Cover - 2016	15
Figure 4	Land Cover - 2016	16
Figure 5	Land Cover Change 2001 - 2016	16
Figure 6	Geologic Map of the Little Cypress Creek Watershed (after Barnes, 1982)	18
Figure 7	Stratigraphic Column of the Little Cypress Watershed (after Barnes, 1982)	19
Figure 8	Location map of wells with TWDB State Well Reports (base map after Barnes, 1982)	19
Figure 9	Southeast dipping Marble Falls Limestone (Cmf)	20
Figure 10	Photograph of disarticulated crinoid columnals (up to 1/2" diameter) of the Marble Falls Limestone (Cmf)	20
Figure 11	Geologic Cross Section (from Hunt et al., 2020)	21
Figure 12	Fractured Marble Falls Limestone (Cmf) upstream of Krause Springs Park	21
Figure 13a	Core showing the Sycamore Sand in the shallow subsurface at CTGCD MW1	22
Figure 13b	Outcrop of the Sycamore Sand (Ksy) conglomerate	22
Figure 14	Inferred Occurrence of Sycamore Sand. Hatched area represents the inferred extend of sand and gravel of the Sycamore Sand based upon outcrops and subsurface well data. Base map after Barnes, 1982.	23
Figure 15	Occurrence of Water Bearing Sand/Gravel	23
Figure 16	Schematic Geologic Cross Section of Sycamore Sand (Ksy) and gravel unit.	24
Figure 17	Travertine Deposit formed by flowing spring flow with Marble Falls Limestone (Cmf) in foreground.	26
Figure 18	Sycamore sand (Ksy) facies encountered at MW1 at 20' bgs. (photo: Paul Babb)	27
Figure 19	Core of the Smithwick Shale (Csw) at MW1. Photo from (Hunt et al, 2020).	27
Figure 20	Well yields obtained from TWDB State Well Reports	28
Figure 21	Surface and Groundwater Sampling Locations	30
Figure 22	Potentiometric surface map	30
Figure 23	CTGCD MW1 transducer water level data	31
Figure 24	Bradfield Spring originating from base of a cliff of the Marble Falls Limestone (Cmf)	32
Figure 25	Generalized "High Flow" Gaining and Losing Reaches of Little Cypress Creek	35
Figure 26	Generalized "Low Flow" Gaining and Losing Reaches of Little Cypress Creek	35
Figure 27	Streamflow Discharge Monitoring Results	36
Figure 28	Monitoring site LCC7	36
Figure 29	Little Cypress Creek near Bradfield Spring. Note main channel is dry with all flow originating from spring.	37
Figure 30	Sample Piper Plot	39
Figure 31	Piper Plot of July 2020 water quality data	40
Figure 32	Stable Water Isotopes Preliminary Water Budget Analysis	41

LIST OF TABLES

Table 1	Land Cover Changes 2001 - 2016	16
Table 2	Precipitation Data, 2020	17
Table 3	Inventory of TWDB Wells	26
Table 4	Groundwater Level Data	29
Table 5	Summary of Stream Discharge Monitoring - Little Cypress Creek	33
Table 6	Water Quality Sampling Results	38
Table 7	Carbon 14 and Tritium Sampling Results (*units - 0/00)	40

LIST OF ACRONYMS

cfs: cubic feet per second

CTGCD: Central Texas Groundwater Conservation District

LCRA: Lower Colorado River Authority

MRLC: Multi-Resolution Land Characteristics

GIS: Geographic Information Systems

TWDB: Texas Water Development Board

MCWE: Meadows Center for Water and the Environment

NELAP: National Environmental Laboratory Accreditation Program

SWR: State Well Report

GPM: Gallons Per Minute

LCC: Little Cypress Creek

EPA: Environmental Protection Agency

EARDC: Edwards Aquifer Research Data Center

TU: Tritium Units

MW: Monitoring Well

BGS: Below Ground Surface



© Jenna Walker - Little Cypress Creek

EXECUTIVE SUMMARY

Little Cypress Creek and Krause Springs are at a cross-roads as rapid growth in the Austin region intersect a fragile groundwater-fed ecosystem. The combined effects of increased groundwater pumping, extended droughts, and climate change influences recharge and springflow from the aquifers and springs of the area. Furthermore, land fragmentation within the larger Colorado watershed is already evident, altering the habitat and land management activities. However, the source of water to Krause Springs is poorly understood, and without that knowledge, what will the future hold for this remarkable Hill Country jewel?

This study represents an opportunity to better understand our creeks and rivers and how they interact with the local aquifers. Improved understanding of these groundwater and surface water systems can lead to new development practices and land management strategies that can change the way we use water while sustaining the economic vitality of the region. The challenge is understanding and communicating potential water crisis, its cost, and strategies of efficient management and conservation measures that are recognized and accepted by the Hill Country's residents and visitors.

The Meadows Center for Water and the Environment's "How Much Water is in the Hill Country?" research (2015-2019) series focused on the surface and groundwater resources of the Pedernales and Guadalupe Rivers and the threats to their continued sustainability by examining water quality and flows across the watershed. These studies have helped us to better define the primary water sources and potential management and conservation activities that would protect and enhance the river flow and quality. Additional similar studies are essential in a more in-depth understanding of the health of the Hill Country watersheds.

The primary question for this study is, what is the source of water for Krause Springs? Based on the data collected during this study, in addition to work previously performed by others, it appears the basal sands and gravels of the Cretaceous Sycamore Sand Formation (Ksy) provide the majority of the source water to Krause Springs and support base flow in Camp Creek a tributary of Little Cypress Creek. The Sycamore Sand is also known as the Lower Trinity Aquifer. Accordingly, recharge to the Lower Trinity, and pumping within the springshed directly influences Krause Springs. The Sycamore Sand overlays the Pennsylvannian Marble Falls Limestone (Cmf), which may also provide additional water to the Lower Trinity and springs, or simply may act as a local conduit from the Sycamore (Ksy) and alluvium (Qal) to the creek. Alluvial deposits in Little Cypress Creek to the southwest of the park area may also be hydraulically connected to the Sycamore Sand (Ksy).

This provides critical data regarding the hydrogeology of Krause Springs and a portion of Little Cypress Creek. However, to fully characterize the system additional hydrogeologic studies could be performed on the broader watershed. Suggested next steps include: 1) Geologic characterization including geologic mapping, additional borings including cuttings and core, and geophysical logging coupled with the collection of cuttings in area wells. 2) Hydrogeologic characterization including: monitor wells (automated recorders) in various aquifer units, weather stations, and multiple surface flow gauges, surface geophysical surveys, targeted dye tracing along losing (recharge) reaches of the creek, additional synoptic water level, and streamflow (gain-loss) data, and geochemistry.

Combined, these data should further delineate the source water or springshed area. Ultimately, all this information could culminate in the development of a conceptual and numerical groundwater flow model.



INTRODUCTION

The Hill Country is a unique region of Texas where rivers and springs rise out of a complex system of multiple and overlapping aquifer systems. Over the past several years, the Meadows Center for Water and the Environment has been working to answer the question – How much water is in the Hill Country? Although this seems like a straightforward question that merits a straightforward answer, the reality is that the largely hidden and unknown complexities of Hill Country hydrogeology make it challenging to answer.

The Meadows Center teamed up with the Central Texas Groundwater Conservation District (CTGCD) to direct this question towards Little Cypress Creek, Krause Springs, and the surrounding aquifers, a small but significant tributary of the Colorado River that flows into Lake Travis. Multiple aquifers contribute to base flow in Little Cypress Creek, but there is a lack of research and awareness about the contributing and recharge zones within the system.

The Little Cypress Creek watershed is currently made up of mostly undeveloped land use with steady spring flows and good water quality. The goal of this study is to collect data to characterize these types of natural systems and the interconnectedness between surface and groundwater. Such data are important for water planning, policy, and the health of Hill Country springs, streams, and rivers.

The focus of this study performed by the Meadows Center and CTGCD was on the stream gains and losses and a synoptic groundwater (water level) map focused around Krause Springs. The data allows for a better understanding of Little Cypress Creek's flow moving downstream and where there are gaining and losing reaches where surface water recharges the underlying aquifers. The results of this research contribute valuable insight towards strategic conservation prioritization and sustainable water resource management.



© snatalia - Krause Springs

SCOPE OF STUDY

The study area included Little Cypress Creek north of Highway 71 to the confluence with Lake Travis. The study consisted of several primary efforts: a literature review, preliminary data analysis of well logs and water quality, GIS data collection and mapping, water quality sampling and laboratory analysis, a synoptic groundwater level and streamflow gain and loss event, and interpretation of the data in this report.

METHODS AND DATA

Mapping and Database

GIS is a versatile tool that can be used for a variety of functions, including mapping physical and hydrological features of a certain area, housing and centralizing multiple forms of environmental data, and performing spatial and data analysis using various tools offered within the program. The study used the ESRI suite of GIS products, specifically ArcGIS Pro. Land cover data was collected and analyzed for patterns using National Land Cover Database (NLCD) raster files, along with shapefiles of watershed and subwatershed boundaries, tributaries and flowlines from the National Hydrological Database (NHD). A composite geologic map of the watershed created from Bureau of Economic Geology at the University of Texas at Austin geologic quadrangle maps was added for analysis of geology. Groundwater quality data was extracted from the Texas Water Development Board online database and sorted by aquifer in addition to the water quality samples collected and analyzed by Meadows Center staff and partner laboratories.

Subsurface Data

The primary area of interest for this study is the area around Krause Springs in the eastern part of the watershed near the confluence of Little Cypress Creek and Lake Travis. Driller's logs were retrieved from the Texas Water Development Board (TWDB) website to gain insight into area-specific subsurface hydrogeology. There are a limited number of wells as not all logs were submitted to the state prior to 2002. In addition, individual drillers record subsurface conditions differently and sometimes inaccurately. In some cases, location coordinates on the logs were corrected. The TWDB database extents back to 2002, therefore no wells drilled before 2002 are included. There are few driller's logs in the area with uneven distribution and very sparse in the area immediately south of the park. Even though there are limitations, there is data that can be interpreted from the logs. The wells with available logs from the TWDB are plotted on Figure 8 along with their State Well Report (SWR) number. The SWRs are included in Appendix B.

An electrical and electromagnetic geophysical survey was performed by Ikard (2019) at the Krause springs park. The results indicated there may be a deeper vertical flow path, potentially along a fault, supporting the springs. An apparent shallow flow path following the topographic gradient may also support the flow at the springs.

WATER CHEMISTRY MAPPING AND ANALYSIS

Chemical analysis of surface water and groundwater is used to evaluate water quality, examine human impacts, and understand water pathways of groundwater to the surface and vice versa. Major ion chemistry is a standard tool used to decipher hydrogeochemical patterns as well as impacts of human activity (Dunne and Leopold, 1978). Spatial patterns in water chemistry were evaluated as related to both man-made and natural sources by utilizing spatial analysis in ArcGIS. The field data points provide spatial locations for the water samples. Surface and groundwater samples were collected by Meadows Center team and were analyzed for naturally occurring cations and anions by the Edwards Aquifer Research Data Center (EARDC) Laboratory at Texas State University. Existing water chemistry, including isotopes, data from Texas Water Development Board (TWDB) were also evaluated.

DISCHARGE MEASUREMENTS

To determine losing and gain reaches of the creek, four synoptic discharge measurement events were performed. Based on available landowner access, measurements were made at semi-regular intervals along the length of the creek with "live" water. Flow measurements were made using a FlowTracker (FT2) handheld Acoustic Doppler Velocimeter® generally following USGS protocols. River miles from the confluence of Little Cypress Creek and Lake Travis were determined using GIS techniques. Due to low flows during the synoptic gauging events, discharge values are expressed as gallons per minute (gpm) as opposed to cfs (1 cfs= approximately 449 gpm).

LAND COVER ANALYSIS

Land cover, particularly developed land use containing impervious cover, septic systems, sewage treatment, and nonpoint source pollution plays a role in determining water quality, and both storm and base flow. GIS files of basin land cover data from 2001 and 2016 were obtained from the National Land Cover Database (NLCD) provided by the Multi-Resolution Land Characteristics (MRLC) Consortium (MRLC 2011). Although the data sets contained a detailed breakdown of many land cover types, many similar land uses were combined for the purpose of this report and consolidated into six categories. As stated in the Regional Water Quality Plan (2005), "various published and unpublished reports and in unpublished data compilations, the City of Austin has indicated that physical and biological degradation of streams begins to occur at between five and eighteen percent (5-18 percent) impervious cover". Analysis of several water chemistry parameters could indicate water chemistry is primarily influenced by geology and land cover.

SETTING AND WATERSHED SUMMARY

The Little Cypress Creek watershed, a tributary to the Colorado River basin, is located in Burnet County, approximately 30 miles west the City of Austin and 14 miles southeast of the City of Marble Falls, TX. US Hwy 71 traverses the watershed from southeast to northwest. The watershed covers an area of 13.55 square miles (8,673 acres). The creek is approximately 8 miles in length and originates in the western part of the watershed, before coming to a confluence with Lake Travis.

Large ranches occupy most of the watershed. Other land uses include pastureland, vineyards, single family residences and some commercial development along Hwy 71 at CR 191 and CR 413 in the town of Spicewood (LCRA, 2008).

Krause Springs, a major tourist attraction in Burnet County, TX, is located on a 150-acre piece of property owned by the Krause family for over 50 years (Brune, 1981). This property contains as many as 32 springs, as well as a man-made swimming pool and 25 acres of campground. Located near the town of Spicewood, Texas, Krause Springs is listed on the National Registry of Historical Sites and has served as a recreational destination for central Texas residents since its founding in 1955 (Krause Springs, 2020).

The surrounding land cover of Krause Springs is primarily undeveloped (National Land Cover Database, 2011). The 115-acre property containing Krause Springs has sparse recreational development, including campsites, a man-made swimming pool, parking lots, and a few small structures (Krause Springs, 2020). Under a mile away from Krause Springs is the town of Spicewood (population 7,666), containing development that ranges from rural to low-density urban (U.S. Census Staff, 2011) (National Land Cover Database, 2011). Aside from sparse areas of moderate development, the land surrounding Krause Springs is primarily dominated by scrublands, grasslands, and small concentrations of deciduous and evergreen forest (National Land Cover Database, 2011).

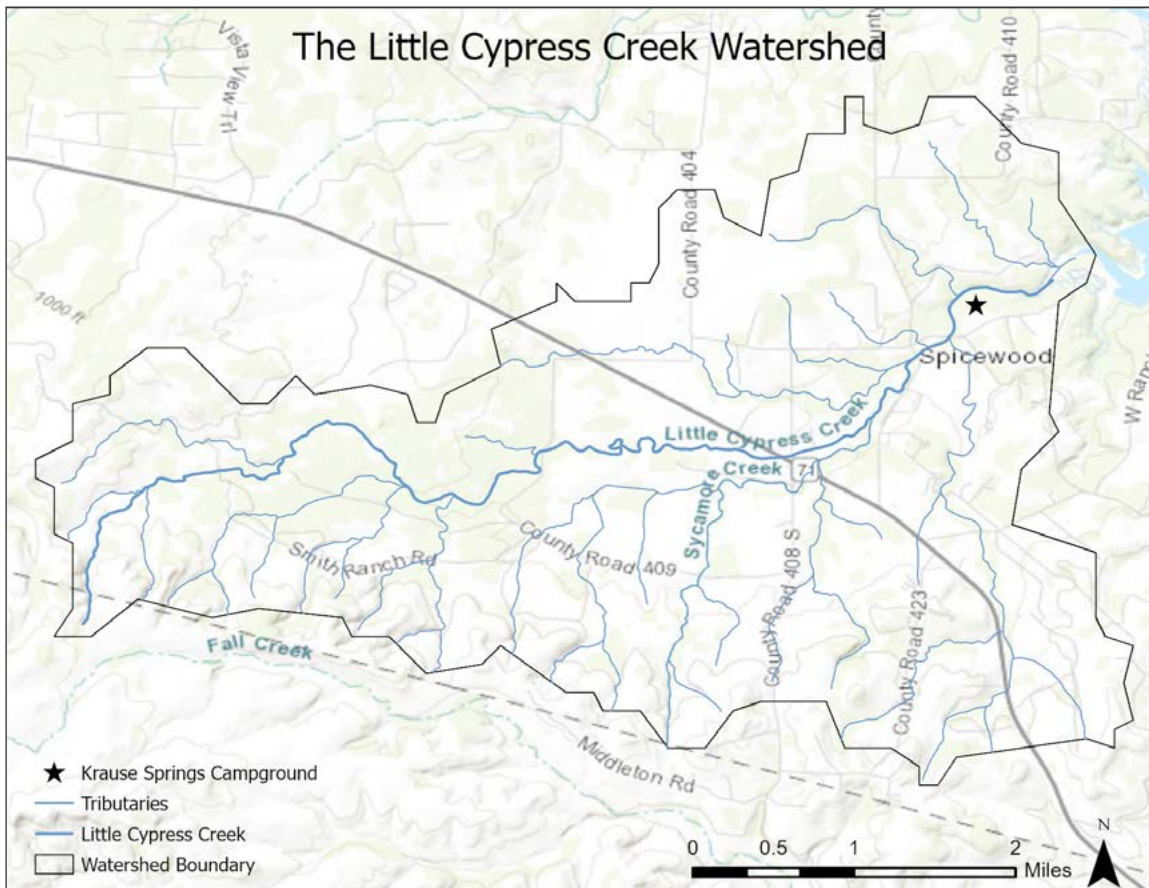


Figure 1. Little Cypress Creek

LAND COVER

GIS files of basin land cover data from 2001 and 2016 were obtained from the National Land Cover Database (NLCD) provided by the Multi-Resolution Land Characteristics (MRLC) Consortium (MRLC 2016). NLCD is updated every five years. The surrounding land cover of Krause Springs is primarily undeveloped (National Land Cover Database, 2011). The 115-acre property containing Krause Springs has sparse recreational development, including campsites, a man-made swimming pool, parking lots, and a few small structures (Krause Springs, 2020). Under a mile away from Krause Springs is the town of Spicewood (population 7,666), containing development that ranges from rural to low-density urban (U.S. Census Staff, 2011) (National Land Cover Database, 2011). Aside from sparse areas of moderate development, the land surrounding Krause Springs is primarily dominated by scrublands, grasslands, and small concentrations of deciduous and evergreen forest (National Land Cover Database, 2011). Figures 2 and 3 indicate 2001 and 2016 land cover of the Cypress creek watershed.

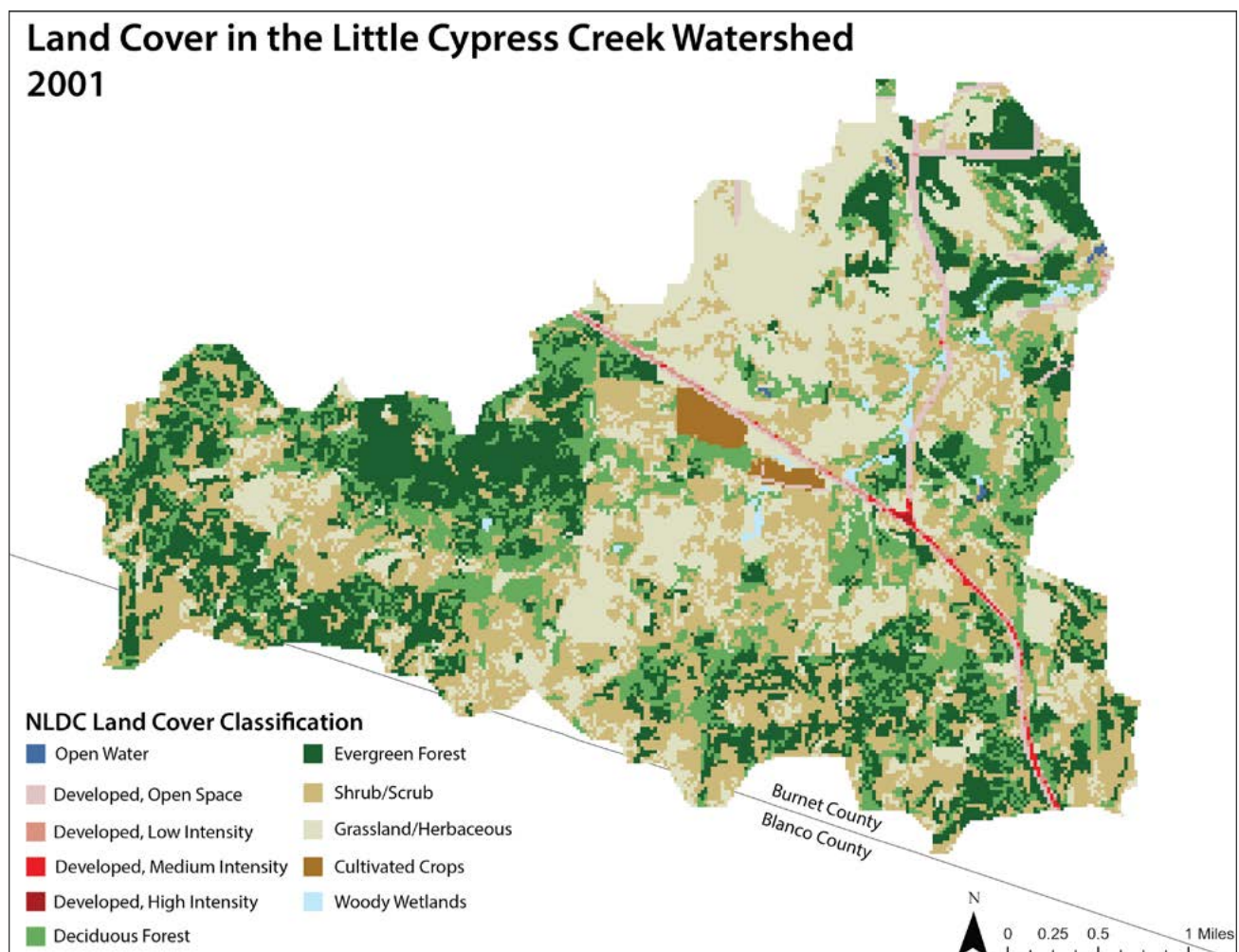


Figure 2. NLCD Land Cover – 2001

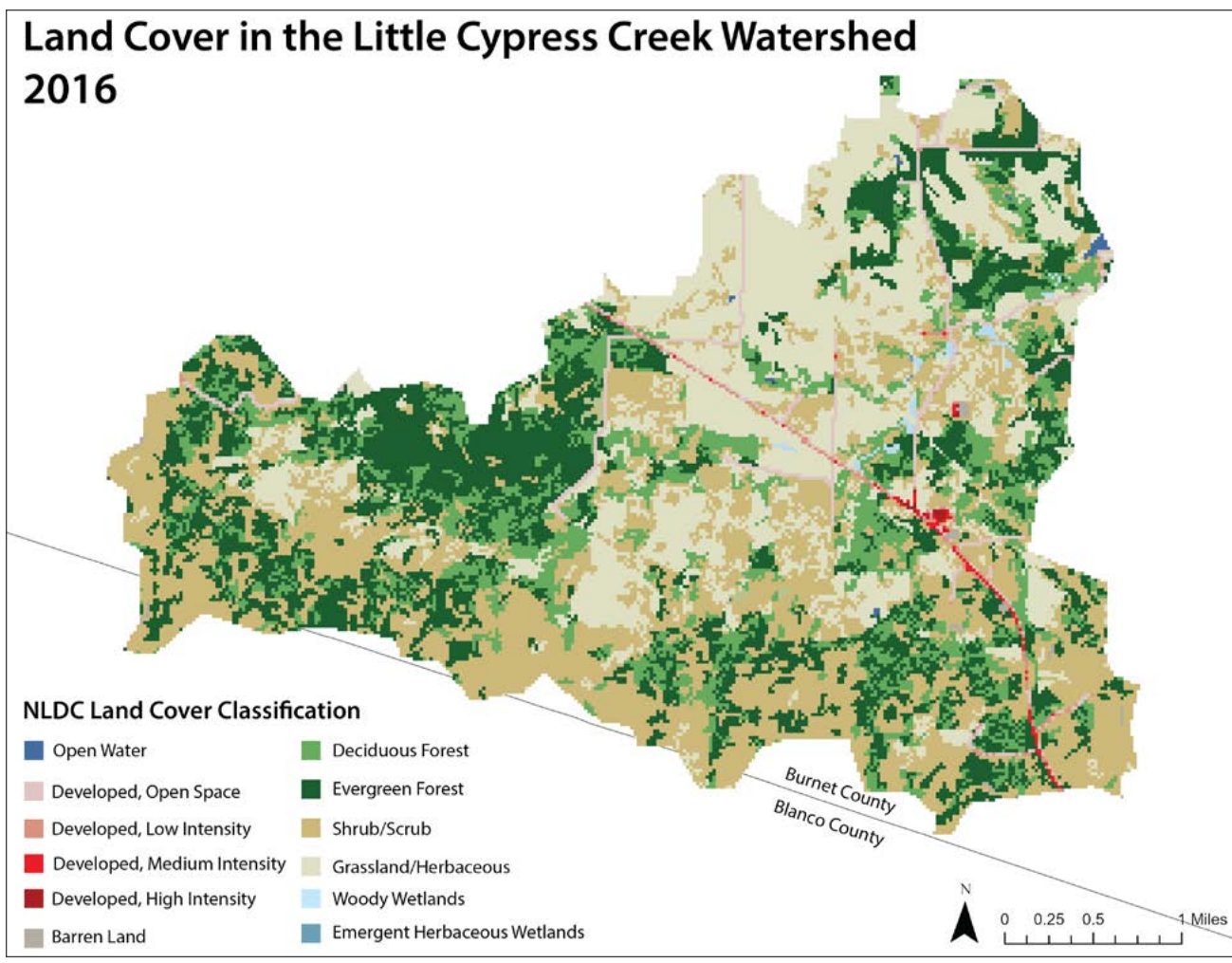


Figure 3. NLCD Land Cover – 2016

The land cover data sets from 2001 and 2016 were compared to determine land cover changes over the fifteen-year period. Although the data sets contained a detailed breakdown of many land cover types, similar land uses were combined for the purpose of this report and consolidated into a few categories to analyze land use changes. The watershed was primarily deciduous forest, evergreen forest, shrub/scrub, grasslands and developed in 2001. Table 1 includes a listing of land cover types with a detailed description of each type contained in Appendix A.

In general, there were small changes in land use types between 2001 and 2016. While the six major land cover types still dominate the watershed in 2016, there was a decline in deciduous forest and grasslands, totaling approximately 323 acres. Shrub and scrub areas increased by 349 acres (Table 1). All of the cultivated land along Hwy 71 has been replaced by grasslands. In total, there have been land cover changes of approximately 10% between 2001 and 2016.

Table 1. Land Use Change 2001 – 2016

Land Cover Type	2001 Land Cover (acres)	2016 Land Cover (acres)	Change in Land Cover (acres)
Open Water	7	10	3
Developed, Open Space	175	185	10
Developed, Low Intensity	41	49	8
Developed, Med. Intensity	20	22	2
Developed, High Intensity	2	6	4
Barren Land	0	16	16
Decid. Forest	1549	1308	-241
Evergreen Forest	2002	2028	26
Mixed Forest	0	28	28
Shrub/Scrub	2507	2825	318
Grassland/Herbaceous	2285	2220	-65
Cultivated Crops	79	0	-79
Woody Wetlands	57	28	-29
Emergent Herbaceous Wetlands	0	1	1

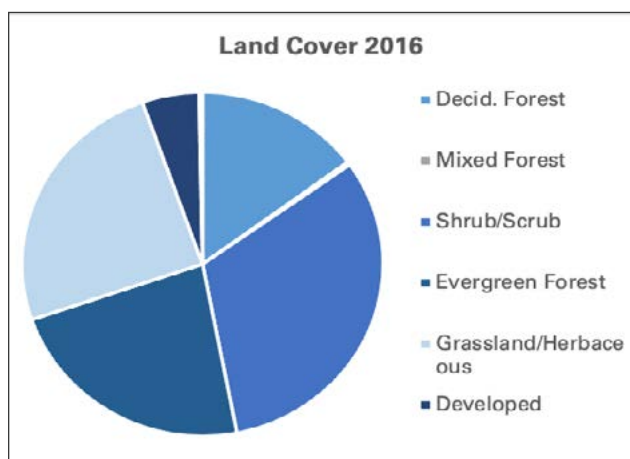


Figure 4. Land Cover - 2016

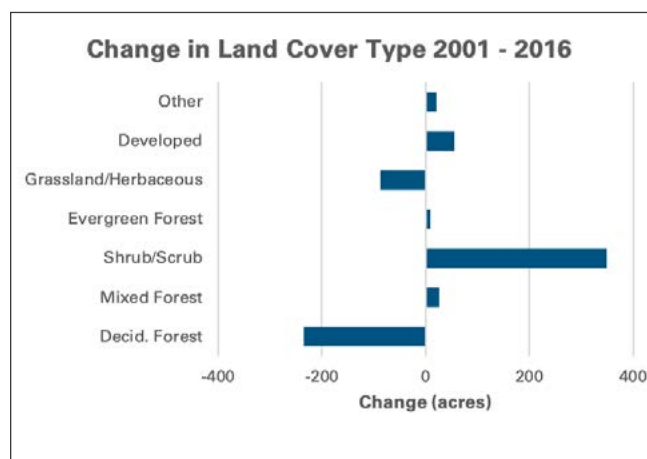


Figure 5. Land Cover Change 2001 - 2016

CLIMATIC CONDITIONS

Precipitation during the 2020 study period was variable. Monthly precipitation for 2020 is shown on Table 2. Precipitation was above average (wet conditions) during the first three months of the year, whereas below average (-3.8") for the last six months of the year (dry conditions).

Table 2: Precipitation Data, 2020

PRECIPITATION DATA* -2020			
Month	Actual	30 Year Average	Departure From Average
January	1.97	1.75	0.22
February	2.29	2.02	0.27
March	4.01	2.76	1.25
April	2.88	2.09	0.79
May	4.44	7.48	-3.04
June	4.33	2.67	1.66
July	0.63	1.88	-1.25
August	1.25	2.035	-0.785
September	5.96	2.99	2.97
October	0.35	3.88	-3.53
November	0.73	2.96	-2.23
December	4.07	2.4	1.67
Total	32.91	34.92	-2.005

*Data from Austin Camp Mabry station.

Source: <https://w2.weather.gov/climate/index.php?wfo=ewx>

STUDY RESULTS

GEOLOGY OF THE LITTLE CYPRESS CREEK BASIN

There are several sources of geologic mapping data which include all or parts of the Little Cypress Creek Watershed. Primary sources used in this study include:

- Geology of the Spicewood Quadrangle by V. Barnes (Barnes, 1984),
- Geologic Map of the Upper Lake Travis Area by C. Woodruff and E. Collins (Woodruff and Collins, 2016), and
- Hydrogeologic Atlas of Southwest Travis County by B. Hunt and others (Hunt et al., 2020).

Complete citations are included in the reference section of this report.

The surficial geologic units of the Little Cypress Creek watershed range in age from Ordovician to Quaternary, though most of the watershed is dominated by Lower Cretaceous strata. There is a complex of strata of in the western part of the watershed consisting of Ordovician, Mississippian, and Pennsylvanian formations, though this area is not the prime area of interest for this study. Individual units in this area include the Honeycutt formation (Oh) of the Ellenberger group, Barnett Shale (Cb)(Mississippian), and the Pennsylvanian Marble falls Limestone (Cmf) (Figure 6).

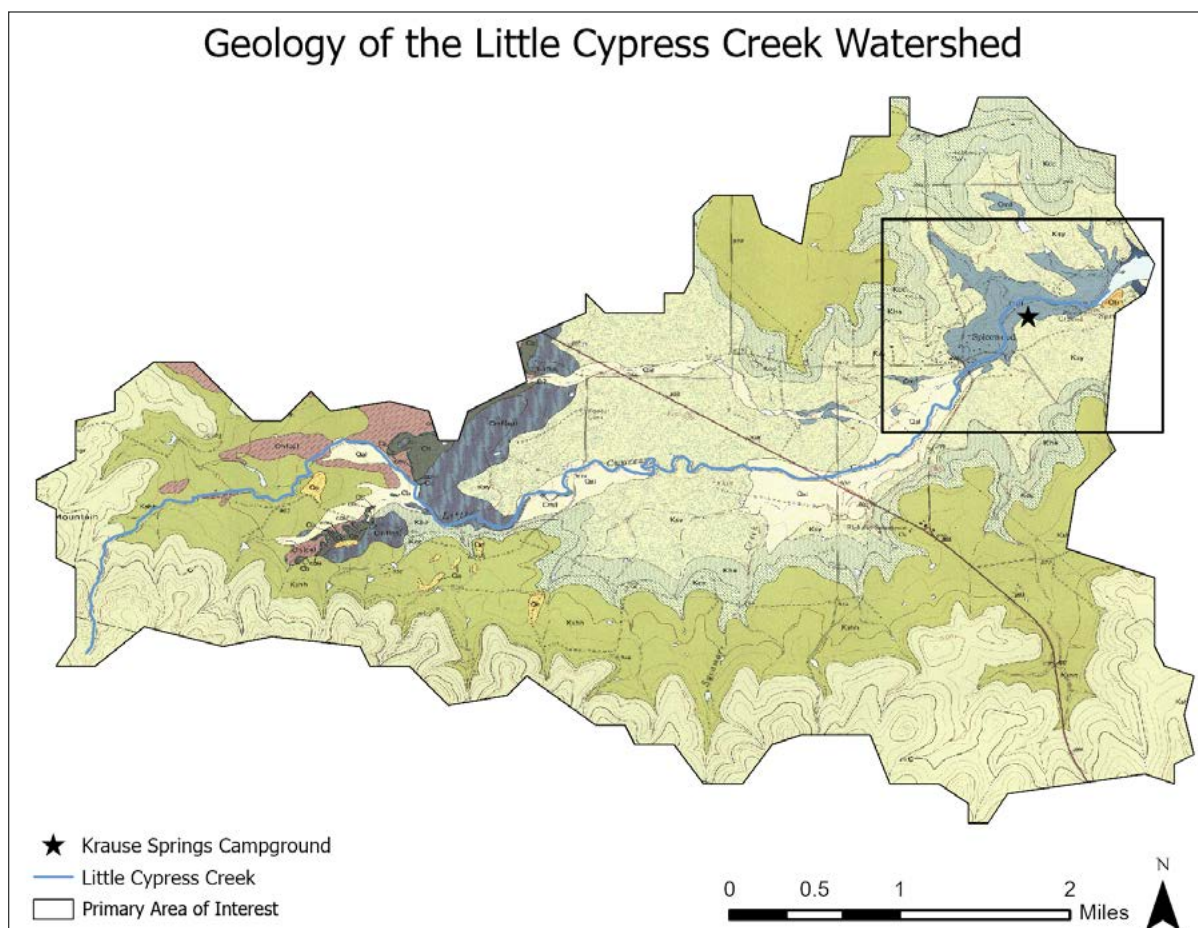


Figure 6. Geologic Map of the Little Cypress Creek Watershed (after Barnes, 1982)

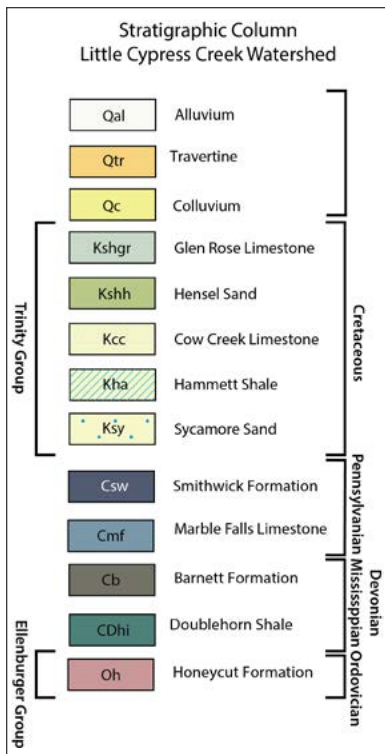


Figure 7. Stratigraphic Column of the Little Cypress Watershed (after Barnes, 1984)

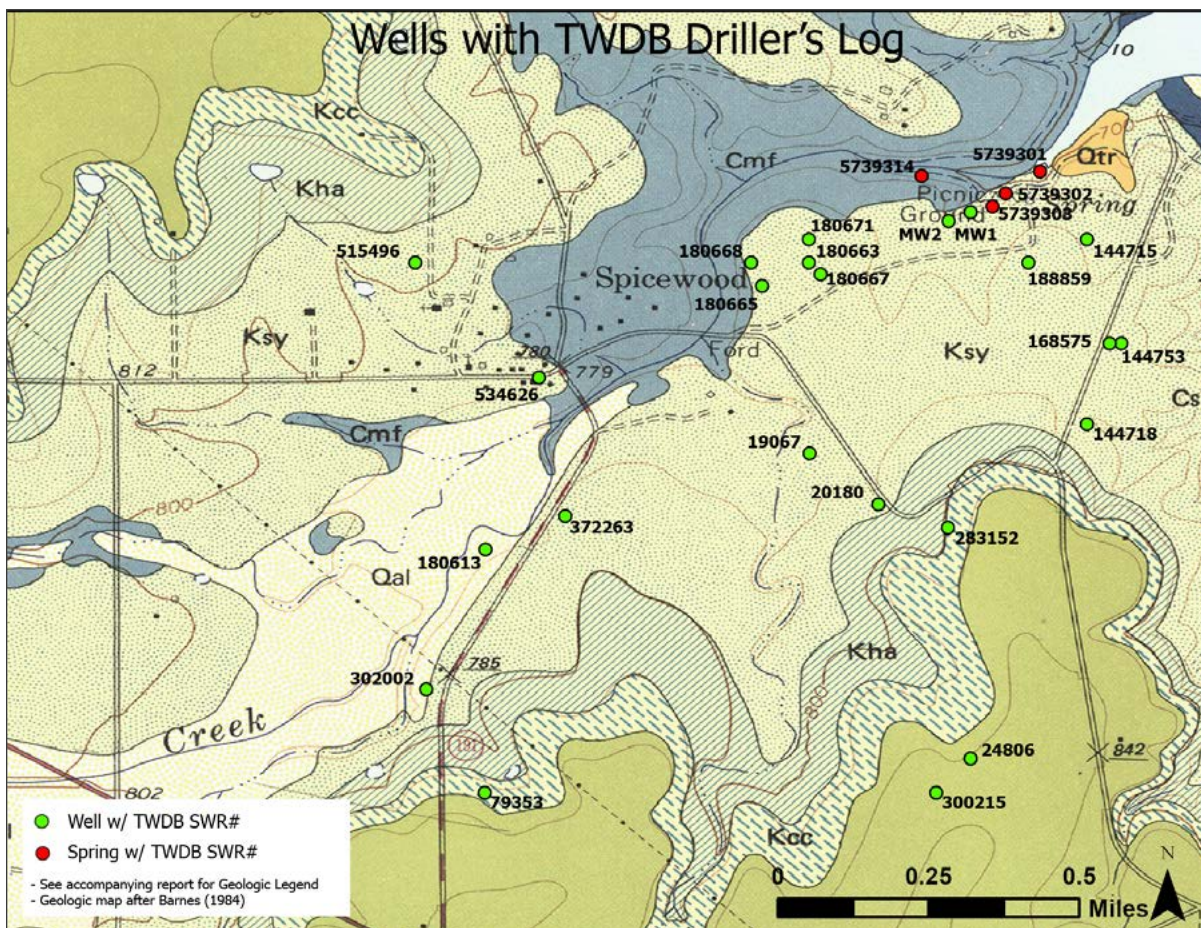


Figure 8. Location map of wells with TWDB State Well Reports (base map after Barnes, 1982)

The surficial geology is primarily Pennsylvanian and Cretaceous strata. The Pennsylvanian Marble Falls Formation (Cmf) is a limestone that primarily crops out along the north side of the creek starting at TX Hwy 191 and extends to the confluence with Lake Travis. It is also found on the southside of the creek just upstream of the park. The formation dips to the southeast (Figure 9) and is primarily characterized by disarticulated crinoid columnals (Figure 10). To the south of the creek, the Marble Falls is overlain by the Pennsylvanian Smithwick Formation (Csw). Hunt (2020) inferred a southwest - northeast trending fault along the southside of the creek that brought the Marble Falls (Cmf) to be juxtaposed alongside the Smithwick (Csw) (Figure 11). The Marble Falls (Cmf) is highly fractured just upstream of the park on the south side of the creek (Figure 12).

The Smithwick Shale (Csw) overlies the Marble Falls (Cmf) in the subsurface in the park area (Figure 11) and crops out along the shore of Lake Travis to the east (LCRA Grelle Recreation Area). A sandy facies of the Smithwick (Csw) was identified in this area (Brian Hunt personal communication, 2020).



Figure 9. Southeast dipping Marble Falls Limestone (Cmf)



Figure 10. Photograph of disarticulated crinoid columnals (up to 1/2" diameter) of the Marble Falls Limestone (Cmf)

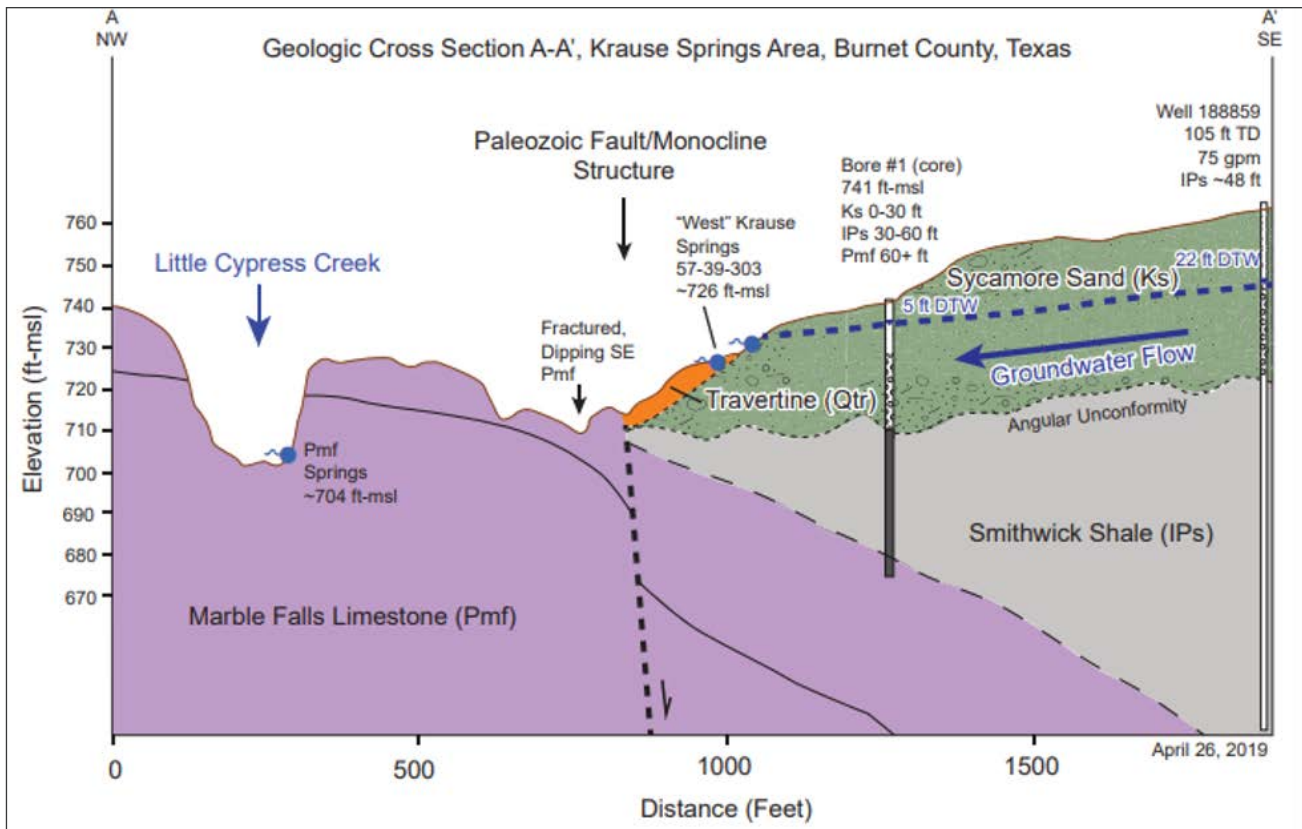


Figure 11. Geologic Cross Section (from Hunt et al., 2020)



Figure 12. Fractured Marble Falls Limestone (Cmf) upstream of Krause Springs Park

Unconformably overlying the Smithwick (Csw) and Marble Falls (IPmf) in the study area is the Cretaceous Trinity Group. Near the Krause Park, the Sycamore Sand (Ksy) is the surficial unit. The Sycamore (Ksy) may be in contact with the Marble Falls (Cmf) just west of the park picnic grounds due to the aforementioned fault. The Sycamore (Ksy) is of variable lithology, though commonly expressed as a well cemented, poorly sorted, pebble to boulder sized conglomerate (Figures 13a and 13b) composed of Paleozoic and Precambrian rocks (Barnes, 1982). Woodruff (2016) describes the Sycamore (Ksy) as “mostly conglomerate, local sand lenses deposited on underlying Paleozoic terrain: up to 50 feet thick”. Based on a review of local driller’s logs, it appears there is an unconsolidated water bearing sand and gravel component to the Sycamore (Ksy), likely similar to the sand lenses mentioned by Woodruff (2016). The occurrence of sand and gravel from drillers well logs showing the top elevation and thickness is shown on Figure 14 and Figure 15 is an isopach map of the unit. The top of the unit ranges in elevation from 752 feet above msl at Krause Springs Park, to 779 feet above msl to the southwest. Thus, the structural dip of the top of the Ksy from the Southwest to the Northeast toward the Springs. The sand/gravel unit itself ranges in thickness from 5 feet to 65 feet. Figure 16 is a geologic cross section showing the thickness of the unit.

Table 3 is an inventory of available SWRs indicating the presence/absence of the sand facies. The lateral extent of the sand/gravel unit is in part inferred from drilled water wells that did not encounter the unit. Many of these wells did not produce water and were subsequently plugged as shown on Figure 14. The transition along the margins of the sand/gravel unit to limestone can be very abrupt as shown on margins of Figure 15. The sand unit may be in connection with the alluvium (Qal) of Little Cypress Creek southwest of the park.



Figure 13a. Core showing the Sycamore Sand in the shallow subsurface at CTGCD MW1



Figure 13b. Outcrop of the Sycamore Sand (Ksy) conglomerate

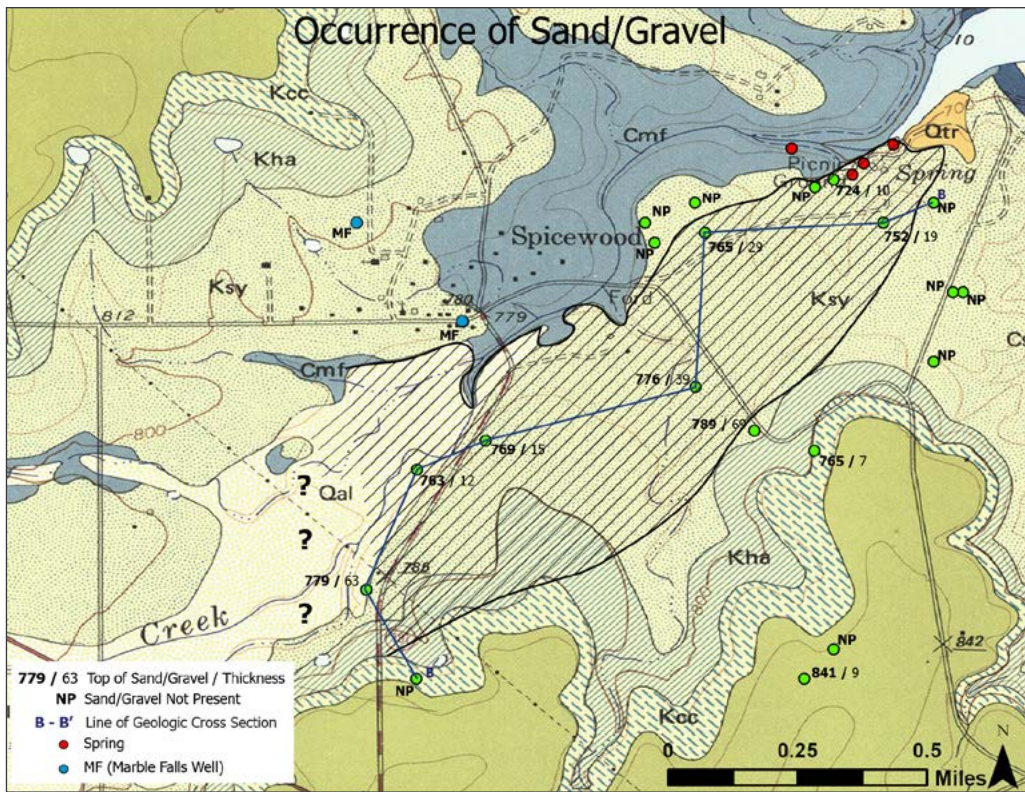


Figure 14. Inferred Occurrence of Sycamore Sand. Hatched area represents the inferred extend of sand and gravel of the Sycamore Sand based upon outcrops and subsurface well data. Base map after Barnes, 1982.

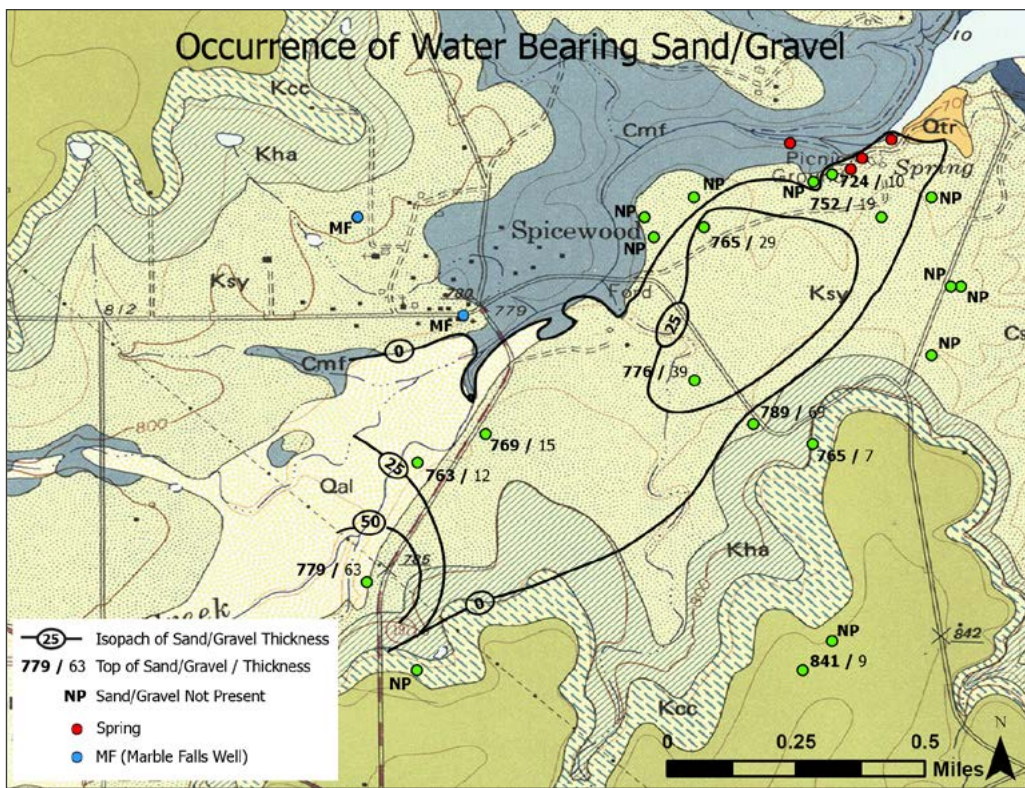


Figure 15: Occurrence of Water Bearing Sand/Gravel

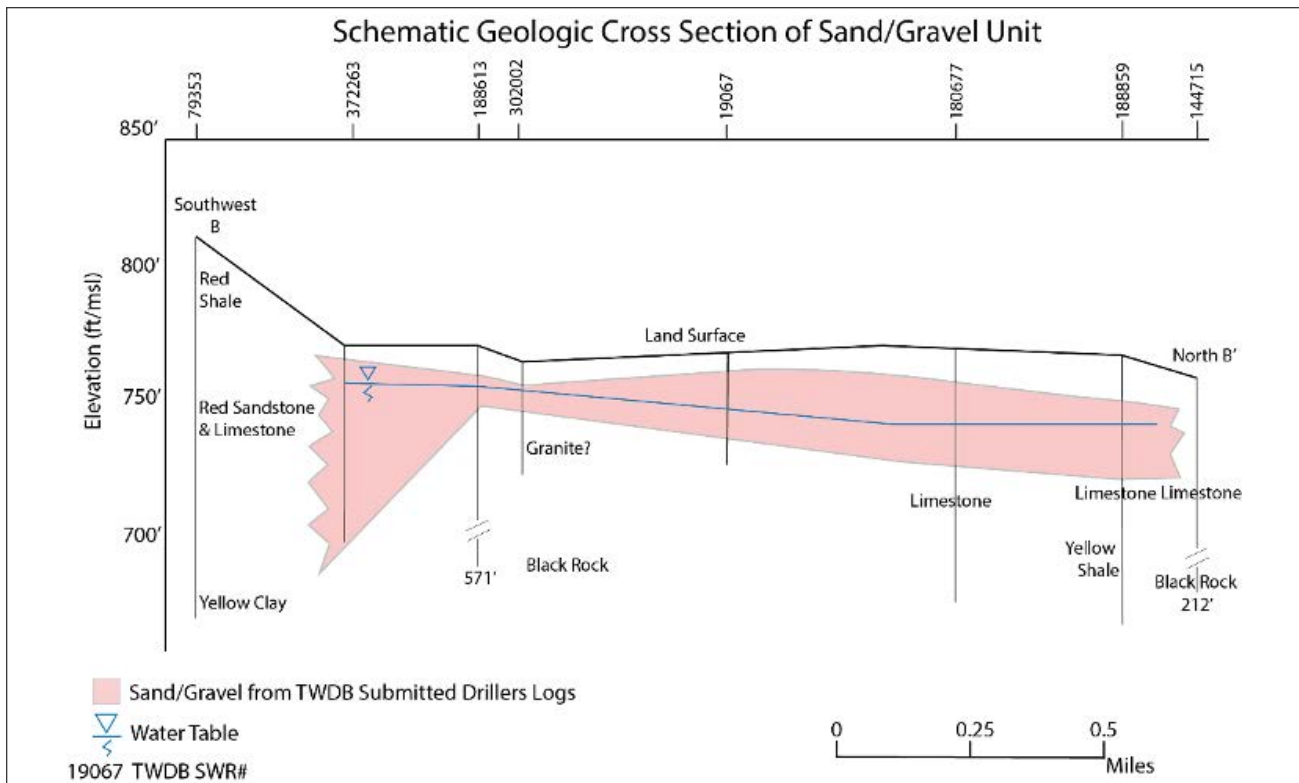


Figure 16. Schematic Geologic Cross Section of Sycamore Sand (Ksy) and gravel unit

Table 3. Inventory of TWDB Wells

SWR #	Latitude	Longitude	Elevation	TD	Plugged P/N	Depth to SA/GR	Elev Top S/G	Elev Bottom S/G	Thickness S/G	Yield	Screen Interval
19067	30 28 33	98 09 03	777	40	N	1	776	737	39	15	0-35
20180	30 28 21	98 08 55	790	270	P	1	789	720	69	0	P
24805	30 27 57	98 08 40	845	180	P	11	834	829	5	0	P
24086	30 27 59	98 08 47	850	205	N	9	841	832	9	2	80-205
79353	30 27 56	98 09 29	836	160	N	NP	NP	NP	NP	2	30-100
131486	30 26 33	98 09 20	1044	120	N	NP	NP	NP	NP	5	20-40
144715	30 28 44	98 08 37	752	480	P	NP	NP	NP	NP	0	P
144718	30 28 28	98 08 37	764	140	P	NP	NP	NP	NP	0	P
144753	30 28 35	98 08 34	781	140	P	NP	NP	NP	NP	0	P
168575	30 28 35	98 08 35	783	140	N	NP	NP	NP	NP	0.5	40-140
180663	30 28 42	98 09 01	778	90	P	1	777	739	38	0	P
180666	30 28 40	98 09 05	784	90	P	NP	NP	NP	NP	0	P
180668	30 28 42	98 09 06	777	105	P	NP	NP	NP	NP	0	P
180671	30 28 44	98 09 01	775	105	P	NP	NP	NP	NP	0	P
180677	30 28 41	98 09 00	774	105	N	9	765	736	29	30	27-38
180613	30 28 24	98 09 24	771	200	N	8	763	751	12	2	0-30
188859	30 28 42	98 08 42	767	105	N	15	752	733	19	75	22-41
283152	30 28 19	98 08 49	821	144	N	56	765	758	7	0.6	50-100
300215	30 27 56	98 08 50	855	155	N	NP	NP	NP	NP	3	75-135
372263	30 28 20	98 09 22	791	75	N	12	779	716	63	33	35-75
302002	30 28 05	98 09 34	789	50	N	20	769	754	15	7	15-50
534626	30.475556	-98.15675	781	45	N	25	756	741	15	5	25-45

P = plugged

N = not plugged

NP = not present

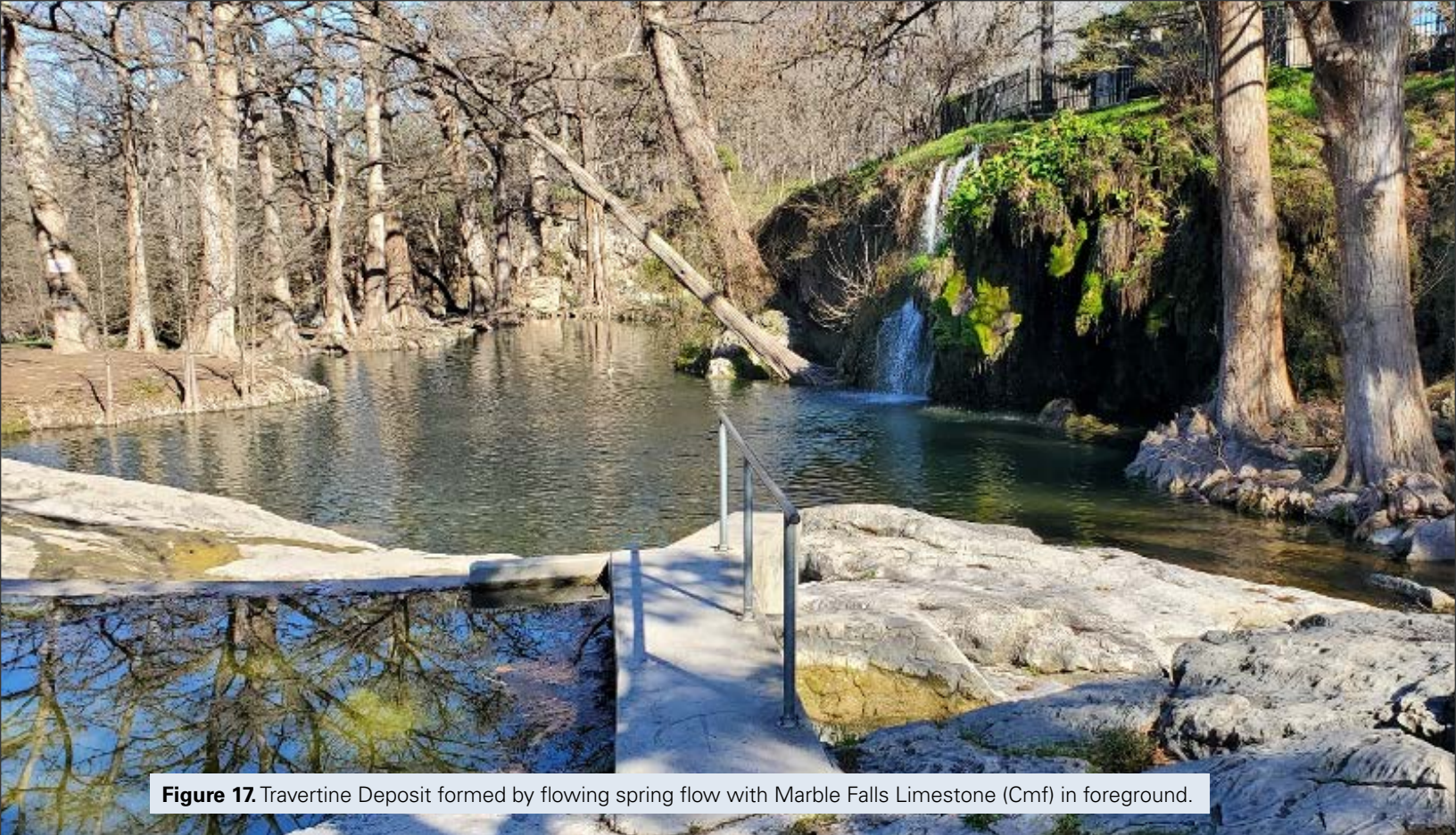


Figure 17. Travertine Deposit formed by flowing spring flow with Marble Falls Limestone (Cmf) in foreground.

The origin of the groundwater in the Sycamore Sand (Ksy) is the same as the “Basement sands” as described by Hill (1891). These Basement sands are undoubtedly of shallow-water or near shore origin and represent the ancient marginal deposits of the sea as it encroached upon the land. Everywhere next to the Paleozoic floor and conformable to its slope, this bed of sand, which seldom reaches 200 feet in thickness, persists as an apparent formation, blanketed between the underlying Paleozoic floor and overlying calcareous beds, and inclines towards the sea at a slightly greater angle than the latter (Hill, 1891).

In April of 2019, the CTGCD drilled two corings in the parking lot of the park above the springs (See Figure 8 for location). Coring #1 was converted to Monitoring Well #1 (SWR# 510663, Appendix B) and represented on Figure 12 Geologic Cross Section. The coring was advanced to a depth of 65 feet below ground surface (bgs). MW1 was instrumented with a screen bottom section between 15 and 25 feet bgs, solid riser the surface and a pressure transducer to record water levels installed in the well. A downhole geophysical log was run and contained in Appendix B. The core samples and geophysical log show the upper unit present is the Sycamore Sand (Ksy). The unit varies from a pebble conglomerate, to light brown sandy clay to a clean, fine quartz water bearing sand at 20 feet Figure 16?. The Sycamore (Ksy) extended to 29 feet bgs. Depth to water at the time of drilling was approximately 5 feet indicating the Sycamore (Ks) is saturated. Smithwick (Csw) (Figure 15) was cored from 29 feet bgs to 59 feet bgs. The coring penetrated 6 feet into the underlying Marble Falls (Cmf).

Coring #2 was advanced to 25 feet bgs and a downhole geophysical log run (Appendix B). The log indicates Sycamore sand (Ksy) was encountered from 0-20 feet bgs. The Smithwick (Csw) was encountered from 20 feet bgs to the terminus of the coring at 25 feet bgs.

The Smithwick (Csw) is a light brown clay, extending to 59 feet bgs (Figure 19) at MW 1. The Smithwick (Csw) is a shale unit that can act as an underlying perching layer for shallow groundwater. The Marble Falls Limestone (Cmf) was encountered at 59 feet bgs and extended to the terminus of the coring at 65 feet bgs. The Marble Falls (Cmf) is the surficial geologic unit just north of MW1 indicating there is likely a fault just north of MW1 as noted by Hunt et al. (2020).

Overlying the Sycamore Sand (Ksy) to the south of the park is the Hammett Shale (Kha). Based on driller's well logs, the unit is approximately 30 feet thick. The shale acts as an aquitard restricting the downward percolation of surface recharge to the Sycamore Sand (Ksy).

The Cow Creek Limestone (Kcc) of the Trinity Group is fine to medium grained, skeletal limestone and fine crystalline dolomite overlying the Hammett Shale (Kha). It is resistant to weathering and often forms steep cliffs in the region, although the Cow Creek is very thin in the study area. The Hensel sand (Kshh) overlies the Cow Creek (Kcc). It is commonly a sandy dolomite in this area of Central Texas with lesser amounts of silt and clay. Further to the south, the Hensel (Kshh) is overlain by the Glen Rose Limestone (Kshgr). The Glen Rose (Kshgr) has alternating layers of limestone, dolomite, marl and clay (Barnes, 1982).

There is a large cliff forming travertine deposit in the park created by the precipitation of carbonate minerals from solution of spring flow (Figures 17). Spring flow creates waterfalls above the main pool in the park.



Figure 18. Sycamore sand (Ksy) facies encountered at MW1 at 20' bgs. (photo: Paul Babb)



Figure 19. Core of the Smithwick Shale (Csw) at MW1. Photo from (Hunt et al, 2020)

WELL YIELDS

Well yields reported on driller's logs are generally noted during development of the well during construction. Yields are usually visually estimated by the driller so should be considered estimates. Figure 20 shows reported well yields from the Sycamore Sand (Lower Trinity). The wells with measured yields correlate very closely with wells that encountered sand and gravel. Wells that produce water are generally screened across the sand and gravel zone. Many of the wells that have been drilled in the area did not encounter sand/gravel, had no yield and were subsequently plugged. In several areas there are producing wells that encountered sand and gravel near wells that were drilled and plugged due to lack of production. This may be indicative of facies changes in the Sycamore Sand having poor porosity and permeability, or additional faulting, particularly in the vicinity of the park.

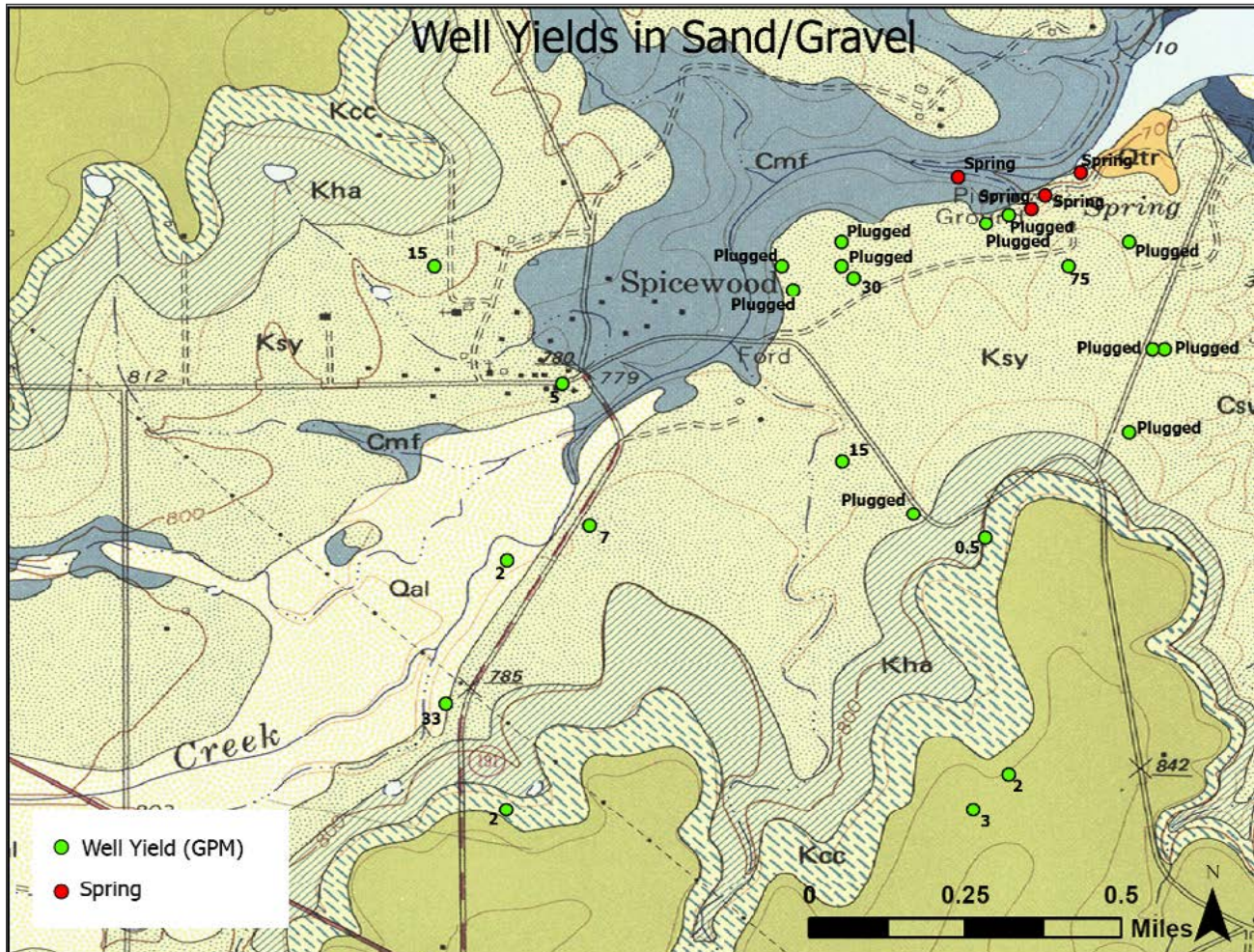


Figure 20. Well yields obtained from TWDB State Well Reports

GROUNDWATER RESOURCES

Groundwater Level Monitoring

Water levels were obtained on July 30 and December 3, 2020 from accessible wells with landowner permission. Approximately 15 wells were measured. The wells are shown on Figure 20 and the data tabulated on Table 5.

Water levels were consistent between the two monitoring events. Water level elevations measured in wells on the July event ranged from 743.6 feet msl near the park to 768.6 feet msl south of the park along TX Spur 191, and 737.2 feet msl to 769.7 ft-Mal during the December event. Shallow groundwater across the area of interest flows from south to north towards Little Cypress Creek and the discharging springs as shown on Figure 22. Water level elevations in the vicinity of the park were relatively low gradient, varying only by approximately one foot. Flat water levels are typical of high permeability deposits such as sand and gravel and also near major discharge locations, such as springs. The pressure transducer in MW1, installed in 2019, records water pressure/levels daily. The water level data from the transducer, Figure 23, shows little seasonal fluctuations with water levels generally varying by less than 1 foot. Water level elevations likely continue to drop near the park springs along the south bank of Little Cypress Creek.

Table 4. Water Quality Wells and Groundwater Elevations

Map #	CTGCD #	SWR #	Owner	Latitude	Longitude	Ground Surface Elevation	TD	MP	DTW 7/30/2020	Elevation 7/30/2020	DTW 12/3/2020	Elevation 12/3/2020
1	212	19067	Wall	30.473411	-98.150870	777	40	NM	NM	NM	NM	NM
2	1993	168575	LCRA	30.476389	-98.143056	783	140	1.5	39.6	744.9	39.72	744.8
3	2113	180677	Krause	30.478055	-98.150001	774	105	1.5	31.15	744.35	30.6	745.0
4	2198	180613	Jeager	30.471841	-98.158571	771	200	4.9	15.35	760.55	15.55	760.35
5	2201	188859	Krause	30.478338	-98.145108	767	105	1.9	24.3	744.6	24.08	744.8
6	5555	283152	Parish	30.471949	-98.146934	821	144	1.78	63.2	759.58	74.6	748.2
7	6032	372263	Miller	30.472236	-98.156111	791	75	1	34.5	757.5	34.78	757.2
8	7177	510663	CTGCD	30.479458	-98.146369	744	25	0	7	737	6.77	737.2
9	NR	NR	Bible HD	30.478001	98.153254	756	NM	NM	NM	NM	NM	NM
10	NR	5739312	Krause	30.478634	-98.145278	764	NM	1.7	22.05	743.65	21.82	743.9
11	NR	NR	Wall HD	30.075106	-98.152661	767	NM	2.5	13.2	756.3	13.25	756.3
12	7397	534626	Arnold	30.475656	-98.156667	781	45	NM	NM	NM	NM	NM
13	7172	515469	Naumann	30.478422	-98.159733	NM	100	NM	NM	NM	NM	NM
14	NR	NR	Jeager	30.469497	-98.159267	783	80	1.3	15.7	768.6	16.06	768.2
15	3569	NR	Ashmore	30.486477	-98.159162	788	80	1.2	19.5	769.7	19.5	769.7

NR = Not Registered
 NM = Not Measured

MP = Height of measuring point
 TD = Total Depth

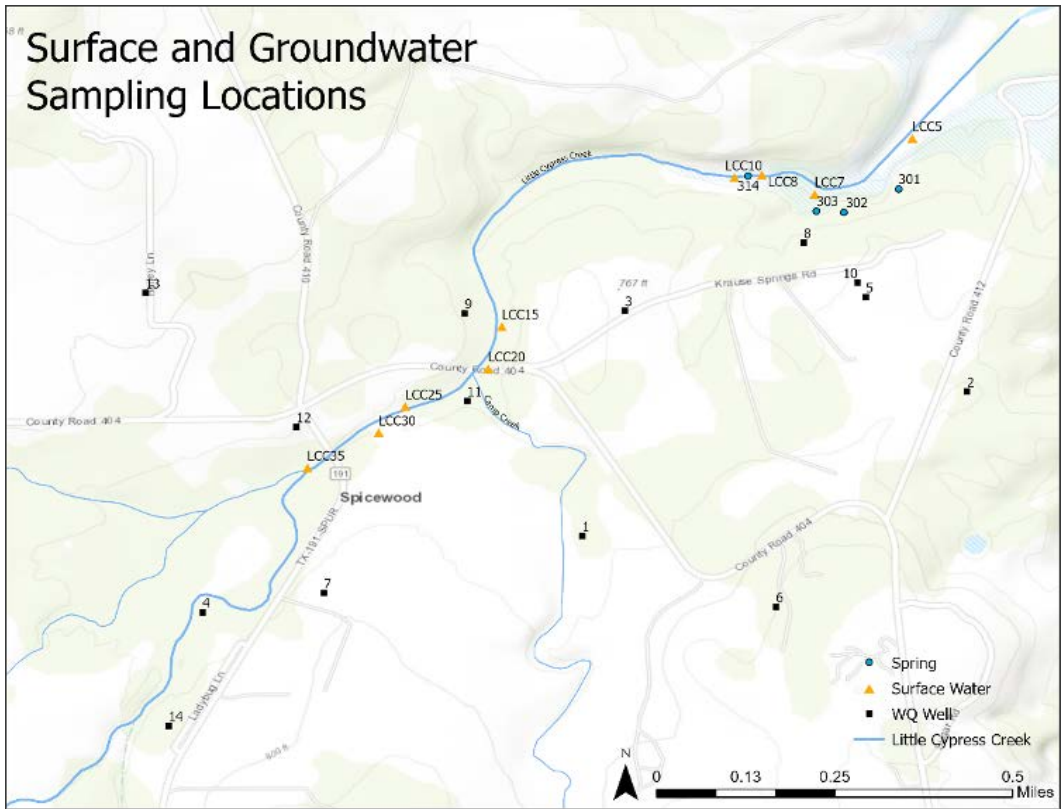


Figure 21. Surface and Groundwater Sampling Locations

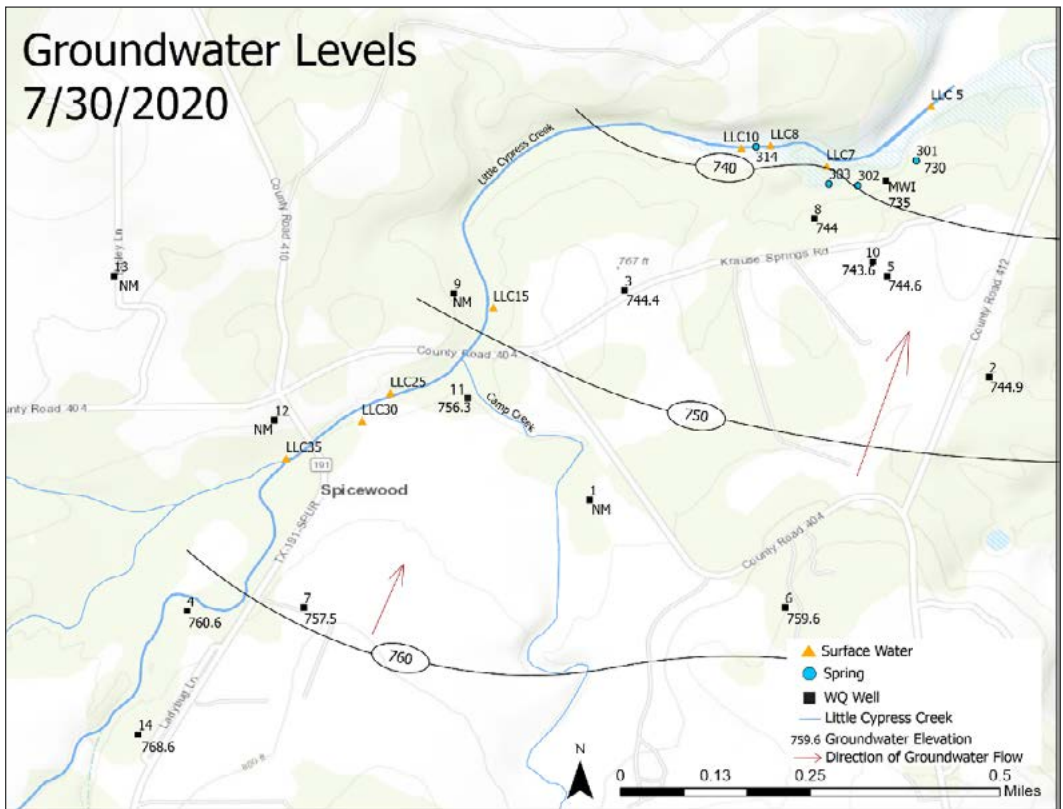


Figure 22. Potentiometric surface map

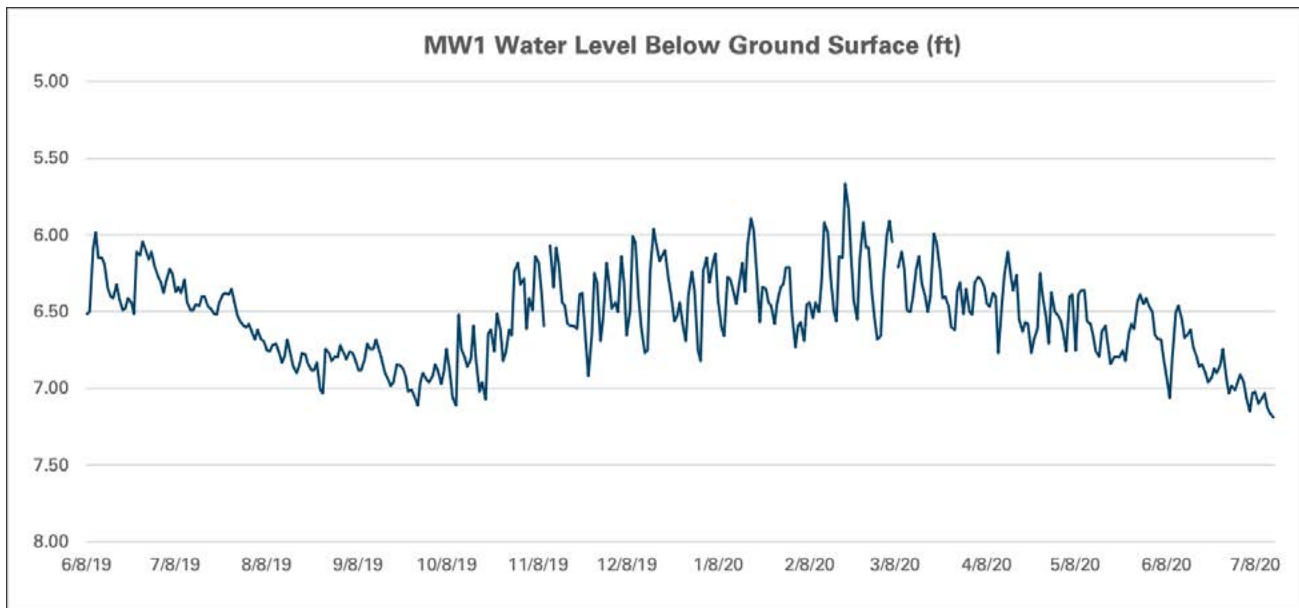


Figure 23. CTGCD MW1 transducer water level data

Surface Water/Groundwater Interactions

Previous literature indicated that the springs may originate from the Marble Falls Limestone (Cmf).

From Brune (1981): “One-kilometer northeast of Spicewood are the beautiful Krause Springs, the main source of Little Cypress Creek. Formerly known as Spicewood Springs, they served as a water supply for the settlement of Spicewood. The thousands of wild turkeys that once fed in this area gave their name to Turkey Bend of Lake Travis to the northeast. The springs issue at a relatively constant discharge (about 19 liters per second (lps) (0.67 cubic feet second (cfs) or 300 gallons per minute (gpm)) on August 3, 1975) from many openings in the Marble Falls limestone with deposits of travertine.”

The springs of Krause Springs have consistent, year-round flow from openings in the Marble Falls limestone with deposits of travertine (Brune, 1981). The recharge area of Krause Springs is thought to be a few kilometers to the west of the springs, where the flowing water in Little Cypress Creek crosses crevices and faults in the Marble Falls limestone, eventually entering the ground through the underlying aquifer (Brune, 1981).

Also from LCRA (2008): “The main spring that feeds the swimming pool flows at 70 gpm [gallons per minute] at a constant temperature of 70 degrees. The springs have never gone dry, even during the severe drought of the 1950s. The springs issue from the Marble Falls Limestone (Cmf) into Little Cypress Creek. The creek has perennial flow from County Road 191 crossing near Spicewood to Lake Travis.”

The most obvious expression of surface water/groundwater interactions are the many springs at the Krause Springs Park and its immediate vicinity. Springs flow from the hillside springs on the south bank of the creek creating waterfalls. The main springs (5739301, 5739302 and 5739303) in the park appear to originate from sand/gravel facies of the Sycamore Sand (Figure 10). At the Bradfield spring (5739314), flow originates from the base of a cliff of the Marble Falls (Cmf) at creek bed level just upstream of the park. (Figure 20) The Marble Falls (Cmf) in this area is highly fractured and likely faulted (Figure 8).



Figure 24. Bradfield Spring originating from base of a cliff of the Marble Falls Limestone (Cmf)

FLOW DISCHARGE MEASUREMENTS

Stream flow measurements were made on several occasions to determine which reaches of Little Cypress Creek are gaining water and which reaches may be losing water to the subsurface. By measuring stream flow above and below the springs, the amount of water discharged from the aquifer via springs can be quantified. These measurements may provide insight into the size of the recharge area for the springs.

Stream flow measurements were obtained on 3/5/2020, 3/26/2020, 7/30/2020 and 12/3/2020. Flow measuring locations are shown on Figure 21 and flow data contained in Table 5. There were some changes in gauging locations between events due to changing land access issues.

Table 5. Summary of Stream Discharge Monitoring - Little Cypress Creek

River Mile	Station ID	Station Name	3/5/2020 (GPM)	3/26/2020 (GPM)	7/30/2020 (GPM)	12/3/2020 (GPM)
1.5	LCC30	LCC below 191 bridge	NM	NM	20.2	40.4
1.44	LCC20	LCC at low water crossing on CR 404	85.3	190.7	NM	NM
1.27	LCC15	LCC @ Bible property	NM	NM	68.7	67.4
0.18	LCC10	Bradfield site creek channel + Bradfield spring (LCC10+303A)	170.5	264.8	NM	*
0.15	LCC8	Krause Springs property line at Bradfield Ranch	NM	NM	32.8	148.2
0.07	LCC7	Bridge site with five spillways at Krause Springs Park	251.3	327.6	44.4	139.3
0	LCC5	Little Cypress Creek downstream from Krause Springs Park	502.7	1552.8	204.0	368.2
	7177	Contribution to Little Cypress Creek From Krause Park Springs (LCC5-LCC7)	251.3	1225.2	159.5	228.9
	NR	Contribution to Little Cypress Creek From Bradfield and Krause Park Springs (LCC5-LCC15)			135.3	300.8
	CC1	Camp Creek Tributary			89.8	40.4

Notes:

Discharge Measurements expressed in gallons per minute

**Main Channel adjacent to Bradfield Spring was dry*

NM = No Measurement

No flow was observed from the upper reaches of Little Cypress Creek, from the headwaters south of Hwy 71 to near Sampling Location LCC 35 during any of the measurement events. This long reach of the creek is ephemeral, likely only flowing during significant precipitation events. The first flowing water encountered was just upstream of LCC 35 at the confluence of Little Cypress Creek and a small tributary joining from the north. The flow was too low to reliably measure in either channel on all occasions. Water likely originates from the alluvial deposits in the stream channels. The Marble Falls Limestone (Cmf) crops out approximately 100 yards downstream of the first occurrence of water in the main channel. Water originating from the outcrop was not observed.

Measurable flow (20-40 gpm) was encountered at LCC30 several hundred feet downstream of LCC35. The creek straddles the creek alluvium (Qal) /Sycamore Sand (Ksy) with the Marble Falls Limestone (Cmf). Flow was measured on two occasions at Camp Creek (CC1), a tributary of Little Cypress Creek that joins just south of CR 404 low water crossing. Consistent flow in Camp Creek originates approximately 100 yards upstream of CC1 where a large pool of water was observed. This was confirmed by the long-time landowner. The creek is ephemeral upstream (south) of the pool. The combined flow from Camp Creek and Little Cypress Creek is represented at LCC15 on 7/30/2020 and 12/3/2020 and at LCC20 on the two March measurement events. Flow was consistent between the July and December measurements at 67 to 69 gpm. Flow gains upstream of CR 404 likely originates in the confined Sycamore Sand (Ksy) /alluvium (Qal) which in places is likely transmitted through the Marble Fall Limestone (Cmf) to the creek.

On two occasions there was a loss of water along the reach from CR 404 to the western boundary of the park downstream of Bradfield spring (5738314). On two occasions there were gains. No flow was observed in the creek channel adjacent to the Bradfield spring on 12/3/2020, though the spring as measured approximately 100 yards downstream (LCC8) and was flowing at 148 gpm (Figure 27). Access was not available to the creek between LCC15 and LCC8 during the 12/3/2020 event to further investigate the total loss of stream flow. Discharge from the Bradfield spring as measured at LCC8 on 12/3 was 148 gpm versus the 68 gpm loss downstream of LCC15. The reach between LCC15 and LCC8 is mapped as Marble Falls limestone (Cmf). It is not clear if the lost water resurfaces at the spring. Additional gains via the spring may occur directly from the Marble Falls (Cmf) or in combination with the overlying Sycamore Sand (Ksy) contributing via fractures in the Marble Falls (Cmf). Water may migrate downward from the Sycamore (Ksy) through the Marble Falls (Cmf) and discharge at the base of the cliff.

Downstream of the park boundary, flow increases through the park as the hillside springs contribute significant flow to the creek. The increase in creek flow from upstream of the Krause Springs (LCC7) to downstream of the park (LCC5) ranged from 158.8 gpm to 1225.2 gpm (Table 5).

Based on this study, the typical discharge is 150 gpm to 300 gpm. The increase from spring flow represents the discharge from the basal sand/gravel unit of the Sycamore Sand (Ksy).

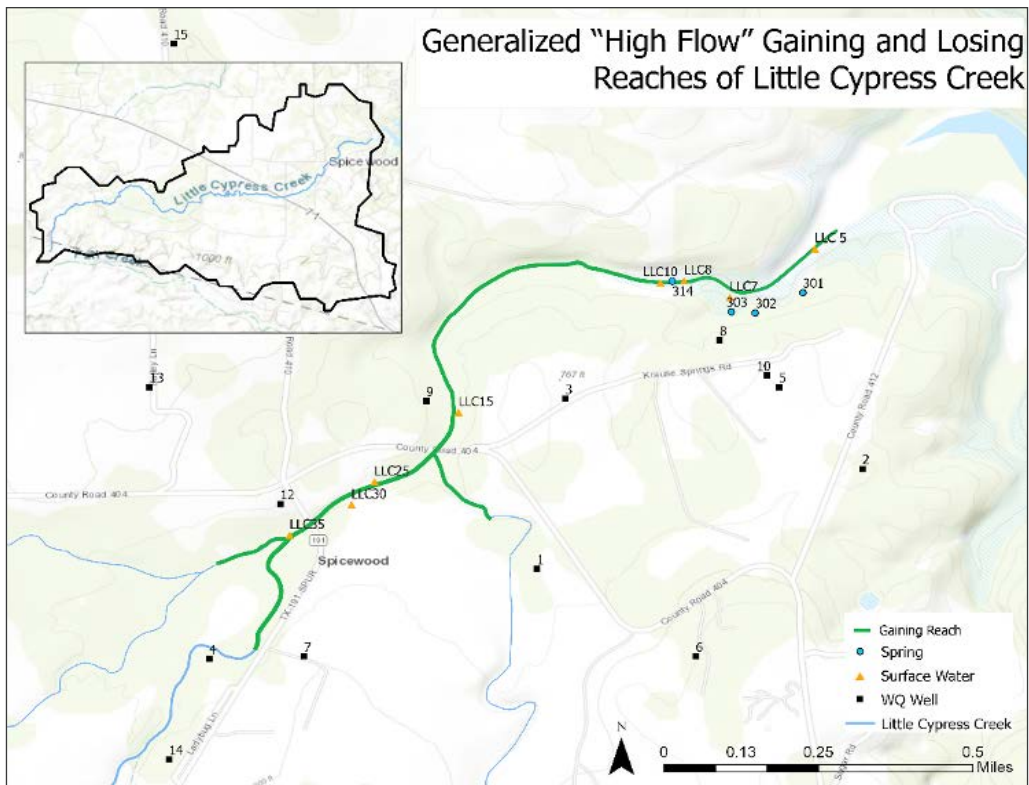


Figure 25. Generalized “High Flow” Gaining and Losing Reaches of Little Cypress Creek

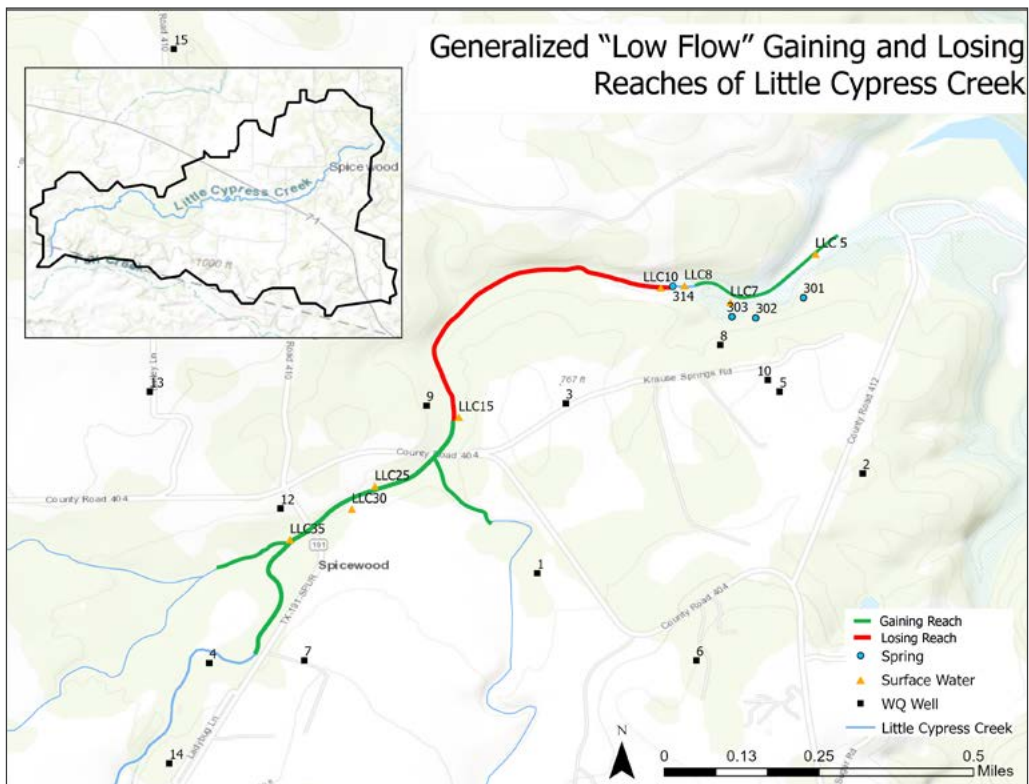


Figure 26. Generalized “Low Flow” Gaining and Losing Reaches of Little Cypress Creek

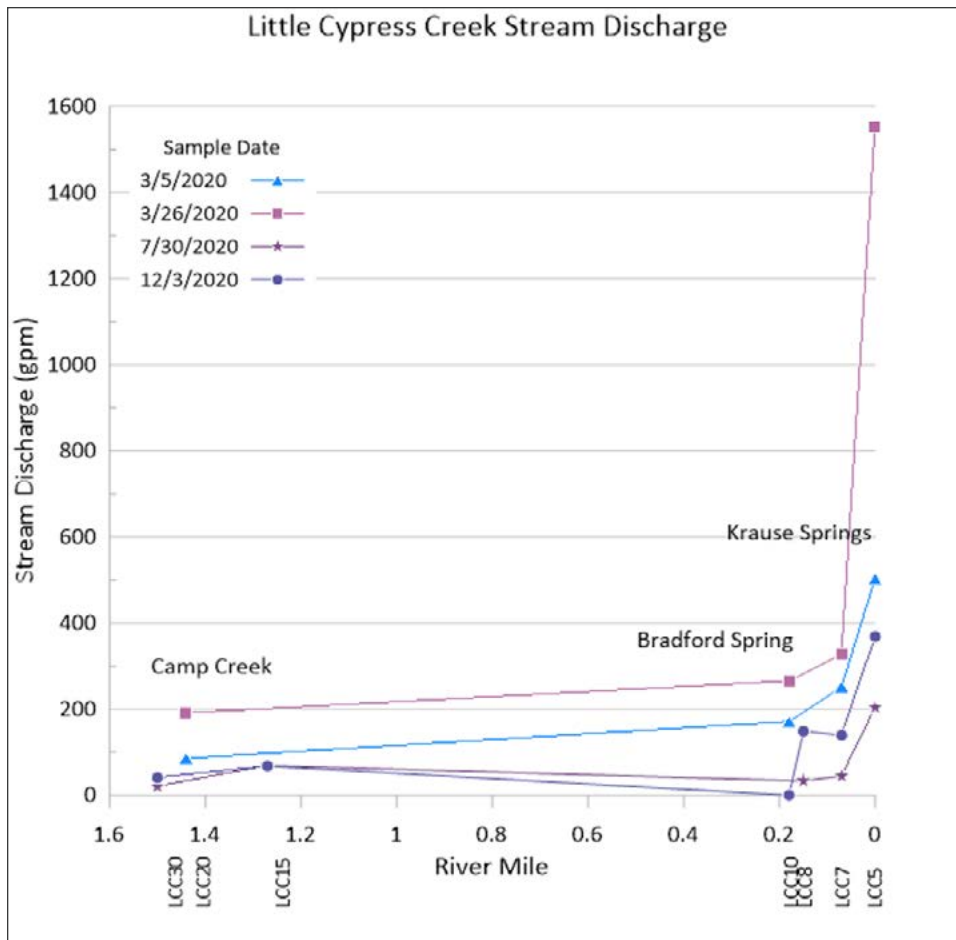


Figure 27. Streamflow Discharge Monitoring Results



Figure 28. Monitoring site LCC7



Figure 29. Little Cypress Creek near Bradfield Spring. Note main channel is dry with all flow originating from spring

WATER QUALITY

Surface and Groundwater Quality

Waters of similar quality can be inferred as having the same source. Water quality samples were obtained from 12 surface/spring water and 8 groundwater samples on July 30, 2020. Field parameters of pH, specific conductivity, temperature and dissolved oxygen were obtained at the time of sampling. Common cation and anions were analyzed using US EPA Methods at the Edwards Aquifer Research Data Center (EARDC) at Texas State University (Appendix C). During 2017 and 2019, water quality samples were collected from several springs and wells as part of the TWDB routine sampling of water around the state. In addition to an extensive list of parameters analyzed, age dating isotope (Carbon-14 was analyzed to estimate the age of the water at several locations. Tritium was also analyzed at several locations. These isotopes can reflect a relative age of the groundwater, with younger water indicative of water that recharged the aquifer and has not had long residency time in aquifer. In addition, TWDB has collected a few well water samples in the area over time. These data were retrieved as part of this study. Water samples for analysis of liquid water stable isotopes of oxygen ($\delta^{18}O$) and hydrogen (δ^2H) were run on several samples.

The results of the July 2020 surface water and groundwater sampling event are shown on Table 6.

Table 6. Water Quality Sampling Results

Site ID	1	3	5	6	7	8	9	10	11	12	14	15	301	302	303	314	CC1	LCC35	LCC30	LCC25	LCC15	LCC8	LCC7	LCC5	LCC8 Dup
Description	Well	Well	Well	Well	Well	Well	Well	Well	Well	Well	Well	Well	Spring	Spring	Spring	Spring	Creek	Creek	Creek	Creek	Creek	Creek	Creek	Creek	Creek
Fluoride (mg/L)	3.4	3.3	3.2	3.1	2.6	3.8	3.7	3.6	2.8	3.7	2.5	3.9	3.6	3.3	0.3	0.4	2.7	2.7	3.4	3.4	3.5	3.3	2.9	2.7	4.0
Chloride (mg/L)	15.0	14.3	19.8	24.3	14.4	17.4	68.5	18.4	16.1	35.5	12.2	17.0	19.1	19.0	17.4	25.8	15.8	16.6	20.2	19.6	19.1	20.0	22.0	21.6	20.2
Nitrite (mg/L)	<1	<1	<1	<1	<1	<1	1.0	<1	<1	<1	<1	<1	<1	<1	<1	<1	<1	<1	<1	<1	<1	<1	<1	1.0	<1
Bromide (mg/L)	1.1	<1	<1	<1	<1	1.1	1.2	<1	<1	1.1	<1	1.1	<1	1.1	<1	<1	<1	<1	<1	<1	<1	<1	1.1	1.1	1.1
Nitrate (mg/L)	3.9	3.4	3.0	3.8	3.6	1.5	16.5	2.8	3.9	16.1	3.5	2.5	1.9	2.5	<1	2.3	2.6	1.4	1.6	1.5	1.5	1.8	1.3	2.8	1.6
Phosphate (mg/L)	0.0	0.0	<1	<1	<1	<1	<1	<1	<1	<1	<1	<1	<1	<1	<1	<1	<1	<1	<1	<1	<1	<1	<1	<1	<1
Sulfate (mg/L)	16.5	17.2	16.4	21.6	17.6	14.6	44.5	16.3	16.5	31.5	14.7	18.4	16.3	17.6	17.4	18.5	16.4	17.7	18.3	17.3	16.1	14.3	15.9	17.1	14.3
Lithium (mg/L)	<0.1	<0.1	<0.1	<0.1	<0.1	<0.1	<0.1	<0.1	<0.1	<0.1	<0.1	<0.1	<0.1	<0.1	<0.1	<0.1	<0.1	<0.1	<0.1	<0.1	<0.1	<0.1	<0.1	<0.1	<0.1
Sodium (mg/L)	10.9	12.5	8.9	32.9	11.2	30.8	36.1	10.4	12.8	30.7	9.5	12.8	9.5	11.6	11.1	20.3	12.7	14.9	18.0	18.1	16.4	17.4	17.6	13.9	17.2
Ammonium (mg/L)	<0.1	<0.1	<0.1	<0.1	<0.1	<0.1	<0.1	<0.1	<0.1	<0.1	<0.1	<0.1	<0.1	<0.1	NM	NM	<0.1	<0.1	<0.1	<0.1	<0.1	<0.1	<0.1	<0.1	<0.1
Potassium (mg/L)	<0.1	<0.1	<0.1	2.0	<0.1	1.6	19.2	<0.1	<0.1	0.6	<0.1	<0.1	<0.1	<0.1	<0.1	1.6	<0.1	0.1	0.1	0.1	0.3	0.2	0.3	0.1	0.2
Magnesium (mg/L)	26.8	24.4	28.9	31.7	23.3	26.5	32.4	27.8	25.6	26.3	22.1	35.8	29.9	27.7	31.7	27.6	24.4	24.8	25.9	26.1	26.6	26.8	26.9	28.3	26.5
Manganese (mg/L)	<0.1	<0.1	<0.1	<0.1	<0.1	<0.1	<0.1	<0.1	<0.1	<0.1	<0.1	<0.1	<0.1	<0.1	<1	<1	<0.1	<0.1	<0.1	<0.1	<0.1	<0.1	<0.1	<0.1	<0.1
Calcium (mg/L)	90.9	91.9	82.0	57.1	91.0	77.9	123.5	83.3	93.1	102.3	94.4	96.6	84.4	87.3	90.3	90.4	90.6	88.4	88.6	88.5	90.2	87.4	80.6	75.9	86.1
Strontium (mg/L)	<0.1	<0.1	<0.1	<0.1	<0.1	<0.1	<0.1	<0.1	<0.1	<0.1	<0.1	<0.1	<0.1	<0.1	<0.1	<0.1	<0.1	<0.1	<0.1	<0.1	<0.1	<0.1	<0.1	<0.1	<0.1
Barium (mg/L)	<0.1	<0.1	<0.1	<0.1	<0.1	<0.1	<0.1	<0.1	<0.1	<0.1	<0.1	<0.1	<0.1	<0.1	<0.1	<0.1	<0.1	<0.1	<0.1	<0.1	<0.1	<0.1	<0.1	<0.1	<0.1
Total Alkalinity (as CaCO ₃) (mg/L)	320	322	298	288	880	406	316	332	338	318	320	302	324	376	343	321	318	318	312	330	338	330	326	298	324
Bicarbonate (calculated as HCO ₃)	390	393	364	351	1074	495	386	405	412	388	390	368	395	459	418	391	388	388	381	403	412	403	398	364	395
E. coli (MPN/100mL)																		26	43						
Temperature (°C)	22	22.3	21.8	22.3	NM	29.2	22	22.7	21.8	23	22.2	22.7	21.5	22.1	NM	NM	23.8	NM	25.2	25.4	26.1	23.7	25.4	25.8	NM
pH (su)	6.94	6.97	7.23	7.27	NM	6.79	7	7	6.99	7.6	7	7	6.98	7.09	NM	NM	7	NM	7.3	7.5	7.6	7.3	7.5	7.8	NM
DO (mg/L)		NM	NM	NM	NM	NM	NM	NM	NM	7.2	6.25	NM	NM	NM	NM	NM	5	NM	3.1	5	6.4	6.1	4.3	5.8	NM
Conductivity (µS/cm)	691	694	994	677	NM	1044	734	717	838	691	697	674	675	955	NM	NM	697	NM	722	724	736	714	697	667	NM
NM = Not Measured																									
Spring 303 sampled 6/27/2016																									
Spring 314 sampled 7/30/2019																									

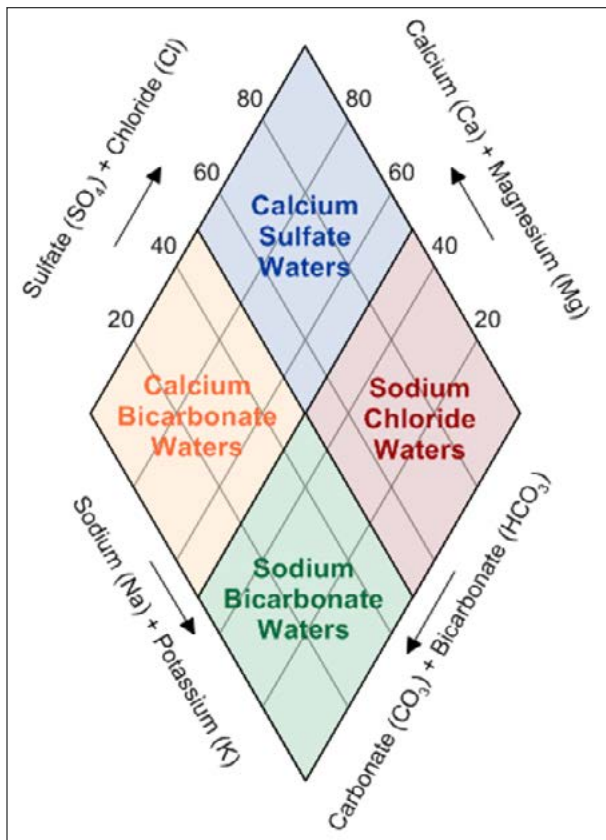


Figure 30. Sample Piper Plot

Piper plots (also known as trilinear diagrams) are used to visualize the abundance of common, natural ions in water. The plot comprises a ternary diagram showing cations (lower left), a ternary diagram representing anions (lower right) and a rhombic plot in middle.

Samples in the top quadrant are calcium sulfate waters, which are typical of gypsum ground water and mine drainage. Samples in the left quadrant are calcium bicarbonate waters, which are typical of shallow fresh ground water. Samples in the right quadrant are sodium chloride waters, which are typical of marine and deep ancient ground water. Samples in the bottom quadrant are sodium bicarbonate waters, which are typical of deep ground water influenced by ion exchange (Golden Software, 2020).

The water quality data obtained during the study in addition to the limited amount of previously collected TWDB well data were plotted on the Little Cypress Creek Piper Plot (Figure 30).

In general, cations and anions are very similar for all sampling points except for a few outliers at Wells 9 and 12, highlighted on Table 6. Chloride, nitrate, sulfate and sodium were elevated at Wells 9 and 12. Sodium was somewhat higher at wells 6 and 8. These wells are completed in the Marble Falls limestone (Cmf) whereas the other wells are completed, or screened through, the Sycamore (Ksy) indicating differing water quality between the two aquifers. Spring water quality is very similar to Sycamore Sand (Ksy) water quality. The Bradfield spring (5739314), which originates from the Marble Falls (Cmf), closely resembles the water quality of the other springs that originate out of the Sycamore (Ksy).

Carbon-14 dating, also called radiocarbon dating, is a method developed in the 1940s to determine the age of organic material. The half-life of Carbon-14 is 5730 years. Any sample containing a Carbon-14 fraction of 1 is very young water with Carbon-14 reflecting atmospheric level. All of the waters sampled indicated Carbon-14 fraction at one or slightly above one indicating the water is very young. The young age indicates the aquifer recharge area is near and there has been little residency time in the subsurface.

Tritium was detected in two springs (5739301 and 5739303), Table 7. Tritium is a naturally occurring radioactive isotope of hydrogen, which decays as a beta emitter. It is produced in small quantities in the upper atmosphere where it is incorporated into water molecules and, therefore, present in rainwater and surface recharge to aquifer systems. With a half-life of 12.3 years, tritium can be used to trace and date ground water. The amount of tritium in the atmosphere was greatly increased as a result of nuclear weapons testing causing recharge waters to be “tagged” with excess tritium beginning in about 1954. Given the short half-life of tritium, the presence of tritium indicates relatively young water. Samples collected indicate values between 1.48 TU and 1.81 TU, indicative of relatively young water. For comparison, 2017 sample of rainwater (TWDB Sample# 58-49-324) collected in southwest Austin indicated a tritium value of 2.65 TU.

Stable water isotopes follow the global meteoric water line indicating the samples reflect meteoric, or atmospheric, conditions. The global meteoric water line reflects the relationship between oxygen and hydrogen stable isotopes in natural meteoric (atmospheric) waters. Groundwater that reflects this relationship has been recently recharged by precipitation and not altered by rock water interaction or evaporation. This is also indicative of spring flow/ groundwater being of recent origin.

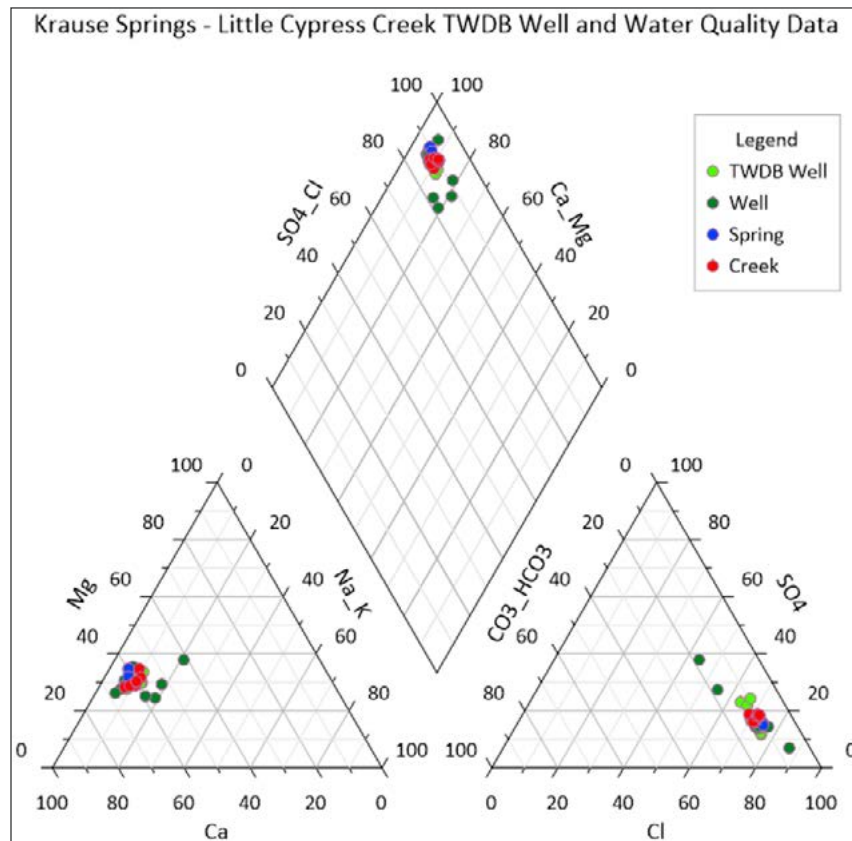


Figure 31. Piper Plot of July 2020 water quality data

Table 8. Carbon 14 and Tritium Sampling Results (* units - 0/00)

Sampling Location Dates	Carbon-14 Fraction Modern	Tritium in Water (Tritium Units)	Stable Isotope Oxygen* ($\delta^{18}O$)	Stable Isotope Hydrogen* (δ^2H)
5739301 Upper Spring (6/26/2017)	1.028	1.48	-4.62	-26.3
5739303 Western Spring (6/26/2017)	1.039	1.81	-4.76	-27.3
5739314 Bradfield Spring (7/29/2019)	1.033	NM	-3.91	-24.28
5739312 Krause Feed Shed (7/29/2019)	1.024	NM	-4.36	-27.07
5739313 Krause Pasture (7/29/19)	1.028	1.89	-4.51	-26
5739313 Krause Pasture (7/29/2019)	1.028	NM	-4.2	-26.61
5739304 Krause House Well (7/29/2019)	1.025	NM	-4.02	-25.62
5739315 Ashmore (7/29/2019)	1.028	NM	-3.36	-22.3

WATER BUDGET

A preliminary water budget was performed to get an order of magnitude estimate the size of the recharge area to support the spring flow at Krause Springs Park. Assuming all recharge in the springshed discharges at the springs, a 200 gpm annual discharge rate (323 acre-feet) for the springs and recharge rate of 0.25 -1.17 inches per year (Chowdhury (2009), approximately 3300 to 15000 acres would be of sufficient size to provide the recharge. Recharge rate is the key variable in a simple water budget. The low recharge rates used in this example would be indicative of diffuse recharge which is precipitation that infiltrates the ground surface and percolates through the unsaturated zone to the saturated zone. Focused recharge is precipitation overland and reaches the saturated zone via a focused source such as a losing stream, swallet or fractures. Both diffuse and focused recharge typically occur in the Hill Country. In certain circumstances, focused recharge can be as high as total runoff. Developing a groundwater model could provide additional insight into actual recharge rates.

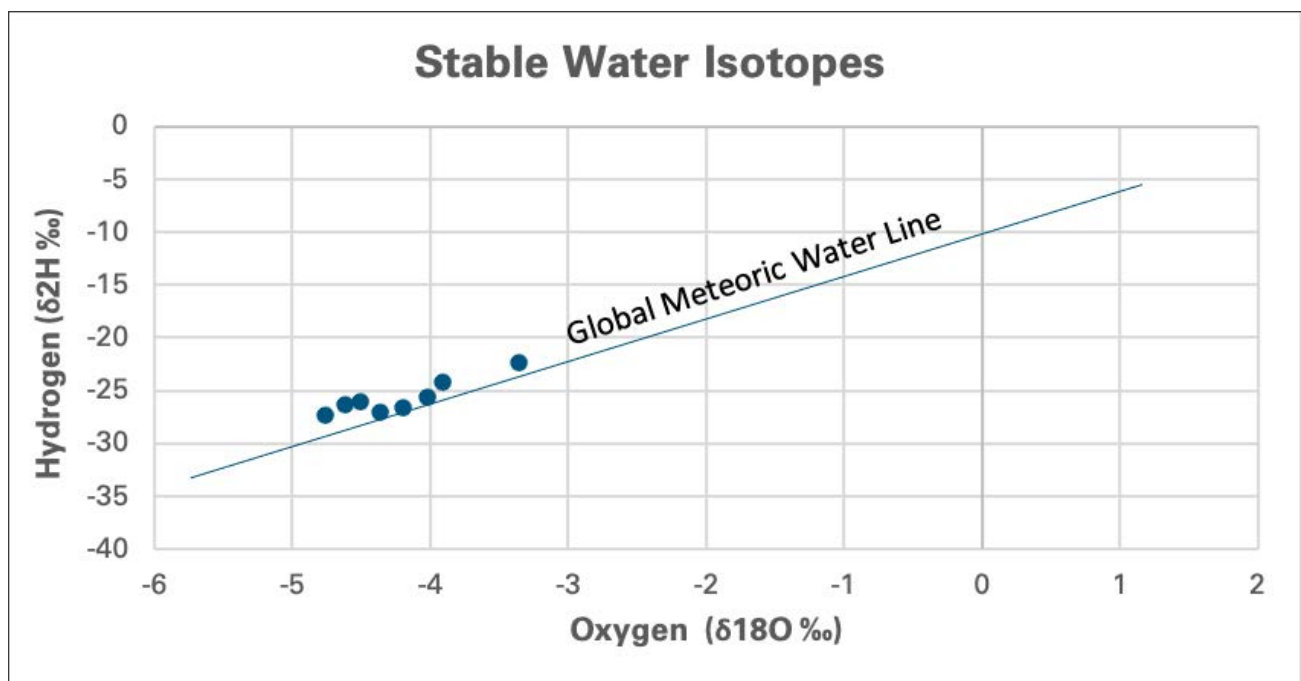
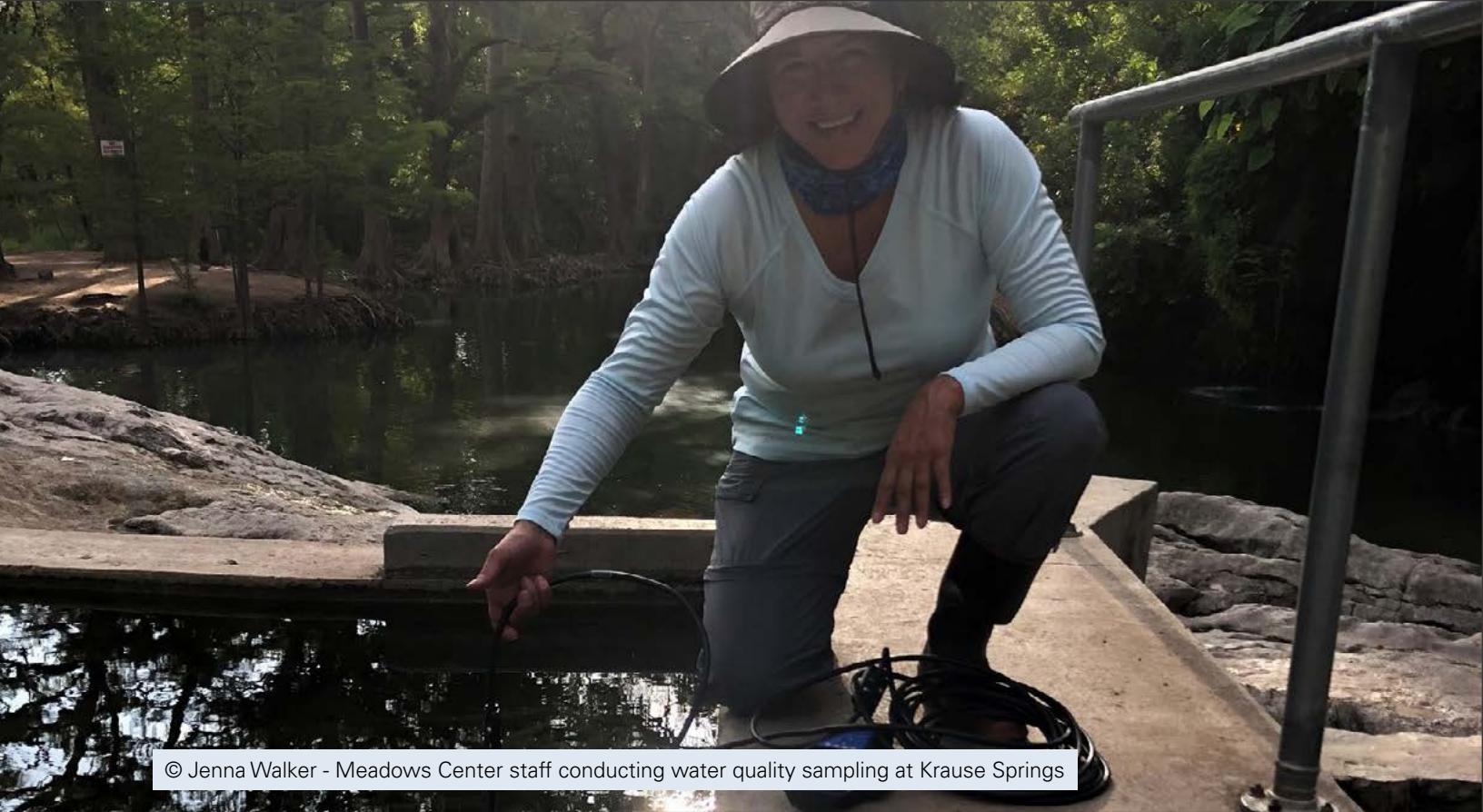


Figure 32. Stable Water Isotopes Preliminary Water Budget Analysis



© Jenna Walker - Meadows Center staff conducting water quality sampling at Krause Springs

DISCUSSION

Based on the data collected during this study, in addition to work previously performed by others, it appears the basal sands and gravels of the Sycamore Sand Formation (Ksy) provide the majority of the source water to the springs at Krause Springs and support base flow in Camp Creek. The Marble Falls Limestone (Cmf) may provide additional water or simply be a conduit from the Sycamore (Ksy) and alluvium (Qal). Alluvial deposits in Little Cypress Creek to the southwest of the park area may be hydraulically connected to the Sycamore Sand (Ksy). Due to land access issues, the source of stream losses and gains at and upstream of the Bradfield spring are not clear.

The results of a rock coring by the CTGCD indicate a clean, saturated sand unit at the base of the Sycamore (Ksy) near the springs. The Smithwick Shale (Csw) underlies the Sycamore (Ksy) at this location and acts as an impermeable layer retarding the downward movement of groundwater and likely influencing lateral flow.

Review of driller's logs from the Texas Water Development Board database show the presence of a sand/gravel unit beneath the park, though these data are sparse. There are many wells that did not encounter any water bearing formations and were plugged, helping to bracket the lateral extent of sand and gravel. Wells completed in the Marble Falls (Cmf) produce little or no water. Well yields from TWDB SWRs correlate with wells that encountered sand and gravel with higher yielding wells.

A low gradient potentiometric head surface in the vicinity of the park reflects the permeable nature of the Sycamore Sand (Ksy). Groundwater flow in the area of interest is from south to north towards the discharging springs.

Surface water, spring flow, and groundwater quality results show that surface water and groundwater from the Sycamore Sand (Ksy) are very similar, indicating the same source. Two wells completed in the Marble Fall Formation (Cmf) had a slightly different water quality signature than the Sycamore (Ksy) groundwater and spring flows. Carbon 14 isotopic age dating shows the springs and groundwater in the vicinity of the park to be very young. Stable water isotopes also indicate young water. Young water is indicative of a nearby recharge area and water that has not been in storage in the aquifer for long periods of time.



© Jenna Walker - Doug Wierman analyzing rocks

CONCLUSIONS

Based on the data collected during this study, in addition to work previously performed by others, it appears the basal sands and gravels of the Cretaceous Sycamore Sand Formation (Ksy) provide the majority of the source water to Krause Springs and support base flow in Camp Creek a tributary of Little Cypress Creek. The Sycamore Sand is also known as the Lower Trinity Aquifer. Accordingly, recharge to the Lower Trinity, and pumping within the springshed directly influences Krause Springs. The Sycamore Sand overlays the Pennsylvanian Marble Falls Limestone (Cmf), which may also provide additional water to the Lower Trinity and springs, or simply may act as a local conduit from the Sycamore (Ksy) and alluvium (Qal) to the creek. Alluvial deposits in Little Cypress Creek to the southwest of the park area may also be hydraulically connected to the Sycamore Sand (Ksy).

NEXT STEPS

This study provides critical data regarding the hydrogeology of Krause Springs and a portion of Little Cypress Creek and provides an initial conceptual model of the springshed. However, to fully characterize the system additional hydrogeologic studies could be performed on the broader watershed. Suggested next steps include: 1) Geologic characterization including geologic mapping, additional borings including cuttings and core, and geophysical logging coupled with the collection of cuttings in area wells. 2) Hydrogeologic characterization including: monitor wells (automated recorders) in various aquifer units, weather station(s), and surface flow gauges, surface geophysical surveys, targeted dye tracing along losing (recharge) reaches of the creek, additional synoptic water levels, and streamflow (gain-loss) data, and geochemistry.

Combined, these data should further delineate the source water or springshed area. Ultimately, all this information could culminate in the development of a conceptual and numerical groundwater flow model.

REFERENCES

- Barnes, V.E., 1982, Geology of the Spicewood Quadrangle, Blanco, Burnet and Travis Counties. Bureau of Economic Geology, University of Texas at Austin Geologic Quadrangle Map No. 50.
- Brune, G. (1981). Springs of Texas, Vol. 1. Branch Smith, Inc. Fort Worth, Texas.
- Chowdhury, A.H. (2009), A Comparison of the Old and New Groundwater Availability Models for the Hill Country Portion of the Edwards and Trinity Aquifers, Analysis Paper 09-20, Texas Water Development Board
- Golden Software (2020) Accessed December 10, 2020. <https://support.goldensoftware.com/hc/en-us/articles/115003101648-What-is-a-piper-plot-trilinear-diagram->
- Hill, R.T., 1891, Geography and Geology of the Black and Grand Prairies, Texas. Twenty-First Annual Report of the United States Geological Survey.
- Hunt, B.B., Cockrell, L.P., Gary, R.H., Vay, J.M., Kennedy, V., Smith, B.A., Camp, J.P., 2020, Hydrogeologic of Southwest Travis County, Central Texas: Barton Springs/Edwards Aquifer Conservation District Report of Investigations 2020-0429, April 2020.
- Ikard, S., Teeple, A., Payne, J., & Casarez, I. (2019). The Sources of Groundwater to the Mineral Springs of Spicewood, Texas, Investigated with Electrical Geophysical Methods. Accessed September 18, 2020. https://www.researchgate.net/publication/335947183_The_Sources_of_Groundwater_to_the_Mineral_Springs_of_Spicewood_Texas_Investigated_with_Electrical_Geophysical_Methods
- Krause Springs – About. (2020). Accessed September 18, 2020. <https://krausesprings.net/about>
- Lower Colorado River Authority. (2008). Little Cypress Creek Watershed. Accessed September 18, 2020. <https://maps.lcra.org/default.aspx?MapType=Watershed%20Posters>
- National Land Cover Database 2011 (NLCD2011). (2011). Multi-Resolution Land Characteristics (MRLC) Consortium. Accessed September 18, 2020. <https://www.mrlc.gov/>
- Texas Parks and Wildlife. (n.d.). Texas Watershed Viewer. Accessed September 18, 2020. <https://tpwd.maps.arcgis.com/apps/Viewer/index.html?appid=2b3604bf9ced441a98c500763b8b1048>
- United States Census Staff. (2011). 2011 U.S. Census. United States Census Bureau. Accessed September 18, 2020. <https://www.census.gov/>
- United States Geological Survey. (2007). Geologic Database of Texas – Pocket Texas Geology. Accessed September 18, 2020. <https://txpub.usgs.gov/txgeology/>
- Woodruff, C.M. and Collins, E.W., 2016, Geologic Map of the Upper Lake Travis Area, Texas, Bureau of Economic Geology, University of Texas at Austin, Miscellaneous Map No. 52.

APPENDIX A: LAND COVER DESCRIPTIONS

Class\ Value	Classification Description
Water	
11	Open Water- areas of open water, generally with less than 25% cover of vegetation or soil.
12	Perennial Ice/Snow- areas characterized by a perennial cover of ice and/or snow, generally greater than 25% of total cover.
Developed	
21	Developed, Open Space- areas with a mixture of some constructed materials, but mostly vegetation in the form of lawn grasses. Impervious surfaces account for less than 20% of total cover. These areas most commonly include large-lot single-family housing units, parks, golf courses, and vegetation planted in developed settings for recreation, erosion control, or aesthetic purposes.
22	Developed, Low Intensity- areas with a mixture of constructed materials and vegetation. Impervious surfaces account for 20% to 49% percent of total cover. These areas most commonly include single-family housing units.
23	Developed, Medium Intensity- areas with a mixture of constructed materials and vegetation. Impervious surfaces account for 50% to 79% of the total cover. These areas most commonly include single-family housing units.
24	Developed, High Intensity- areas with a mixture of constructed materials and vegetation. Impervious surfaces account for 80% to 100% of the total cover. Examples include apartment buildings, office buildings, and commercial districts. Impervious surfaces account for 80% to 100% of the total cover.
Barren	
31	Barren Land (Rock/Sand/Clay) - areas of bedrock, desert pavement, scarps, talus, slides, volcanic material, glacial debris, sand dunes, strip mines, gravel pits and other accumulations of earthen material. Generally, vegetation accounts for less than 15% of total cover.
Forest	
41	Deciduous Forest- areas dominated by trees generally greater than 5 meters tall, and greater than 20% of total vegetation cover. More than 75% of the tree species shed foliage simultaneously in response to seasonal change.
42	Evergreen Forest- areas dominated by trees generally greater than 5 meters tall, and greater than 20% of total vegetation cover. More than 75% of the tree species maintain their leaves all year. Canopy is never without green foliage.
43	Mixed Forest- areas dominated by trees generally greater than 5 meters tall, and greater than 20% of total vegetation cover. Neither deciduous nor evergreen species are greater than 75% of total tree cover.
Shrubland	
51	Dwarf Scrub- Alaska only areas dominated by shrubs less than 20 centimeters tall with shrub canopy typically greater than 20% of total vegetation. This type is often co-associated with grasses, sedges, herbs, and non-vascular vegetation.
52	Shrub/Scrub- areas dominated by shrubs; less than 5 meters tall with shrub canopy typically greater than 20% of total vegetation. This class includes true shrubs, young trees in an early successional stage or trees stunted from environmental conditions.
Herbaceous	
71	Grassland/Herbaceous- areas dominated by graminoid or herbaceous vegetation, generally greater than 80% of total vegetation. These areas are not subject to intensive management such as tilling, but can be utilized for grazing.
72	Sedge/Herbaceous- Alaska only areas dominated by sedges and forbs, generally greater than 80% of total vegetation. This type can occur with significant other grasses or other grass like plants, and includes sedge tundra, and sedge tussock tundra.
73	Lichens- Alaska only areas dominated by fruticose or foliose lichens generally greater than 80% of total vegetation.
74	Moss- Alaska only areas dominated by mosses, generally greater than 80% of total vegetation.
Planted/Cultivated	
81	Pasture/Hay- areas of grasses, legumes, or grass-legume mixtures planted for livestock grazing or the production of seed or hay crops, typically on a perennial cycle. Pasture/hay vegetation accounts for greater than 20% of total vegetation.
82	Cultivated Crops - areas used for the production of annual crops, such as corn, soybeans, vegetables, tobacco, and cotton, and also perennial woody crops such as orchards and vineyards. Crop vegetation accounts for greater than 20% of total vegetation. This class also includes all land being actively tilled.
Wetlands	
90	Woody Wetlands- areas where forest or shrubland vegetation accounts for greater than 20% of vegetative cover and the soil or substrate is periodically saturated with or covered with water.
95	Emergent Herbaceous Wetlands- Areas where perennial herbaceous vegetation accounts for greater than 80% of vegetative cover and the soil or substrate is periodically saturated with or covered with water.

APPENDIX B: STATE WELL REPORTS

STATE OF TEXAS WELL REPORT for Tracking #144753			
Owner:	Grelle Resource Area c/o LCRA	Owner Well #:	Grelle#5
Address:	Mail Stop L412; PO Box 220 Austin, TX 78767	Grid #:	57-39-3
Well Location:	Krause Springs Road Spicewood, TX 78669	Latitude:	30° 28' 35" N
Well County:	Burnet	Longitude:	098° 08' 34" W
		Elevation:	802 ft. above sea level
Plugged Within 48 Hours			
This well has been plugged		<u>Plugging Report Tracking #120912</u>	
Type of Work:	New Well	Proposed Use:	Domestic

Drilling Start Date: **5/30/2008** Drilling End Date: **5/30/2008**

	<i>Diameter (in.)</i>	<i>Top Depth (ft.)</i>	<i>Bottom Depth (ft.)</i>
Borehole:	9	0	140

Drilling Method: **Air Hammer**

Borehole Completion: **Unknown**

Annular Seal Data: **No Data**

Seal Method: **Not Applicable**

Sealed By: **Unknown**

Distance to Property Line (ft.): **No Data**

Distance to Septic Field or other concentrated contamination (ft.): **No Data**

Distance to Septic Tank (ft.): **No Data**

Method of Verification: **No Data**

Surface Completion: **Unknown**

Water Level: **No Data**

Packers: **No Data**

Type of Pump: **No Data**

Well Tests: **No Test Data Specified**

	<i>Top Depth (ft.)</i>	<i>Bottom Depth (ft.)</i>
Plug Information:		
0-10 6 portland		
10-140 back fill cutting		

Water Quality:

Strata Depth (ft.)	Water Type
No Data	No Data

Chemical Analysis Made: **No**

Did the driller knowingly penetrate any strata which contained injurious constituents?: **No**

Certification Data: The driller certified that the driller drilled this well (or the well was drilled under the driller's direct supervision) and that each and all of the statements herein are true and correct. The driller understood that failure to complete the required items will result in the report(s) being returned for completion and resubmittal.

Company Information: **Whisenant & Lyle Water Services Inc**
P.O. Box 525
Dripping Springs, TX 78620

Driller Name: **Martin D. Lingle Jr.** License Number: **54813**

Comments: **No Data**

Lithology:
DESCRIPTION & COLOR OF FORMATION MATERIAL

Casing:
BLANK PIPE & WELL SCREEN DATA

Top (ft.)	Bottom (ft.)	Description
0	1	topsoil
1	2	caliche
2	3	red clay
3	5	clay
5	23	red clay red sandstone
23	27	brown limestone
27	32	void
32	55	white limestone hard
55	56	light gray limestone
56	62	light brown limestone
62	67	green/brown limestone
67	95	brown limestone
95	98	green/gray limestone
98	110	gray limestone
110	140	dark gray limestone

Dia. (in.)	New/Used	Type	Setting From/To (ft.)
No Data			

IMPORTANT NOTICE FOR PERSONS HAVING WELLS DRILLED CONCERNING CONFIDENTIALITY

TEX. OCC. CODE Title 12, Chapter 1901.251, authorizes the owner (owner or the person for whom the well was drilled) to keep information in Well Reports confidential. The Department shall hold the contents of the well log confidential and not a matter of public record if it receives, by certified mail, a written request to do so from the owner.

Please include the report's Tracking Number on your written request.

Texas Department of Licensing and Regulation
P.O. Box 12157
Austin, TX 78711
(512) 334-5540

STATE OF TEXAS WELL REPORT for Tracking #168575

Owner: Grelle Resource Area c/o LCRA	Owner Well #: Grelle#6
Address: Mail Stop L412; PO Box 220 Austin, TX 78767	Grid #: 57-39-3
Well Location: Krause Springs Road Spicewood, TX 78669	Latitude: 30° 28' 35" N
Well County: Burnet	Longitude: 098° 08' 35" W
	Elevation: 759 ft. above sea level
Type of Work: New Well	
Proposed Use: Domestic	

Drilling Start Date: **5/30/2008** Drilling End Date: **1/30/2009**

	<i>Diameter (in.)</i>	<i>Top Depth (ft.)</i>	<i>Bottom Depth (ft.)</i>
Borehole:	12.25	0	140

Drilling Method: **Air Rotary**

Borehole Completion: **Filter Packed**

	<i>Top Depth (ft.)</i>	<i>Bottom Depth (ft.)</i>	<i>Filter Material</i>	<i>Size</i>
Filter Pack Intervals:	38	140	Gravel	

	<i>Top Depth (ft.)</i>	<i>Bottom Depth (ft.)</i>	<i>Description (number of sacks & material)</i>
Annular Seal Data:	0	40	3bensl19port1nd

Seal Method: **PRESSURE GROUT**

Sealed By: **Driller**

Distance to Property Line (ft.): **No Data**

Distance to Septic Field or other concentrated contamination (ft.): **No Data**

Distance to Septic Tank (ft.): **No Data**

Method of Verification: **No Data**

Surface Completion: **Surface Sleeve Installed**

Water Level: **40 ft. below land surface on 2008-07-01** Measurement Method: **Unknown**

Packers: **No Data**

Type of Pump: **Submersible** Pump Depth (ft.): **120**

Well Tests: **Pump** Yield: **LESS1/2 GPM**

Water Quality:

Strata Depth (ft.)	Water Type
40-140	GOOD

Chemical Analysis Made: **No**

Did the driller knowingly penetrate any strata which contained injurious constituents?: **No**

Certification Data: The driller certified that the driller drilled this well (or the well was drilled under the driller's direct supervision) and that each and all of the statements herein are true and correct. The driller understood that failure to complete the required items will result in the report(s) being returned for completion and resubmittal.

Company Information: **WHISENANT & LYLE WATER SERVICES**

**P.O. BOX 525
DRIPPING SPRINGS, TX 78620**

Driller Name: **MARTIN D. LINGLE**

License Number: **54813**

Apprentice Name: **GARY S. TUCKER**

Apprentice Number: **58291**

Comments: **No Data**

Lithology:
DESCRIPTION & COLOR OF FORMATION MATERIAL

Top (ft.)	Bottom (ft.)	Description
0	1	topsoil
1	30	red clay/red sandstone
30	38	brown limestone
38	50	white limestone hard
50	62	brown limestone
62	78	gray limestone
78	83	dark gray limestone
83	94	green limestone
94	140	gray limestone

Casing:
BLANK PIPE & WELL SCREEN DATA

Dia. (in.)	New/Used	Type	Setting From/To (ft.)
4.5	N	PVC-SDR 171B	+2'-40'
4.5	N	PVC-17 SLOTTED.085	40'-140'

IMPORTANT NOTICE FOR PERSONS HAVING WELLS DRILLED CONCERNING CONFIDENTIALITY

TEX. OCC. CODE Title 12, Chapter 1901.251, authorizes the owner (owner or the person for whom the well was drilled) to keep information in Well Reports confidential. The Department shall hold the contents of the well log confidential and not a matter of public record if it receives, by certified mail, a written request to do so from the owner.

Please include the report's Tracking Number on your written request.

Texas Department of Licensing and Regulation
P.O. Box 12157
Austin, TX 78711
(512) 334-5540

STATE OF TEXAS WELL REPORT for Tracking #180663

Owner: David Krause	Owner Well #: No Data
Address: 2107 Whispering Dr. Round Rock, TX 78664	Grid #: 57-39-3
Well Location: Krause Springs Spicewood, TX 78669	Latitude: 30° 28' 42" N
Well County: Burnet	Longitude: 098° 09' 01" W
	Elevation: No Data

****Plugged Within 48 Hours****

****This well has been plugged****

Plugging Report Tracking #124282

Type of Work: New Well	Proposed Use: Domestic
-------------------------------	-------------------------------

Drilling Start Date: **5/13/2009** Drilling End Date: **5/13/2009**

	<i>Diameter (in.)</i>	<i>Top Depth (ft.)</i>	<i>Bottom Depth (ft.)</i>
Borehole:	6	0	90

Drilling Method: **Air Hammer**

Borehole Completion: **Plugged**

	<i>Top Depth (ft.)</i>	<i>Bottom Depth (ft.)</i>	<i>Description (number of sacks & material)</i>
Annular Seal Data:	0	15	1 cement

Seal Method: **gravity cemented**

Distance to Property Line (ft.): **>100**

Sealed By: **Driller**

Distance to Septic Field or other concentrated contamination (ft.): **> 150**

Distance to Septic Tank (ft.): **No Data**

Method of Verification: **estimated**

Surface Completion: **Unknown**

Water Level: **No Data**

Packers: **none**

Type of Pump: **No Data**

Well Tests: **Jetted** **Yield: 0 GPM**

	<i>Top Depth (ft.)</i>	<i>Bottom Depth (ft.)</i>
Plug Information:	no casing 0 - 15 cement 1 sack	

Water Quality:

Strata Depth (ft.)	Water Type
No Data	No Data

Chemical Analysis Made: **No**

Did the driller knowingly penetrate any strata which contained injurious constituents?: **No**

Certification Data: The driller certified that the driller drilled this well (or the well was drilled under the driller's direct supervision) and that each and all of the statements herein are true and correct. The driller understood that failure to complete the required items will result in the report(s) being returned for completion and resubmittal.

Company Information: **L & L Drilling Co.**
P.O. Box 217
Hye, TX 78635

Driller Name: **Gregory A. Smith**

License Number: **1595**

Apprentice Name: **Lynette Smith**

Apprentice Number: **56980**

Comments: **No Data**

Lithology:
DESCRIPTION & COLOR OF FORMATION MATERIAL

Casing:
BLANK PIPE & WELL SCREEN DATA

Top (ft.)	Bottom (ft.)	Description
0	1	black topsoil
1	39	gravel, sand & brown clay
39	54	yellow clay & brown limestone
54	90	brown limestone

Dia. (in.)	New/Used	Type	Setting From/To (ft.)
no casing			

IMPORTANT NOTICE FOR PERSONS HAVING WELLS DRILLED CONCERNING CONFIDENTIALITY

TEX. OCC. CODE Title 12, Chapter 1901.251, authorizes the owner (owner or the person for whom the well was drilled) to keep information in Well Reports confidential. The Department shall hold the contents of the well log confidential and not a matter of public record if it receives, by certified mail, a written request to do so from the owner.

Please include the report's Tracking Number on your written request.

Texas Department of Licensing and Regulation
P.O. Box 12157
Austin, TX 78711
(512) 334-5540

STATE OF TEXAS WELL REPORT for Tracking #180666

Owner: David Krause	Owner Well #: No Data
Address: 2107 Whispering Dr. Round Rock, TX 78664	Grid #: 57-39-3
Well Location: Krause Springs Spicewood, TX 78669	Latitude: 30° 28' 40" N
Well County: Burnet	Longitude: 098° 09' 05" W
	Elevation: No Data

****Plugged Within 48 Hours****

****This well has been plugged****

Plugging Report Tracking #124283

Type of Work: New Well	Proposed Use: Domestic
-------------------------------	-------------------------------

Drilling Start Date: **5/13/2009** Drilling End Date: **5/13/2009**

	<i>Diameter (in.)</i>	<i>Top Depth (ft.)</i>	<i>Bottom Depth (ft.)</i>
Borehole:	6	0	90

Drilling Method: **Air Hammer**

Borehole Completion: **Plugged**

	<i>Top Depth (ft.)</i>	<i>Bottom Depth (ft.)</i>	<i>Description (number of sacks & material)</i>
Annular Seal Data:	0	15	1 cement

Seal Method: **gravity cemented**

Distance to Property Line (ft.): **>100**

Sealed By: **Driller**

Distance to Septic Field or other concentrated contamination (ft.): **> 150**

Distance to Septic Tank (ft.): **No Data**

Method of Verification: **estimated**

Surface Completion: **Unknown**

Water Level: **No Data**

Packers: **none**

Type of Pump: **No Data**

Well Tests: **Jetted** **Yield: 0 GPM**

	<i>Top Depth (ft.)</i>	<i>Bottom Depth (ft.)</i>
Plug Information:	no casing 0 - 15 cement 1 sack	

Water Quality:

<i>Strata Depth (ft.)</i>	<i>Water Type</i>
No Data	No Data

Chemical Analysis Made: **No**

Did the driller knowingly penetrate any strata which contained injurious constituents?: **No**

Certification Data: The driller certified that the driller drilled this well (or the well was drilled under the driller's direct supervision) and that each and all of the statements herein are true and correct. The driller understood that failure to complete the required items will result in the report(s) being returned for completion and resubmittal.

Company Information: **L & L Drilling Co.**
P.O. Box 217
Hye, TX 78635

Driller Name: **Gregory A. Smith**

License Number: **1595**

Apprentice Name: **Lynette Smith**

Apprentice Number: **56980**

Comments: **No Data**

Lithology:
DESCRIPTION & COLOR OF FORMATION MATERIAL

Casing:
BLANK PIPE & WELL SCREEN DATA

<i>Top (ft.)</i>	<i>Bottom (ft.)</i>	<i>Description</i>
0	1	black topsoil
1	27	brown clay & white & yellow limestone
27	30	red clay & white limestone
30	44	gray limestone
44	45	red clay & gray limestone
45	90	gray limestone

<i>Dia. (in.)</i>	<i>New/Used</i>	<i>Type</i>	<i>Setting From/To (ft.)</i>
no casing			

IMPORTANT NOTICE FOR PERSONS HAVING WELLS DRILLED CONCERNING CONFIDENTIALITY

TEX. OCC. CODE Title 12, Chapter 1901.251, authorizes the owner (owner or the person for whom the well was drilled) to keep information in Well Reports confidential. The Department shall hold the contents of the well log confidential and not a matter of public record if it receives, by certified mail, a written request to do so from the owner.

Please include the report's Tracking Number on your written request.

Texas Department of Licensing and Regulation
P.O. Box 12157
Austin, TX 78711
(512) 334-5540

STATE OF TEXAS WELL REPORT for Tracking #180668

Owner: David Krause	Owner Well #: No Data
Address: 2107 Whispering Dr. Round Rock, TX 78664	Grid #: 57-39-3
Well Location: Krause Springs Spicewood, TX 78669	Latitude: 30° 28' 42" N
Well County: Burnet	Longitude: 098° 09' 06" W
	Elevation: No Data

****Plugged Within 48 Hours****

****This well has been plugged****

Plugging Report Tracking #124284

Type of Work: **New Well**

Proposed Use: **Domestic**

Drilling Start Date: **5/14/2009**

Drilling End Date: **5/14/2009**

	<i>Diameter (in.)</i>	<i>Top Depth (ft.)</i>	<i>Bottom Depth (ft.)</i>
Borehole:	6	0	105

Drilling Method: **Air Hammer**

Borehole Completion: **Plugged**

	<i>Top Depth (ft.)</i>	<i>Bottom Depth (ft.)</i>	<i>Description (number of sacks & material)</i>
Annular Seal Data:	0	15	1 cement

Seal Method: **gravity cemented**

Distance to Property Line (ft.): **>100**

Sealed By: **Driller**

Distance to Septic Field or other concentrated contamination (ft.): **> 150**

Distance to Septic Tank (ft.): **No Data**

Method of Verification: **estimated**

Surface Completion: **Unknown**

Water Level: **No Data**

Packers: **none**

Type of Pump: **No Data**

Well Tests: **Jetted** **Yield: 0 GPM**

	<i>Top Depth (ft.)</i>	<i>Bottom Depth (ft.)</i>
Plug Information:	no casing 0 - 15 cement 1 sack	

Water Quality:

<i>Strata Depth (ft.)</i>	<i>Water Type</i>
No Data	No Data

Chemical Analysis Made: **No**

Did the driller knowingly penetrate any strata which contained injurious constituents?: **No**

Certification Data: The driller certified that the driller drilled this well (or the well was drilled under the driller's direct supervision) and that each and all of the statements herein are true and correct. The driller understood that failure to complete the required items will result in the report(s) being returned for completion and resubmittal.

Company Information: **L & L Drilling Co.**
P.O. Box 217
Hye, TX 78635

Driller Name: **Gregory A. Smith**

License Number: **1595**

Apprentice Name: **Lynette Smith**

Apprentice Number: **56980**

Comments: **No Data**

Lithology:
DESCRIPTION & COLOR OF FORMATION MATERIAL

Casing:
BLANK PIPE & WELL SCREEN DATA

<i>Top (ft.)</i>	<i>Bottom (ft.)</i>	<i>Description</i>
0	1	black topsoil
1	12	white limestone & yellow clay
12	16	yellow clay & white, yellow & red limestone
16	21	yellow clay & yellow limestone
21	30	red clay & yellow & white limestone
30	32	yellow clay & white limestone
32	37	gray limestone
37	39	red & yellow clay & white limestone
39	44	light brown limestone
44	46	gray clay
46	105	light brown & gray limestone

<i>Dia. (in.)</i>	<i>New/Used</i>	<i>Type</i>	<i>Setting From/To (ft.)</i>
no casing			

IMPORTANT NOTICE FOR PERSONS HAVING WELLS DRILLED CONCERNING CONFIDENTIALITY

TEX. OCC. CODE Title 12, Chapter 1901.251, authorizes the owner (owner or the person for whom the well was drilled) to keep information in Well Reports confidential. The Department shall hold the contents of the well log confidential and not a matter of public record if it receives, by certified mail, a written request to do so from the owner.

Please include the report's Tracking Number on your written request.

**Texas Department of Licensing and Regulation
P.O. Box 12157
Austin, TX 78711
(512) 334-5540**

STATE OF TEXAS WELL REPORT for Tracking #180671

Owner: David Krause	Owner Well #: No Data
Address: 2107 Whispering Dr. Round Rock, TX 78664	Grid #: 57-39-3
Well Location: Krause Springs Spicewood, TX 78669	Latitude: 30° 28' 44" N
Well County: Burnet	Longitude: 098° 09' 01" W
	Elevation: No Data

****Plugged Within 48 Hours****

****This well has been plugged****

Plugging Report Tracking #124285

Type of Work: New Well	Proposed Use: Domestic
-------------------------------	-------------------------------

Drilling Start Date: **5/14/2009** Drilling End Date: **5/14/2009**

	<i>Diameter (in.)</i>	<i>Top Depth (ft.)</i>	<i>Bottom Depth (ft.)</i>
Borehole:	6	0	105

Drilling Method: **Air Hammer**

Borehole Completion: **Plugged**

	<i>Top Depth (ft.)</i>	<i>Bottom Depth (ft.)</i>	<i>Description (number of sacks & material)</i>
Annular Seal Data:	0	15	1 cement

Seal Method: **gravity cemented**

Distance to Property Line (ft.): **>100**

Sealed By: **Driller**

Distance to Septic Field or other concentrated contamination (ft.): **> 150**

Distance to Septic Tank (ft.): **No Data**

Method of Verification: **estimated**

Surface Completion: **Unknown**

Water Level: **No Data**

Packers: **none**

Type of Pump: **No Data**

Well Tests: **Jetted** **Yield: 0 GPM**

	<i>Top Depth (ft.)</i>	<i>Bottom Depth (ft.)</i>
Plug Information:	no casing 0 - 15 cement 1 sack	

Water Quality:

Strata Depth (ft.)	Water Type
No Data	No Data

Chemical Analysis Made: **No**

Did the driller knowingly penetrate any strata which contained injurious constituents?: **No**

Certification Data: The driller certified that the driller drilled this well (or the well was drilled under the driller's direct supervision) and that each and all of the statements herein are true and correct. The driller understood that failure to complete the required items will result in the report(s) being returned for completion and resubmittal.

Company Information: **L & L Drilling Co.**
P.O. Box 217
Hye, TX 78635

Driller Name: **Gregory A. Smith**

License Number: **1595**

Apprentice Name: **Lynette Smith**

Apprentice Number: **56980**

Comments: **No Data**

Lithology:
DESCRIPTION & COLOR OF FORMATION MATERIAL

Casing:
BLANK PIPE & WELL SCREEN DATA

Top (ft.)	Bottom (ft.)	Description
0	1	black topsoil
1	11	red clay & white limestone
11	24	white & yellow limestone
24	26	yellow clay & white & yellow limestone
26	35	gray limestone
35	38	red clay & white limestone
38	45	gray limestone
45	53	gray limestone
53	105	brown limestone

Dia. (in.)	New/Used	Type	Setting From/To (ft.)
no casing			

IMPORTANT NOTICE FOR PERSONS HAVING WELLS DRILLED CONCERNING CONFIDENTIALITY

TEX. OCC. CODE Title 12, Chapter 1901.251, authorizes the owner (owner or the person for whom the well was drilled) to keep information in Well Reports confidential. The Department shall hold the contents of the well log confidential and not a matter of public record if it receives, by certified mail, a written request to do so from the owner.

Please include the report's Tracking Number on your written request.

Texas Department of Licensing and Regulation
P.O. Box 12157
Austin, TX 78711
(512) 334-5540

STATE OF TEXAS WELL REPORT for Tracking #180677

Owner: David Krause	Owner Well #: No Data
Address: 2107 Whispering Dr. Round Rock, TX 78664	Grid #: 57-39-3
Well Location: Krause Springs Spicewood, TX 78669	Latitude: 30° 28' 41" N
Well County: Burnet	Longitude: 098° 09' 00" W
Elevation: No Data	
Type of Work: New Well	Proposed Use: Domestic

Drilling Start Date: **5/14/2009** Drilling End Date: **5/15/2009**

	Diameter (in.)	Top Depth (ft.)	Bottom Depth (ft.)
Borehole:	13	0	30
	8.62	30	43
	6	43	105

Drilling Method: **Air Hammer**

Borehole Completion: **Filter Packed; Straight Wall**

	Top Depth (ft.)	Bottom Depth (ft.)	Filter Material	Size
Filter Pack Intervals:	10	43	Gravel	#4 pea

	Top Depth (ft.)	Bottom Depth (ft.)	Description (number of sacks & material)
Annular Seal Data:	0	20	4 cement

Seal Method: **gravity cemented**

Distance to Property Line (ft.): **600**

Sealed By: **Driller**

Distance to Septic Field or other concentrated contamination (ft.): **1000**

Distance to Septic Tank (ft.): **No Data**

Method of Verification: **estimated**

Surface Completion: **Pitless Adapter Used**

Water Level: **28 ft. below land surface on 2009-05-15** Measurement Method: **Unknown**

Packers: **none**

Type of Pump: **No Data**

Well Tests: **Jetted** **Yield: 30 GPM**

Water Quality:

Strata Depth (ft.)	Water Type
27	500 TDS, 17 grains hardness

Chemical Analysis Made: **Yes**

Did the driller knowingly penetrate any strata which contained injurious constituents?: **No**

Certification Data: The driller certified that the driller drilled this well (or the well was drilled under the driller's direct supervision) and that each and all of the statements herein are true and correct. The driller understood that failure to complete the required items will result in the report(s) being returned for completion and resubmittal.

Company Information: **L & L Drilling Co.**
P.O. Box 217
Hye, TX 78635

Driller Name: **Gregory A. Smith**

License Number: **1595**

Apprentice Name: **Lynette Smith**

Apprentice Number: **56980**

Comments: **No Data**

Lithology:
DESCRIPTION & COLOR OF FORMATION MATERIAL

Casing:
BLANK PIPE & WELL SCREEN DATA

Top (ft.)	Bottom (ft.)	Description
0	1	black topsoil
1	9	large gravel & brown clay
9	14	brown sand & gravel
14	33	brown clay & gravel
27	38	water 30 gpm
33	37	gray limestone
37	40	red clay
40	60	brown & gray limestone
60	61	black & dark gray limestone
61	105	light brown limestone

Dia. (in.)	New/Used	Type	Setting From/To (ft.)
6	new	steel solid	0 - 27 0.188
6	new	steel slotted	27 - 38 0.188
6	new	steel solid	38 - 43 0.188

IMPORTANT NOTICE FOR PERSONS HAVING WELLS DRILLED CONCERNING CONFIDENTIALITY

TEX. OCC. CODE Title 12, Chapter 1901.251, authorizes the owner (owner or the person for whom the well was drilled) to keep information in Well Reports confidential. The Department shall hold the contents of the well log confidential and not a matter of public record if it receives, by certified mail, a written request to do so from the owner.

Please include the report's Tracking Number on your written request.

Texas Department of Licensing and Regulation
P.O. Box 12157
Austin, TX 78711
(512) 334-5540

STATE OF TEXAS WELL REPORT for Tracking #188613

Owner: PERMELIA YEAGER	Owner Well #: 001
Address: PO BOX 5 SPICEWOOD, TX 78669	Grid #: 57-39-3
Well Location: 800 SPUR 191 SPICEWOOD, TX 78669	Latitude: 30° 28' 24" N
Well County: Burnet	Longitude: 098° 09' 24" W
	Elevation: 791 ft. above sea level
Type of Work: New Well	
Proposed Use: Domestic	

Drilling Start Date: **5/29/2009** Drilling End Date: **6/1/2009**

	Diameter (in.)	Top Depth (ft.)	Bottom Depth (ft.)
Borehole:	10	0	12
	6.75	12	200

Drilling Method: **Air Hammer**

Borehole Completion: **Filter Packed**

	Top Depth (ft.)	Bottom Depth (ft.)	Filter Material	Size
Filter Pack Intervals:	8	30	Gravel	3/8"

	Top Depth (ft.)	Bottom Depth (ft.)	Description (number of sacks & material)
Annular Seal Data:	0	8	13 CEMENT

Seal Method: **SLURRIED & POURED**

Distance to Property Line (ft.): **No Data**

Sealed By: **CESAR RAMOS**

Distance to Septic Field or other concentrated contamination (ft.): **500**

Distance to Septic Tank (ft.): **No Data**

Method of Verification: **STEEL TAPE**

Surface Completion: **Surface Sleeve Installed**

Water Level: **22 ft. below land surface on 2009-06-02** Measurement Method: **Unknown**

Packers: **NEOPRENE 30**

Type of Pump: **Submersible** Pump Depth (ft.): **60**

Well Tests: **Jetted** Yield: **2 GPM**

Water Quality:

Strata Depth (ft.)	Water Type
No Data	No Data

Chemical Analysis Made: **No**

Did the driller knowingly penetrate any strata which contained injurious constituents?: **No**

Certification Data: The driller certified that the driller drilled this well (or the well was drilled under the driller's direct supervision) and that each and all of the statements herein are true and correct. The driller understood that failure to complete the required items will result in the report(s) being returned for completion and resubmittal.

Company Information: **BEE CAVE DRILLING INC**
185 ANGELFIRE DR
DRIPPING SPRINGS, TX 78620

Driller Name: **BOBBY ROBERTS**

License Number: **54416**

Apprentice Name: **CESAR RAMOS**

Apprentice Number: **57534**

Comments: **No Data**

Lithology:
DESCRIPTION & COLOR OF FORMATION MATERIAL

Casing:
BLANK PIPE & WELL SCREEN DATA

Top (ft.)	Bottom (ft.)	Description
0	8	TOPSOIL
8	20	SAND W/B 2 GPM
20	150	GRANITE
150	200	BLACK ROCK

Dia. (in.)	New/Used	Type	Setting From/To (ft.)
6	NEW	PLASTIC	0 - 10
6	NEW	SCREEN MFG	10 - 30 .050

IMPORTANT NOTICE FOR PERSONS HAVING WELLS DRILLED CONCERNING CONFIDENTIALITY

TEX. OCC. CODE Title 12, Chapter 1901.251, authorizes the owner (owner or the person for whom the well was drilled) to keep information in Well Reports confidential. The Department shall hold the contents of the well log confidential and not a matter of public record if it receives, by certified mail, a written request to do so from the owner.

Please include the report's Tracking Number on your written request.

Texas Department of Licensing and Regulation
P.O. Box 12157
Austin, TX 78711
(512) 334-5540

Water Quality:

<i>Strata Depth (ft.)</i>	<i>Water Type</i>
22	400 TDS, 19 grains hardness

Chemical Analysis Made: **Yes**

Did the driller knowingly penetrate any strata which contained injurious constituents?: **No**

Certification Data: The driller certified that the driller drilled this well (or the well was drilled under the driller's direct supervision) and that each and all of the statements herein are true and correct. The driller understood that failure to complete the required items will result in the report(s) being returned for completion and resubmittal.

Company Information: **L & L Drilling Co.**
P.O. Box 217
Hye, TX 78635

Driller Name: **Gregory A. Smith**

License Number: **1595**

Apprentice Name: **Lynette Smith**

Apprentice Number: **56980**

Comments: **No Data**

Lithology:
DESCRIPTION & COLOR OF FORMATION MATERIAL

Casing:
BLANK PIPE & WELL SCREEN DATA

<i>Top (ft.)</i>	<i>Bottom (ft.)</i>	<i>Description</i>
0	2	topsoil
2	15	brown clay
15	30	brown sand
22	34	water 75 gpm
30	34	brown gravel & sand
34	41	red, brown & yellow limestone
41	68	yellow shale & clay
68	105	oily gray shale

<i>Dia. (in.)</i>	<i>New/Used</i>	<i>Type</i>	<i>Setting From/To (ft.)</i>
5	new	plastic solid	0 - 22 0.265
5	new	plastic slotted	22 - 41 0.265
5	new	plastic solid	41 - 105 0.265

IMPORTANT NOTICE FOR PERSONS HAVING WELLS DRILLED CONCERNING CONFIDENTIALITY

TEX. OCC. CODE Title 12, Chapter 1901.251, authorizes the owner (owner or the person for whom the well was drilled) to keep information in Well Reports confidential. The Department shall hold the contents of the well log confidential and not a matter of public record if it receives, by certified mail, a written request to do so from the owner.

Please include the report's Tracking Number on your written request.

Texas Department of Licensing and Regulation
P.O. Box 12157
Austin, TX 78711
(512) 334-5540

STATE OF TEXAS WELL REPORT for Tracking #283152

Owner: Jerry Parish	Owner Well #: No Data
Address: 143A 4th St. Hill AFB, UT 84056	Grid #: 57-39-3
Well Location: CR 404 Spicewood, TX 78669	Latitude: 30° 28' 19" N
Well County: Burnet	Longitude: 098° 08' 49" W
	Elevation: No Data
Type of Work: New Well	
Proposed Use: Domestic	

Drilling Start Date: **3/14/2012** Drilling End Date: **3/14/2012**

	<i>Diameter (in.)</i>	<i>Top Depth (ft.)</i>	<i>Bottom Depth (ft.)</i>
Borehole:	8.62	0	144

Drilling Method: **Air Hammer**

Borehole Completion: **Filter Packed**

	<i>Top Depth (ft.)</i>	<i>Bottom Depth (ft.)</i>	<i>Filter Material</i>	<i>Size</i>
Filter Pack Intervals:	30	144	Gravel	pea

	<i>Top Depth (ft.)</i>	<i>Bottom Depth (ft.)</i>	<i>Description (number of sacks & material)</i>
Annular Seal Data:	1	3	0.5 cement
	3	30	3 bentonite

Seal Method: **gravity grouted**

Distance to Property Line (ft.): **53**

Sealed By: **Driller**

Distance to Septic Field or other concentrated contamination (ft.): **115**

Distance to Septic Tank (ft.): **No Data**

Method of Verification: **estimated**

Surface Completion: **Pitless Adapter Used**

Water Level: **17 ft. below land surface on 2012-03-14** Measurement Method: **Unknown**

Packers: **none**

Type of Pump: **No Data**

Well Tests: **Jetted** **Yield: 0.5-0.7 GPM**

Water Quality:

<i>Strata Depth (ft.)</i>	<i>Water Type</i>
No Data	No Data

Chemical Analysis Made: **No**

Did the driller knowingly penetrate any strata which contained injurious constituents?: **No**

Certification Data: The driller certified that the driller drilled this well (or the well was drilled under the driller's direct supervision) and that each and all of the statements herein are true and correct. The driller understood that failure to complete the required items will result in the report(s) being returned for completion and resubmittal.

Company Information: **L & L Drilling Co.**
P.O. Box 217
Hye, TX 78635

Driller Name: **Gregory A. Smith**

License Number: **1595**

Comments: **No Data**

Lithology:
DESCRIPTION & COLOR OF FORMATION MATERIAL

<i>Top (ft.)</i>	<i>Bottom (ft.)</i>	<i>Description</i>
0	24	brown & white limestone
24	30	yellow clay
30	45	gray clay
45	56	red clay
56	63	brown gravel
63	70	brown limestone
70	76	brown clay & limestone
76	96	brown, red & yellow limestone
96	144	brown clay

Casing:
BLANK PIPE & WELL SCREEN DATA

<i>Dia. (in.)</i>	<i>New/Used</i>	<i>Type</i>	<i>Setting From/To (ft.)</i>
5	new	plastic solid	0 - 50 0.265
5	new	plastic slotted	50 - 100 0.265
5	new	plastic solid	100 - 144 0.265

IMPORTANT NOTICE FOR PERSONS HAVING WELLS DRILLED CONCERNING CONFIDENTIALITY

TEX. OCC. CODE Title 12, Chapter 1901.251, authorizes the owner (owner or the person for whom the well was drilled) to keep information in Well Reports confidential. The Department shall hold the contents of the well log confidential and not a matter of public record if it receives, by certified mail, a written request to do so from the owner.

Please include the report's Tracking Number on your written request.

Texas Department of Licensing and Regulation
P.O. Box 12157
Austin, TX 78711
(512) 334-5540

STATE OF TEXAS WELL REPORT for Tracking #300215

Owner: Rick Waldrop	Owner Well #: 1	
Address: P.O. Box 39 Spicewood, TX 78669	Grid #: 57-39-3	
Well Location: 8500 CR 404 Spicewood, TX 78669	Latitude: 30° 27' 56" N	
Well County: Burnet	Longitude: 098° 08' 50" W	
	Elevation: No Data	
Type of Work: New Well		Proposed Use: Domestic

Drilling Start Date: **4/9/2012** Drilling End Date: **4/9/2012**

	Diameter (in.)	Top Depth (ft.)	Bottom Depth (ft.)
Borehole:	8	0	20
	6.5	20	155

Drilling Method: **Air Rotary**

Borehole Completion: **Straight Wall**

	Top Depth (ft.)	Bottom Depth (ft.)	Description (number of sacks & material)
Annular Seal Data:	0	20	4 of Portland

Seal Method: **Slurry**

Sealed By: **Driller**

Distance to Property Line (ft.): **50+**

Distance to Septic Field or other
concentrated contamination (ft.): **100+**

Distance to Septic Tank (ft.): **No Data**

Method of Verification: **Landowner**

Surface Completion: **Surface Sleeve Installed**

Water Level: **No Data**

Packers: **Burlap/Neoprene 75', 70', 20'**

Type of Pump: **No Data**

Well Tests: **Pump Yield: 3 GPM**

Water Quality:

Strata Depth (ft.)	Water Type
81-135	Trinity

Chemical Analysis Made: **No**

Did the driller knowingly penetrate any strata which contained injurious constituents?: **No**

Certification Data: The driller certified that the driller drilled this well (or the well was drilled under the driller's direct supervision) and that each and all of the statements herein are true and correct. The driller understood that failure to complete the required items will result in the report(s) being returned for completion and resubmittal.

Company Information: **Apex Drilling, Inc.**
P.O. Box 867
Marble Falls, TX 78654

Driller Name: **Michael G. Becker** License Number: **54516**

Comments: **No Data**

Lithology:
DESCRIPTION & COLOR OF FORMATION MATERIAL

Casing:
BLANK PIPE & WELL SCREEN DATA

Top (ft.)	Bottom (ft.)	Description
0	1	Topsoil
1	4	Tan Limestone
4	20	Red Sandstone
20	38	Tan Limestone
38	42	Gray Limestone
42	73	Gray Clay
73	81	Red Sandstone
81	135	Gravel **H2O
135	155	Tan Clay

Dia. (in.)	New/Used	Type	Setting From/To (ft.)
4.5"	(5" OD)	New PVC	+2' to 75' SDR17
4.5"	(5" OD)	New Slotted PVC	75' to 135' .035
4.5"	(5" OD)	New PVC	135' to 155 SDR17

IMPORTANT NOTICE FOR PERSONS HAVING WELLS DRILLED CONCERNING CONFIDENTIALITY

TEX. OCC. CODE Title 12, Chapter 1901.251, authorizes the owner (owner or the person for whom the well was drilled) to keep information in Well Reports confidential. The Department shall hold the contents of the well log confidential and not a matter of public record if it receives, by certified mail, a written request to do so from the owner.

Please include the report's Tracking Number on your written request.

Texas Department of Licensing and Regulation
P.O. Box 12157
Austin, TX 78711
(512) 334-5540

STATE OF TEXAS WELL REPORT for Tracking #302002

Owner: Todd Ashmore	Owner Well #: 2
Address: P O Box 637 Spicewood, TX 78669	Grid #: 57-39-3
Well Location: 125 Spur 191 Spicewood, TX 78669	Latitude: 30° 28' 05" N
Well County: Burnet	Longitude: 098° 09' 34" W
	Elevation: 789 ft. above sea level
Type of Work: New Well	
Proposed Use: Domestic	

Drilling Start Date: **9/2/2012** Drilling End Date: **9/2/2012**

	<i>Diameter (in.)</i>	<i>Top Depth (ft.)</i>	<i>Bottom Depth (ft.)</i>
Borehole:	10	0	50

Drilling Method: **Air Rotary**

Borehole Completion: **Filter Packed; Open Hole**

	<i>Top Depth (ft.)</i>	<i>Bottom Depth (ft.)</i>	<i>Filter Material</i>	<i>Size</i>
Filter Pack Intervals:	15	50	Gravel	3/8

	<i>Top Depth (ft.)</i>	<i>Bottom Depth (ft.)</i>	<i>Description (number of sacks & material)</i>
Annular Seal Data:	0	15	4 cement

Seal Method: **Unknown**

Distance to Property Line (ft.): **20**

Sealed By: **Steve Stewart**

Distance to Septic Field or other concentrated contamination (ft.): **300**

Variance Number: **no**

Distance to Septic Tank (ft.): **No Data**

Method of Verification: **measured**

Surface Completion: **Pitless Adapter Used**

Water Level: **15 ft. below land surface on 2012-09-03** Measurement Method: **Unknown**

Packers: **none**

Type of Pump: **Submersible** Pump Depth (ft.): **40**

Well Tests: **Estimated** Yield: **7 GPM**

Water Quality:

Strata Depth (ft.)	Water Type
20 to 35	fresh

Chemical Analysis Made: **No**

Did the driller knowingly penetrate any strata which contained injurious constituents?: **No**

Certification Data: The driller certified that the driller drilled this well (or the well was drilled under the driller's direct supervision) and that each and all of the statements herein are true and correct. The driller understood that failure to complete the required items will result in the report(s) being returned for completion and resubmittal.

Company Information: **Bee Cave Drilling**
185 Angel Fire Dr
Dripping Springs, TX 78620

Driller Name: **Jim Blair** License Number: **54416**

Apprentice Name: **Steve Stewart** Apprentice Number: **11049501**

Comments: **No Data**

Lithology:
DESCRIPTION & COLOR OF FORMATION MATERIAL

Casing:
BLANK PIPE & WELL SCREEN DATA

Top (ft.)	Bottom (ft.)	Description
0	4	Topsoil
4	18	Tan limestone
18	20	White limestone
20	35	Gravel
35	50	Tan limestone

Dia. (in.)	New/Used	Type	Setting From/To (ft.)
4 1/2	New	Plastic	+1 to 20 sdr 17
4 1/2	New	Plastic / perf 1/4"	20 to 50 sdr 17

IMPORTANT NOTICE FOR PERSONS HAVING WELLS DRILLED CONCERNING CONFIDENTIALITY

TEX. OCC. CODE Title 12, Chapter 1901.251, authorizes the owner (owner or the person for whom the well was drilled) to keep information in Well Reports confidential. The Department shall hold the contents of the well log confidential and not a matter of public record if it receives, by certified mail, a written request to do so from the owner.

Please include the report's Tracking Number on your written request.

Texas Department of Licensing and Regulation
P.O. Box 12157
Austin, TX 78711
(512) 334-5540

Water Quality:

Strata Depth (ft.)	Water Type
10-50	Ellenberger

Chemical Analysis Made: **No**

Did the driller knowingly penetrate any strata which contained injurious constituents?: **No**

Certification Data: The driller certified that the driller drilled this well (or the well was drilled under the driller's direct supervision) and that each and all of the statements herein are true and correct. The driller understood that failure to complete the required items will result in the report(s) being returned for completion and resubmittal.

Company Information: **Apex Drilling, Inc**
PO Box 867
Marble Falls, TX 78669

Driller Name: **Michale G Becker, P.G.** License Number: **54516**

Comments: **No Data**

Lithology:
DESCRIPTION & COLOR OF FORMATION MATERIAL

Casing:
BLANK PIPE & WELL SCREEN DATA

Top (ft.)	Bottom (ft.)	Description
0	2	Top Soil
2	10	Tan-Grey Limestone
10	12	Tan-Grey Limestone
12	75	Broken Limestone
75	120	Black Limestone

Dia. (in.)	New/Used	Type	Setting From/To (ft.)
4.5"	(5" OD)	New PVC	+2' to 20' Sch40
4.5"	(5" OD)	New Slotted PVC	20' to 40' .035
4.5"	(5" OD)	New PVC	40' to 60' Sch40
4.5"	(5" OD)	New Slotted PVC	60' to 100' .035
4.5"	(5" OD)	New PVC	100' to 120' Sch40

IMPORTANT NOTICE FOR PERSONS HAVING WELLS DRILLED CONCERNING CONFIDENTIALITY

TEX. OCC. CODE Title 12, Chapter 1901.251, authorizes the owner (owner or the person for whom the well was drilled) to keep information in Well Reports confidential. The Department shall hold the contents of the well log confidential and not a matter of public record if it receives, by certified mail, a written request to do so from the owner.

Please include the report's Tracking Number on your written request.

Texas Department of Licensing and Regulation
P.O. Box 12157
Austin, TX 78711
(512) 334-5540

STATE OF TEXAS WELL REPORT for Tracking #144715

Owner: Grelle Resource Area c/o LCRA	Owner Well #: Grelle#1
Address: Mail Stop L412; PO Box 220 Austin, TX 78767	Grid #: 57-39-3
Well Location: Krause Springs Road Spicewood, TX 78669	Latitude: 30° 28' 34" N
Well County: Burnet	Longitude: 098° 08' 37" W
	Elevation: 778 ft. above sea level

****Plugged Within 48 Hours****

****This well has been plugged****

Plugging Report Tracking #120906

Type of Work: New Well	Proposed Use: Domestic
-------------------------------	-------------------------------

Drilling Start Date: **4/21/2008** Drilling End Date: **4/21/2008**

	<i>Diameter (in.)</i>	<i>Top Depth (ft.)</i>	<i>Bottom Depth (ft.)</i>
Borehole:	8	0	60
	6.75	60	480

Drilling Method: **Air Hammer; Air Rotary**

Borehole Completion: **Unknown**

Annular Seal Data: **No Data**

Seal Method: **Not Applicable**

Sealed By: **Unknown**

Distance to Property Line (ft.): **No Data**

Distance to Septic Field or other concentrated contamination (ft.): **No Data**

Distance to Septic Tank (ft.): **No Data**

Method of Verification: **No Data**

Surface Completion: **Unknown**

Water Level: **No Data**

Packers: **No Data**

Type of Pump: **No Data**

Well Tests: **No Test Data Specified**

Water Quality:

<i>Strata Depth (ft.)</i>	<i>Water Type</i>
No Data	No Data

Chemical Analysis Made: **No**

Did the driller knowingly penetrate any strata which contained injurious constituents?: **No**

Certification Data: The driller certified that the driller drilled this well (or the well was drilled under the driller's direct supervision) and that each and all of the statements herein are true and correct. The driller understood that failure to complete the required items will result in the report(s) being returned for completion and resubmittal.

Company Information: **Whisenant & Lyle Water Services Inc**

**P.O. Box 525
Dripping Springs, TX 78620**

Driller Name: **Martin D. Lingle Jr.**

License Number: **54813**

Comments: **No Data**

Lithology:
DESCRIPTION & COLOR OF FORMATION MATERIAL

Casing:
BLANK PIPE & WELL SCREEN DATA

<i>Top (ft.)</i>	<i>Bottom (ft.)</i>	<i>Description</i>
0	2	topsoil
2	5	red brown limestone
5	6	caliche
6	7	red limestone
7	25	red caliche limestone
25	58	pink gray white limestone
58	65	dark brown limestone
65	90	light gray limestone
90	460	gray limestone
460	480	black rock

<i>Dia. (in.)</i>	<i>New/Used</i>	<i>Type</i>	<i>Setting From/To (ft.)</i>
No Data			

IMPORTANT NOTICE FOR PERSONS HAVING WELLS DRILLED CONCERNING CONFIDENTIALITY

TEX. OCC. CODE Title 12, Chapter 1901.251, authorizes the owner (owner or the person for whom the well was drilled) to keep information in Well Reports confidential. The Department shall hold the contents of the well log confidential and not a matter of public record if it receives, by certified mail, a written request to do so from the owner.

Please include the report's Tracking Number on your written request.

Texas Department of Licensing and Regulation
P.O. Box 12157
Austin, TX 78711
(512) 334-5540

STATE OF TEXAS WELL REPORT for Tracking #144718

Owner: Grelle Resource Area c/o LCRA	Owner Well #: Grelle#3
Address: Mail Stop L412; PO Box 220 Austin, TX 78767	Grid #: 57-39-3
Well Location: Krause Springs Road Spicewood, TX 78669	Latitude: 30° 28' 28" N
Well County: Burnet	Longitude: 098° 08' 37" W
	Elevation: 742 ft. above sea level

****Plugged Within 48 Hours****

****This well has been plugged****

Plugging Report Tracking #120908

Type of Work: New Well	Proposed Use: Domestic
-------------------------------	-------------------------------

Drilling Start Date: **4/23/2008** Drilling End Date: **4/23/2008**

	<i>Diameter (in.)</i>	<i>Top Depth (ft.)</i>	<i>Bottom Depth (ft.)</i>
Borehole:	6.75	0	140

Drilling Method: **Air Rotary**

Borehole Completion: **Unknown**

Annular Seal Data: **No Data**

Seal Method: **Not Applicable**

Sealed By: **Unknown**

Distance to Property Line (ft.): **No Data**

Distance to Septic Field or other concentrated contamination (ft.): **No Data**

Distance to Septic Tank (ft.): **No Data**

Method of Verification: **No Data**

Surface Completion: **Unknown**

Water Level: **No Data**

Packers: **No Data**

Type of Pump: **No Data**

Well Tests: **No Test Data Specified**

Water Quality:

<i>Strata Depth (ft.)</i>	<i>Water Type</i>
No Data	No Data

Chemical Analysis Made: **No**

Did the driller knowingly penetrate any strata which contained injurious constituents?: **No**

Certification Data: The driller certified that the driller drilled this well (or the well was drilled under the driller's direct supervision) and that each and all of the statements herein are true and correct. The driller understood that failure to complete the required items will result in the report(s) being returned for completion and resubmittal.

Company Information: **Whisenant & Lyle Water Services Inc**
P.O. Box 525
Dripping Springs, TX 78620

Driller Name: **Martin D. Lingle Jr.** License Number: **54813**

Comments: **No Data**

Lithology:
DESCRIPTION & COLOR OF FORMATION MATERIAL

Casing:
BLANK PIPE & WELL SCREEN DATA

<i>Top (ft.)</i>	<i>Bottom (ft.)</i>	<i>Description</i>
0	2	topsoil
2	3	brown sandstone
3	10	red sandstone
10	90	brown sandstone
90	125	brown tan limestone
125	140	gray black limestone

<i>Dia. (in.)</i>	<i>New/Used</i>	<i>Type</i>	<i>Setting From/To (ft.)</i>
No Data			

IMPORTANT NOTICE FOR PERSONS HAVING WELLS DRILLED CONCERNING CONFIDENTIALITY

TEX. OCC. CODE Title 12, Chapter 1901.251, authorizes the owner (owner or the person for whom the well was drilled) to keep information in Well Reports confidential. The Department shall hold the contents of the well log confidential and not a matter of public record if it receives, by certified mail, a written request to do so from the owner.

Please include the report's Tracking Number on your written request.

Texas Department of Licensing and Regulation
P.O. Box 12157
Austin, TX 78711
(512) 334-5540

STATE OF TEXAS WELL REPORT for Tracking #510663

Owner: Krause Springs	Owner Well #: B-01MW
Address: 424 CR 404 Spicewood, TX 78669	Grid #: 57-39-3
Well Location: 424 CR 404 Spicewood, TX 78669	Latitude: 30° 28' 46.36" N
Well County: Burnet	Longitude: 098° 08' 47.08" W
	Elevation: 744 ft. above sea level
Type of Work: New Well Proposed Use: Monitor	

Drilling Start Date: **4/15/2019** Drilling End Date: **4/15/2019**

	Diameter (in.)	Top Depth (ft.)	Bottom Depth (ft.)
Borehole:	6	0	65

Drilling Method: **Hollow Stem Auger**

Borehole Completion: **Perforated or Slotted**

	Top Depth (ft.)	Bottom Depth (ft.)	Description (number of sacks & material)
Annular Seal Data:	0	2	Concrete 1 Bags/Sacks
	2	15	Bentonite 2 Bags/Sacks
	15	25	Sand 2 Bags/Sacks
	25	65	Bentonite 8 Bags/Sacks

Seal Method: **Hand Mixed**

Sealed By: **Driller**

Distance to Property Line (ft.): **No Data**

Distance to Septic Field or other concentrated contamination (ft.): **No Data**

Distance to Septic Tank (ft.): **No Data**

Method of Verification: **No Data**

Surface Completion: **Surface Slab Installed**

Surface Completion by Driller

Water Level: **5.5 ft. below land surface on 2019-04-15** Measurement Method: **Electric Line**

Packers: **No Data**

Type of Pump: **No Data**

Well Tests: **No Test Data Specified**

Water Quality:

<i>Strata Depth (ft.)</i>	<i>Water Type</i>
No Data	No Data

Chemical Analysis Made: **No**

Did the driller knowingly penetrate any strata which contained injurious constituents?: **No**

Certification Data: The driller certified that the driller drilled this well (or the well was drilled under the driller's direct supervision) and that each and all of the statements herein are true and correct. The driller understood that failure to complete the required items will result in the report(s) being returned for completion and resubmittal.

Company Information: **Holt Engineering**
2220 BARTON SKWY
Austin, TX 78704

Driller Name: **Will McGee** License Number: **59972**

Comments: **No Data**

Report Amended on 5/10/2019 by Request #27820

Lithology:
DESCRIPTION & COLOR OF FORMATION MATERIAL

<i>Top (ft.)</i>	<i>Bottom (ft.)</i>	<i>Description</i>
0	3	Dark Brown Clay
3	30	Tan and Light Brown Sandy Clay
30	58.5	Brown Clay
58.5	65	Gray Limestone

Casing:
BLANK PIPE & WELL SCREEN DATA

<i>Dia (in.)</i>	<i>Type</i>	<i>Material</i>	<i>Sch./Gage</i>	<i>Top (ft.)</i>	<i>Bottom (ft.)</i>
2	Blank	New Plastic (PVC)	40	0	15
2	Perforated or Slotted	New Plastic (PVC)	40 0.010	15	25

IMPORTANT NOTICE FOR PERSONS HAVING WELLS DRILLED CONCERNING CONFIDENTIALITY

TEX. OCC. CODE Title 12, Chapter 1901.251, authorizes the owner (owner or the person for whom the well was drilled) to keep information in Well Reports confidential. The Department shall hold the contents of the well log confidential and not a matter of public record if it receives, by certified mail, a written request to do so from the owner.

Please include the report's Tracking Number on your written request.

Texas Department of Licensing and Regulation
P.O. Box 12157
Austin, TX 78711
(512) 334-5540

STATE OF TEXAS WELL REPORT for Tracking #515469

Owner: H.E. Nauman	Owner Well #: No Data
Address: P O Box 278 Spicewood, TX 78669	Grid #: 57-39-3
Well Location: 7685 CR 404 Spicewood, TX 78669	Latitude: 30° 28' 42" N
Well County: Burnet	Longitude: 098° 09' 35" W
	Elevation: No Data
Type of Work: New Well	
Proposed Use: Domestic	

Drilling Start Date: **5/17/2019** Drilling End Date: **5/17/2019**

	<i>Diameter (in.)</i>	<i>Top Depth (ft.)</i>	<i>Bottom Depth (ft.)</i>
Borehole:	8	0	20
	6.25	20	100

Drilling Method: **Air Rotary**

Borehole Completion: **Straight Wall**

	<i>Top Depth (ft.)</i>	<i>Bottom Depth (ft.)</i>	<i>Description (number of sacks & material)</i>
Annular Seal Data:	0	20	Portland 4 Bags/Sacks

Seal Method: **Slurry**

Sealed By: **Driller**

Distance to Property Line (ft.): **50**

Distance to Septic Field or other concentrated contamination (ft.): **100**

Distance to Septic Tank (ft.): **50**

Method of Verification: **Land Owner**

Surface Completion: **Surface Sleeve Installed**

Surface Completion by Driller

Water Level: **No Data**

Packers: **Burlap/Neoprene at 20 ft.
Burlap/Neoprene at 30 ft.
Burlap/Neoprene at 55 ft.
Burlap/Neoprene at 60 ft.**

Type of Pump: **No Data**

Well Tests: **Jetted Yield: 15-20 GPM**

Water Quality:

Strata Depth (ft.)	Water Type
61 - 88	Marble Falls

Chemical Analysis Made: **No**

Did the driller knowingly penetrate any strata which contained injurious constituents?: **No**

Certification Data: The driller certified that the driller drilled this well (or the well was drilled under the driller's direct supervision) and that each and all of the statements herein are true and correct. The driller understood that failure to complete the required items will result in the report(s) being returned for completion and resubmittal.

Company Information: **Apex Drilling, Inc.**
P.O. Box 867
Marble Falls, TX 78654

Driller Name: **Andrew Jackson Johnson** License Number: **54989**

Comments: **No Data**

Lithology:
DESCRIPTION & COLOR OF FORMATION MATERIAL

Top (ft.)	Bottom (ft.)	Description
0	1	Top Soil
1	3	Red LS
3	30	Gravel
30	33	Gray LS
33	42	Red Clay
42	46	Gray LS
46	52	Tan Clay
52	61	Gray LS
61	72	Broken
72	100	Gray LS

Casing:
BLANK PIPE & WELL SCREEN DATA

Dia (in.)	Type	Material	Sch./Gage	Top (ft.)	Bottom (ft.)
4.5	Blank	New Plastic (PVC)	SDR17	2	60
4.5	Screen	New Plastic (PVC)	.035	60	100

IMPORTANT NOTICE FOR PERSONS HAVING WELLS DRILLED CONCERNING CONFIDENTIALITY

TEX. OCC. CODE Title 12, Chapter 1901.251, authorizes the owner (owner or the person for whom the well was drilled) to keep information in Well Reports confidential. The Department shall hold the contents of the well log confidential and not a matter of public record if it receives, by certified mail, a written request to do so from the owner.

Please include the report's Tracking Number on your written request.

**Texas Department of Licensing and Regulation
P.O. Box 12157
Austin, TX 78711
(512) 334-5540**

STATE OF TEXAS WELL REPORT for Tracking #534626

Owner: Stanley Arnold	Owner Well #: No Data
Address: p.o. box 341442 Austin, TX 78734	Grid #: 57-39-3
Well Location: 8006 cr 404 spicewood, TX 78669	Latitude: 30° 28' 32" N
Well County: Burnet	Longitude: 098° 09' 24.3" W
	Elevation: 781 ft. above sea level
Type of Work: New Well Proposed Use: commercial	

Drilling Start Date: **12/16/2019** Drilling End Date: **1/16/2020**

	Diameter (in.)	Top Depth (ft.)	Bottom Depth (ft.)
Borehole:	10.625	0	45

Drilling Method: **Air Rotary**

Borehole Completion: **Filter Packed**

	Top Depth (ft.)	Bottom Depth (ft.)	Filter Material	Size
Filter Pack Intervals:	22	45	Gravel	3/8

	Top Depth (ft.)	Bottom Depth (ft.)	Description (number of sacks & material)
Annular Seal Data:	0	22	Cement 12

Seal Method: **Pressure**

Sealed By: **Driller**

Distance to Property Line (ft.): **No Data**

Distance to Septic Field or other concentrated contamination (ft.): **No Data**

Distance to Septic Tank (ft.): **No Data**

Method of Verification: **No Data**

Surface Completion: **Surface Sleeve Installed**

Water Level: **22 ft. below land surface on 2019-12-17** Measurement Method: **Electric Line**

Packers: **No Data**

Type of Pump: **No Data**

Well Tests: **Jetted** **Yield: 5 GPM**

Water Quality:

<i>Strata Depth (ft.)</i>	<i>Water Type</i>
No Data	No Data

Chemical Analysis Made: **No**

Did the driller knowingly penetrate any strata which contained injurious constituents?: **No**

Certification Data: The driller certified that the driller drilled this well (or the well was drilled under the driller's direct supervision) and that each and all of the statements herein are true and correct. The driller understood that failure to complete the required items will result in the report(s) being returned for completion and resubmittal.

Company Information: **Bee Cave Drilling, Inc.**
185 Angel Fire Dr.
Dripping Springs, TX 78620

Driller Name: **jim blair** License Number: **54416**

Comments: **CTGCD #7397**

Lithology:
DESCRIPTION & COLOR OF FORMATION MATERIAL

<i>Top (ft.)</i>	<i>Bottom (ft.)</i>	<i>Description</i>
0	1	topsoil
1	5	brown gravel
5	20	white limestone
20	22	tan limestone
22	25	brown limestone
25	30	red gravel
30	40	red gravel/clay
40	45	granite

Casing:
BLANK PIPE & WELL SCREEN DATA

<i>Dia (in.)</i>	<i>Type</i>	<i>Material</i>	<i>Sch./Gage</i>	<i>Top (ft.)</i>	<i>Bottom (ft.)</i>
4.5	Blank	New Plastic (PVC)	sdr-17	0	25
4.5	Perforated or Slotted	New Plastic (PVC)	sdr-17	25	45

IMPORTANT NOTICE FOR PERSONS HAVING WELLS DRILLED CONCERNING CONFIDENTIALITY

TEX. OCC. CODE Title 12, Chapter 1901.251, authorizes the owner (owner or the person for whom the well was drilled) to keep information in Well Reports confidential. The Department shall hold the contents of the well log confidential and not a matter of public record if it receives, by certified mail, a written request to do so from the owner.

Please include the report's Tracking Number on your written request.

Texas Department of Licensing and Regulation
P.O. Box 12157
Austin, TX 78711
(512) 334-5540

STATE OF TEXAS WELL REPORT for Tracking #19067

Owner: LINDA WALL	Owner Well #: 001
Address: PO BOX 127 SPICEWOOD, TX 78669	Grid #: 57-39-3
Well Location: CR 404 SPICEWOOD, TX 78669	Latitude: 30° 28' 23" N
Well County: Burnet	Longitude: 098° 09' 03" W
	Elevation: No Data
Type of Work: New Well	
Proposed Use: Domestic	

Drilling Start Date: **3/19/2003** Drilling End Date: **3/19/2003**

	<i>Diameter (in.)</i>	<i>Top Depth (ft.)</i>	<i>Bottom Depth (ft.)</i>
Borehole:	10	0	40

Drilling Method: **Air Rotary**

Borehole Completion: **Filter Packed**

	<i>Top Depth (ft.)</i>	<i>Bottom Depth (ft.)</i>	<i>Filter Material</i>	<i>Size</i>
Filter Pack Intervals:	10	35	Gravel	

	<i>Top Depth (ft.)</i>	<i>Bottom Depth (ft.)</i>	<i>Description (number of sacks & material)</i>
Annular Seal Data:	0	10	12

Seal Method: **SLURRIED & POURED**

Distance to Property Line (ft.): **No Data**

Sealed By: **Driller**

Distance to Septic Field or other concentrated contamination (ft.): **No Data**

Distance to Septic Tank (ft.): **No Data**

Method of Verification: **NOT YET INSTALLED**

Surface Completion: **Surface Sleeve Installed**

Water Level: **0 ft. below land surface on 2003-03-19** Measurement Method: **Unknown**

Packers: **NONE**

Type of Pump: **DID NOT SET** Pump Depth (ft.): **0**

Well Tests: **Jetted** Yield: **15 GPM**

Water Quality:

Strata Depth (ft.)	Water Type
No Data	No Data

Chemical Analysis Made: **No**

Did the driller knowingly penetrate any strata which contained injurious constituents?: **No**

Certification Data: The driller certified that the driller drilled this well (or the well was drilled under the driller's direct supervision) and that each and all of the statements herein are true and correct. The driller understood that failure to complete the required items will result in the report(s) being returned for completion and resubmittal.

Company Information: **BEE CAVE DRILLING, INC.**
185 ANGELFIRE DR.
DRIPPING SPRINGS, TX 78620

Driller Name: **BOBBY ROBERTS** License Number: **54416**

Comments: **No Data**

Lithology:
DESCRIPTION & COLOR OF FORMATION MATERIAL

Casing:
BLANK PIPE & WELL SCREEN DATA

Top (ft.)	Bottom (ft.)	Description
0	1	TOPSOIL
1	40	GRAVEL W/B 15 GPM

Dia. (in.)	New/Used	Type	Setting From/To (ft.)
4.5	NEW	PLASTIC	0 - 35

IMPORTANT NOTICE FOR PERSONS HAVING WELLS DRILLED CONCERNING CONFIDENTIALITY

TEX. OCC. CODE Title 12, Chapter 1901.251, authorizes the owner (owner or the person for whom the well was drilled) to keep information in Well Reports confidential. The Department shall hold the contents of the well log confidential and not a matter of public record if it receives, by certified mail, a written request to do so from the owner.

Please include the report's Tracking Number on your written request.

Texas Department of Licensing and Regulation
P.O. Box 12157
Austin, TX 78711
(512) 334-5540

STATE OF TEXAS WELL REPORT for Tracking #20180

Owner: LINDA WALL	Owner Well #: 003
Address: PO BOX 127 SPICEWOOD, TX 78669	Grid #: 57-39-3
Well Location: CR 404 SPICEWOOD, TX 78669	Latitude: 30° 28' 21" N
Well County: Burnet	Longitude: 098° 08' 55" W
	Elevation: 852 ft. above sea level

****Plugged Within 48 Hours****

****This well has been plugged****

Plugging Report Tracking #107557

Type of Work: **New Well**

Proposed Use: **Domestic**

Drilling Start Date: **3/19/2003**

Drilling End Date: **3/19/2003**

	Diameter (in.)	Top Depth (ft.)	Bottom Depth (ft.)
Borehole:	10	0	30
	8	30	270

Drilling Method: **Air Rotary**

Borehole Completion: **Unknown**

	Top Depth (ft.)	Bottom Depth (ft.)	Description (number of sacks & material)
Annular Seal Data:	0	5	8

Seal Method: **SLURRIED & POURED**

Distance to Property Line (ft.): **No Data**

Sealed By: **Driller**

Distance to Septic Field or other concentrated contamination (ft.): **No Data**

Distance to Septic Tank (ft.): **No Data**

Method of Verification: **NOT YET INSTALLED**

Surface Completion: **Unknown**

Water Level: **No Data**

Packers: **NONE**

Type of Pump: **No Data**

Well Tests: **Unknown** **Yield: 0 GPM**

Description (number of sacks & material)	Top Depth (ft.)	Bottom Depth (ft.)
NONE 0 5 CEMENT 8		

Plug Information:

Water Quality:

<i>Strata Depth (ft.)</i>	<i>Water Type</i>
No Data	No Data

Chemical Analysis Made: **No**

Did the driller knowingly penetrate any strata which contained injurious constituents?: **No**

Certification Data: The driller certified that the driller drilled this well (or the well was drilled under the driller's direct supervision) and that each and all of the statements herein are true and correct. The driller understood that failure to complete the required items will result in the report(s) being returned for completion and resubmittal.

Company Information: **BEE CAVE DRILLING, INC.**
185 ANGELFIRE DR.
DRIPPING SPRINGS, TX 78620

Driller Name: **BOBBY ROBERTS** License Number: **54416**

Comments: **No Data**

Lithology:
DESCRIPTION & COLOR OF FORMATION MATERIAL

Casing:
BLANK PIPE & WELL SCREEN DATA

<i>Top (ft.)</i>	<i>Bottom (ft.)</i>	<i>Description</i>
0	1	TOPSOIL
1	30	RED SAND & GRAVEL
30	70	GRAVEL
70	230	TAN ROCK
230	270	BLUE CLAY

<i>Dia. (in.)</i>	<i>New/Used</i>	<i>Type</i>	<i>Setting From/To (ft.)</i>
NONE			

IMPORTANT NOTICE FOR PERSONS HAVING WELLS DRILLED CONCERNING CONFIDENTIALITY

TEX. OCC. CODE Title 12, Chapter 1901.251, authorizes the owner (owner or the person for whom the well was drilled) to keep information in Well Reports confidential. The Department shall hold the contents of the well log confidential and not a matter of public record if it receives, by certified mail, a written request to do so from the owner.

Please include the report's Tracking Number on your written request.

Texas Department of Licensing and Regulation
P.O. Box 12157
Austin, TX 78711
(512) 334-5540

STATE OF TEXAS WELL REPORT for Tracking #24805

Owner: HAROLD A. HUDSON, JR.	Owner Well #: 1
Address: 31439 HIGH RIDGE DR. BULVERDE, TX 78163	Grid #: 57-39-3
Well Location: BURNET COUNTY ROAD 404 MARBLE FALLS, TX 78654	Latitude: 30° 27' 57" N
Well County: Burnet	Longitude: 098° 08' 40" W
	Elevation: No Data

****Plugged Within 48 Hours****

****This well has been plugged****

Plugging Report Tracking #108084

Type of Work: New Well	Proposed Use: Domestic
-------------------------------	-------------------------------

Drilling Start Date: **8/12/2003** Drilling End Date: **8/12/2003**

	<i>Diameter (in.)</i>	<i>Top Depth (ft.)</i>	<i>Bottom Depth (ft.)</i>
Borehole:	8.62	0	180

Drilling Method: **Air Hammer**

Borehole Completion: **Plugged**

	<i>Top Depth (ft.)</i>	<i>Bottom Depth (ft.)</i>	<i>Description (number of sacks & material)</i>
Annular Seal Data:	0	20	3

Seal Method: **GRAVITY CEMENTED**

Distance to Property Line (ft.): **No Data**

Sealed By: **Driller**

Distance to Septic Field or other concentrated contamination (ft.): **200**

Distance to Septic Tank (ft.): **No Data**

Method of Verification: **ESTIMATED**

Surface Completion: **Unknown**

Water Level: **No Data**

Packers: **NONE**

Type of Pump: **No Data**

Well Tests: **Jetted Yield: 0 GPM**

	<i>Top Depth (ft.)</i>	<i>Bottom Depth (ft.)</i>
Plug Information:	NONE 0 20 CEMENT 3	

Water Quality:

Strata Depth (ft.)	Water Type
No Data	No Data

Chemical Analysis Made: **No**

Did the driller knowingly penetrate any strata which contained injurious constituents?: **No**

Certification Data: The driller certified that the driller drilled this well (or the well was drilled under the driller's direct supervision) and that each and all of the statements herein are true and correct. The driller understood that failure to complete the required items will result in the report(s) being returned for completion and resubmittal.

Company Information: **L & L DRILLING CO.**
DRAWER 217
HYE, TX 78635

Driller Name: **GREGORY A. SMITH**

License Number: **1595**

Apprentice Name: **LYNETTE SMITH**

Apprentice Number: **WWDAPP00001**
264

Comments: **No Data**

Lithology:
DESCRIPTION & COLOR OF FORMATION MATERIAL

Casing:
BLANK PIPE & WELL SCREEN DATA

From (ft)	To (ft)	Description
0	1	BROWN TOPSOIL
1	4	YELLOW & WHITE CALICHE
4	11	RED SHALE
11	16	BROWN SAND
16	19	WHITE LIMESTONE & BROWN SAND
19	31	GRAY LIMESTONE & SHALE
31	68	GRAY CLAY & SHALE
68	75	RED CLAY
75	96	WHITE, RED & YELLOW GRAVEL
96	102	YELLOW SHALE & WHITE & YELLOW SAND
102	127	WHITE LIMESTONE WITH RED CLAY STREAKS
127	130	WHITE & RED LIMESTONE WITH YELLOW SHALE STREAKS
130	139	WHITE, BROWN & RED LIMESTONE
139	180	YELLOW & BROWN SHALE

Dia. (in.)	New/Used	Type	Setting From/To (ft.)
NONE			

IMPORTANT NOTICE FOR PERSONS HAVING WELLS DRILLED CONCERNING CONFIDENTIALITY

TEX. OCC. CODE Title 12, Chapter 1901.251, authorizes the owner (owner or the person for whom the well was drilled) to keep information in Well Reports confidential. The Department shall hold the contents of the well log confidential and not a matter of public record if it receives, by certified mail, a written request to do so from the owner.

Please include the report's Tracking Number on your written request.

**Texas Department of Licensing and Regulation
P.O. Box 12157
Austin, TX 78711
(512) 334-5540**

STATE OF TEXAS WELL REPORT for Tracking #24806

Owner: HAROLD A. HUDSON, JR.	Owner Well #: 2
Address: 31439 HIGH RIDGE DR. BULVERDE, TX 78163	Grid #: 57-39-3
Well Location: BURNET COUNTY ROAD 404 MARBLE FALLS, TX 78654	Latitude: 30° 27' 59" N
Well County: Burnet	Longitude: 098° 08' 47" W
	Elevation: No Data
Type of Work: New Well	
Proposed Use: Domestic	

Drilling Start Date: **8/12/2003** Drilling End Date: **8/12/2003**

	<i>Diameter (in.)</i>	<i>Top Depth (ft.)</i>	<i>Bottom Depth (ft.)</i>
Borehole:	9.75	0	205

Drilling Method: **Air Hammer**

Borehole Completion: **Filter Packed**

	<i>Top Depth (ft.)</i>	<i>Bottom Depth (ft.)</i>	<i>Filter Material</i>	<i>Size</i>
Filter Pack Intervals:	20	205	Gravel	

	<i>Top Depth (ft.)</i>	<i>Bottom Depth (ft.)</i>	<i>Description (number of sacks & material)</i>
Annular Seal Data:	0	20	2

Seal Method: **GRAVITY CEMENTED**

Distance to Property Line (ft.): **No Data**

Sealed By: **Driller**

Distance to Septic Field or other concentrated contamination (ft.): **300**

Distance to Septic Tank (ft.): **No Data**

Method of Verification: **ESTIMATED**

Surface Completion: **Surface Sleeve Installed**

Water Level: **76 ft. below land surface on 2003-08-12** Measurement Method: **Unknown**

Packers: **NONE**

Type of Pump: **No Data**

Well Tests: **Estimated** Yield: **2 GPM**

Water Quality:

Strata Depth (ft.)	Water Type
118, 136	No Data

Chemical Analysis Made: **No**

Did the driller knowingly penetrate any strata which contained injurious constituents?: **No**

Certification Data: The driller certified that the driller drilled this well (or the well was drilled under the driller's direct supervision) and that each and all of the statements herein are true and correct. The driller understood that failure to complete the required items will result in the report(s) being returned for completion and resubmittal.

Company Information: **L & L DRILLING CO.**
DRAWER 217
HYE, TX 78635

Driller Name: **GREGORY A. SMITH**

License Number: **1595**

Apprentice Name: **LYNETTE SMITH**

Apprentice Number: **WWDAPP00001**
264

Comments: **No Data**

Lithology:
DESCRIPTION & COLOR OF FORMATION MATERIAL

Casing:
BLANK PIPE & WELL SCREEN DATA

From (ft)	To (ft)	Description
0	2	BROWN TOPSOIL
2	9	WHITE CALICHE
9	18	RED CLAY WITH BROWN SAND LAYERS
18	38	GRAY & WHITE LIMESTONE
38	71	GRAY CLAY & SHALE
71	78	RED CLAY
78	115	WHITE & BROWN GRAVEL WITH RED CLAY
115	137	WHITE, BROWN, & RED LIMESTONE WITH RED SHALE STREAKS
137	181	YELLOW SHALE
181	205	GRAY OILY SHALE
118	120	WATER 1 GPM
136	137	WATER 1 GPM

Dia. (in.)	New/Used	Type	Setting From/To (ft.)
6	NEW	PLASTIC SOLID	+2 80 .280
6	NEW	PLASTIC SLOTTED	80 205 .280

IMPORTANT NOTICE FOR PERSONS HAVING WELLS DRILLED CONCERNING CONFIDENTIALITY

TEX. OCC. CODE Title 12, Chapter 1901.251, authorizes the owner (owner or the person for whom the well was drilled) to keep information in Well Reports confidential. The Department shall hold the contents of the well log confidential and not a matter of public record if it receives, by certified mail, a written request to do so from the owner.

Please include the report's Tracking Number on your written request.

**Texas Department of Licensing and Regulation
P.O. Box 12157
Austin, TX 78711
(512) 334-5540**

STATE OF TEXAS WELL REPORT for Tracking #79353

Owner: Opie's Barbcue	Owner Well #: 2
Address: PO Box 637 Spicewood, TX 78669	Grid #: 57-39-3
Well Location: 125 Spur 191 Spicewood, TX 78669	Latitude: 30° 27' 56" N
Well County: Burnet	Longitude: 098° 09' 29" W
	Elevation: No Data

Type of Work: New Well	Proposed Use: Public Supply
-------------------------------	------------------------------------

Drilling Start Date: **4/5/2005**

Drilling End Date: **4/6/2005**

Plans Approved by TCEQ - **NO**

	Diameter (in.)	Top Depth (ft.)	Bottom Depth (ft.)
Borehole:	9	0	160

Drilling Method: **Air Rotary**

Borehole Completion: **Straight Wall**

	Top Depth (ft.)	Bottom Depth (ft.)	Description (number of sacks & material)
Annular Seal Data:	0	30	10 sx portland

Seal Method: **Tremmie pipe**

Distance to Property Line (ft.): **150+**

Sealed By: **MWS**

Distance to Septic Field or other concentrated contamination (ft.): **150+**

Distance to Septic Tank (ft.): **No Data**

Method of Verification: **measured**

Surface Completion: **Surface Slab Installed**

Water Level: **30 ft. below land surface on 2005-04-14** Measurement Method: **Unknown**

Packers: **neoprene @ 30'**

Type of Pump: **Submersible** Pump Depth (ft.): **100**

Well Tests: **Estimated** Yield: **1-2 GPM**

Water Quality:

<i>Strata Depth (ft.)</i>	<i>Water Type</i>
30-100	fresh

Chemical Analysis Made: **No**

Did the driller knowingly penetrate any strata which contained injurious constituents?: **No**

Certification Data: The driller certified that the driller drilled this well (or the well was drilled under the driller's direct supervision) and that each and all of the statements herein are true and correct. The driller understood that failure to complete the required items will result in the report(s) being returned for completion and resubmittal.

Company Information: **Motal Well Service**
3315 Galseburg Dr
Austin, TX 78745

Driller Name: **Paul Motal** License Number: **54313**

Comments: **TWDB SW #57-39-310**
9/30/2010 Doc Jones

Lithology:
DESCRIPTION & COLOR OF FORMATION MATERIAL

Casing:
BLANK PIPE & WELL SCREEN DATA

<i>Top (ft.)</i>	<i>Bottom (ft.)</i>	<i>Description</i>
0	30	Red shale and clay
30	100	Red limestone and sandstone
100	160	Yellow clay

<i>Dia. (in.)</i>	<i>New/Used</i>	<i>Type</i>	<i>Setting From/To (ft.)</i>
4 1/2	N	PVC	0-30
4 1/2	N	slotted PVC	30-100 0.125

IMPORTANT NOTICE FOR PERSONS HAVING WELLS DRILLED CONCERNING CONFIDENTIALITY

TEX. OCC. CODE Title 12, Chapter 1901.251, authorizes the owner (owner or the person for whom the well was drilled) to keep information in Well Reports confidential. The Department shall hold the contents of the well log confidential and not a matter of public record if it receives, by certified mail, a written request to do so from the owner.

Please include the report's Tracking Number on your written request.

Texas Department of Licensing and Regulation
P.O. Box 12157
Austin, TX 78711
(512) 334-5540

APPENDIX C: WATER QUALITY DATA

Piper Plot Data

Ca	Na+K	Mg	Cl	SO4	HCO3+CO3	Site ID	Description	Date
62.87	6.60	30.55	5.90	4.80	89.30	1	Well	7/30/20
64.25	7.64	28.12	5.62	4.97	89.41	3	Well	7/30/20
59.69	5.68	34.65	8.16	4.97	86.87	5	Well	7/30/20
41.03	20.81	37.61	9.96	6.53	83.51	6	Well	7/30/20
65.35	7.05	27.62	2.20	2.00	95.80	7	Well	7/30/20
52.22	18.54	29.25	5.49	3.41	91.10	8	Well	7/30/20
56.59	18.93	24.48	21.06	10.10	68.85	9	Well	7/30/20
60.24	6.60	33.18	6.93	4.53	88.54	10	Well	7/30/20
63.57	7.62	28.82	6.01	4.56	89.44	11	Well	7/30/20
59.22	15.67	25.12	12.51	8.17	79.32	12	Well	7/30/20
67.83	5.99	26.20	4.89	4.35	90.76	14	Well	7/30/20
57.92	6.69	35.41	6.96	5.55	87.49	15	Well	7/30/20
59.45	5.85	34.72	7.31	4.62	88.08	301	Spring	7/30/20
60.98	7.09	31.95	6.36	4.36	89.28	302	Spring	7/30/20
63.88	7.83	28.31	6.25	4.79	88.96	CC1	Creek	7/30/20
60.70	9.74	29.56	7.07	4.39	88.54	LCC15	Creek	7/30/20
60.10	10.74	29.16	7.35	4.80	87.85	LCC25	Creek	7/30/20
60.26	10.72	29.02	7.93	5.29	86.78	LCC30	Creek	7/30/20
62.13	9.13	28.74	6.51	5.11	88.38	LCC35	Creek	7/30/20
56.30	9.05	34.65	8.79	5.15	86.06	LCC5	Creek	7/30/20
57.39	11.03	31.58	8.32	4.42	87.26	LCC7	Creek	7/30/20
59.49	10.42	30.09	7.55	3.98	88.47	LCC8	Creek	7/30/20
59.38	10.44	30.18	7.75	4.06	88.19	LCC8 Duğ	Creek	7/30/20

Anions

Site ID	Description	Fluoride mg/L	Chloride mg/L	Nitrite mg/L	Bromide mg/L	Nitrate mg/L	Phosphate mg/L	Sulphate mg/L
1	Well	3.37	14.99	<1.0	1.05	3.86	<1.0	16.51
3	Well	3.30	14.35	<1.0	<1.0	3.40	<1.0	17.19
5	Well	3.20	19.84	<1.0	1.07	2.97	<1.0	16.38
6	Well	3.08	24.34	<1.0	<1.0	3.76	<1.0	21.63
7	Well	2.56	14.35	<1.0	<1.0	3.60	<1.0	17.63
8	Well	3.76	17.35	<1.0	1.06	1.48	<1.0	14.58
9	Well	3.71	68.52	1.04	1.21	16.52	<1.0	44.50
10	Well	3.58	18.43	<1.0	<1.0	2.81	<1.0	16.31
11	Well	2.83	16.09	<1.0	<1.0	3.89	<1.0	16.54
12	Well	3.68	35.54	<1.0	1.12	16.14	<1.0	31.47
14	Well	2.53	12.22	<1.0	<1.0	3.45	<1.0	14.72
15	Well	3.89	17.02	<1.0	1.08	2.45	<1.0	18.41
301	Spring	3.64	19.05	<1.0	<1.0	1.87	<1.0	16.30
302	Spring	3.26	18.98	<1.0	1.06	2.52	<1.0	17.64
CC1	Creek	2.71	15.84	<1.0	<1.0	2.63	<1.0	16.44
LCC15	Creek	3.51	19.13	<1.0	<1.0	1.48	<1.0	16.11
LCC25	Creek	3.42	19.56	<1.0	<1.0	1.54	<1.0	17.31
LCC30	Creek	3.43	20.20	<1.0	<1.0	1.57	<1.0	18.26
LCC35	Creek	2.73	16.60	<1.0	<1.0	1.41	<1.0	17.66
LCC5	Creek	2.71	21.58	0.99	1.07	2.79	<1.0	17.11
LCC7	Creek	2.88	22.04	<1.0	1.07	1.28	<1.0	15.86
LCC8	Creek	3.31	19.95	<1.0	1.06	1.76	<1.0	14.25
LCC8 Dup	Creek	4.02	20.17	<1.0	1.05	1.64	<1.0	14.33

Cations

Site ID	Description	Lithium mg/L	Sodium mg/L	Ammonium mg/L	Potassium mg/L	Magnesium mg/L	Manganese mg/L	Calcium mg/L	Strontium mg/L	Barium mg/L
1	Well	<0.1	10.89	<0.1	<0.1	26.78	<0.1	90.88	<0.1	<0.1
3	Well	<0.1	12.49	<0.1	<0.1	24.40	<0.1	91.93	<0.1	<0.1
5	Well	<0.1	8.89	<0.1	<0.1	28.86	<0.1	81.97	<0.1	<0.1
6	Well	<0.1	32.92	<0.1	<0.1	31.73	<0.1	57.07	<0.1	<0.1
7	Well	<0.1	11.21	<0.1	<0.1	23.33	<0.1	91.01	<0.1	<0.1
8	Well	<0.1	30.76	<0.1	1.63	26.45	<0.1	77.88	<0.1	<0.1
9	Well	<0.1	36.12	<0.1	19.15	32.39	<0.1	123.47	<0.1	<0.1
10	Well	<0.1	10.41	<0.1	<0.1	27.83	<0.1	83.31	<0.1	<0.1
11	Well	<0.1	12.76	<0.1	<0.1	25.60	<0.1	93.14	<0.1	<0.1
12	Well	<0.1	30.67	<0.1	0.63	26.30	<0.1	102.25	<0.1	<0.1
14	Well	<0.1	9.51	<0.1	<0.1	22.12	<0.1	94.43	<0.1	<0.1
15	Well	<0.1	12.75	<0.1	<0.1	35.82	<0.1	96.62	<0.1	<0.1
301	Spring	<0.1	9.46	<0.1	<0.1	29.87	<0.1	84.35	<0.1	<0.1
302	Spring	<0.1	11.59	<0.1	<0.1	27.74	<0.1	87.31	<0.1	<0.1
CC1	Creek	<0.1	12.69	<0.1	<0.1	24.36	<0.1	90.64	<0.1	<0.1
LCC15	Creek	<0.1	16.39	<0.1	0.35	26.63	<0.1	90.17	<0.1	<0.1
LCC25	Creek	<0.1	18.12	<0.1	0.06	26.05	<0.1	88.53	<0.1	<0.1
LCC30	Creek	<0.1	18.02	<0.1	0.09	25.86	<0.1	88.56	<0.1	<0.1
LCC35	Creek	<0.1	14.87	<0.1	0.06	24.80	<0.1	88.42	<0.1	<0.1
LCC5	Creek	<0.1	13.95	<0.1	0.07	28.32	<0.1	75.86	<0.1	<0.1
LCC7	Creek	<0.1	17.60	<0.1	0.29	26.90	<0.1	80.61	<0.1	0.02
LCC8	Creek	<0.1	17.43	<0.1	0.23	26.82	<0.1	87.45	<0.1	<0.1
LCC8 Dup	Creek	<0.1	17.24	<0.1	0.24	26.54	<0.1	86.12	<0.1	<0.1

EC_Alk_Field

Date	Time	Site ID	Description	Total Alkalinity (mg/L)	E. coli (MPN/100mL)	Discharge (cfs)	Temperature (°C)	pH (su)	DO (mg/L)	Conductivity (µS/cm)	Water Level (ft)	MP (ft)	Comments
7/30/20	10:03	1	Well	320			22	6.94		691			No water level access
7/30/20	9:05	3	Well	322			22.3	6.97		694	31.15	1.5	
7/30/20	8:20	5	Well	298			21.8	7.23		994	24.3	1.9	
7/30/20	9:55	6	Well	288			22.3	7.27		677	63.7	1.8	Averaged well #1, #2 and #3.
7/30/20	8:40	8	Well	880									
7/30/20	11:55	9	Well	406			29.2	6.79		1044			No water level access; sampling point is for 500+ feet from well.
7/30/20	8:45	10	Well	316			22	7		734	22.05	1.7	
7/30/20	11:10	11	Well	332			22.7	7		717	13.2	2.5	
7/30/20	11:35	12	Well	338			21.8	6.99		838			No water level access
7/30/20	8:00	301	Spring	318			23	7.6	7.2	691			No flow measured.
7/30/20	8:10	302	Spring	320			22.2	7	6.25	697			No flow measured.
7/30/20	12:55	7	Groundwater	302			22.7	7		674	34.5	1	
7/30/20	12:30	14	Groundwater	324			21.5	6.98		675	15.7	1.3	
7/30/20	13:10	15	Groundwater	376			22.1	7.09		955	19.5	1.2	
7/30/20	11:20	CC1	Creek	318			23.8	7	5	697			
7/30/20	11:35	LCC15	Creek	338			26.1	7.6	6.4	736			
7/30/20	10:30	LCC25	Creek	330		0.153	25.4	7.5	5	724			
7/30/20	10:50	LCC30	Creek	312	43	0.045	25.2	7.3	3.1	722			
7/30/20	12:35	LCC35	Creek	318	26								
7/30/20	9:05	LCC5	Creek	298		0.45	25.8	7.8	5.8	667			
7/30/20	8:35	LCC7	Creek	326		0.099	25.4	7.5	4.3	697			5 gallon bucket flow measurement
7/30/20	10:00	LCC8	Creek	330		0.073	23.7	7.3	6.1	714			
7/30/20	10:00	LCC8 Duplicate	Creek	324									

APPENDIX D: MAP CREDITS

Figure 1 – Little Cypress Creek

United States Geological Society, Texas Natural Resources Information System, Esri, HERE, Garmin, Intermap, increment P Corp., GEBCO, USGS, FAO, NPS, NRCAN, GeoBase, IGN, Kadaster NL, Ordnance Survey, Esri Japan, METI, Esri Chain (Hong Kong), © OpenStreetMap contributors, and the GIS User Community

Figure 2 – NLCD Land Cover 2001

United States Geological Society National Land Cover Database, 2001, Texas Department of Transportation

Figure 3 – NLCD Land Cover 2016

United States Geological Society National Land Cover Database, 2016, Texas Department of Transportation

Figure 4 – Geologic Map of the Little Cypress Creek Watershed

Texas Natural Resources Information System, V.E. Barnes, 1982, Geology of the Spicewood Quadrangle, Bureau of Economic Geology Scanned, collars clipped, and georeferenced November 2014 at UT Austin Walter Geology Library by BSEACD intern Chase Svoboda.

Figure 6 – Location Map of wells with TWDB State Well Reports

V.E. Barnes, 1982, Geology of the Spicewood Quadrangle, Bureau of Economic Geology

Scanned, collars clipped, and georeferenced November 2014 at UT Austin Walter Geology Library by BSEACD intern Chase Svoboda

Figure 12 – Inferred Lateral Occurrence of Sycamore Sand/Gravel (Ksy)

V.E. Barnes, 1982, Geology of the Spicewood Quadrangle, Bureau of Economic Geology

Scanned, collars clipped, and georeferenced November 2014 at UT Austin Walter Geology Library by BSEACD intern Chase Svoboda

Figure 16 – Well yields obtained from TWDB State Well Reports

V.E. Barnes, 1982, Geology of the Spicewood Quadrangle, Bureau of Economic Geology

Scanned, collars clipped, and georeferenced November 2014 at UT Austin Walter Geology Library by BSEACD intern Chase Svoboda

Figure 17 – Surface and Groundwater Sampling Locations

Texas Natural Resources Information System, Esri, HERE, Garmin, Intermap, increment P Corp., GEBCO, USGS, FAO, NPS, NRCAN, GeoBase, IGN, Kadaster NL, Ordnance Survey, Esri Japan, METI, Esri Chain (Hong Kong), © OpenStreetMap contributors, and the GIS User Community

Figure 18 – Potentiometric surface map

USGS, FAO, NPS, NRCAN, GeoBase, IGN, Kadaster NL, Ordnance Survey, Esri Japan, METI, Esri Chain (Hong Kong), © OpenStreetMap contributors, and the GIS User Community



© Chuck Underwood



THE MEADOWS CENTER
FOR WATER AND THE ENVIRONMENT

TEXAS STATE UNIVERSITY

601 University Drive, San Marcos Texas 78666
512.245.9200 | MeadowsCenter@txstate.edu | www.MeadowsWater.org