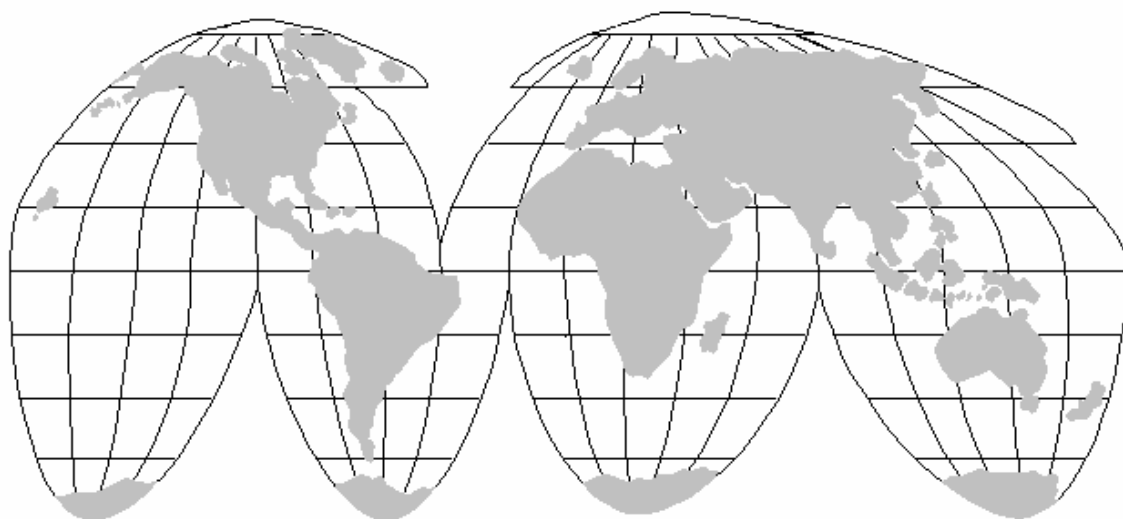


Texas State University



**UNIVERSITY
SAN MARCOS**

**INTERNATIONAL STUDENT
STATISTICAL REPORT**



Fall 2006

Prepared by the International Office
Academic Affairs

Table of Contents

1	Introduction.....	3
1.1	Why Study at Texas State University – San Marcos?	3
1.2	Who is an International Student?.....	3
1.3	The Leading Edge	3
1.4	Your Second Home - Texas State University San Marcos	3
1.4.1	Location	4
1.4.2	History.....	4
1.4.3	Colleges.....	4
1.4.4	Campus	4
1.5	About International Office – Texas State	5
2	Fall 2006 Summary.....	6
2.1	International Student Enrollment 2002 – 2006.....	6
2.2	Top Ten Enrollment by Country	8
2.3	Student Statistics at Texas State University – San Marcos.....	10
2.3.1	Cumulative GPA by International Status and Classification for Fall 2006.....	10
2.4	Statistics By Nationality	12
2.5	Geographical Statistics.....	13
2.6	Student Enrollment based on Academic College/TSIE.....	15
2.7	Top 5 Majors for International Students from Fall 2002 to Fall 2006.....	15
2.7.1	Fall 2002	15
2.7.2	Fall 2003	16
2.7.3	Fall 2004	18
2.7.4	Fall 2005	19
2.7.5	Fall 2006	20
2.8	International Students statistics from Fall 2002 through Fall 2006.....	21
2.9	International Students statistics based on Academic Classification - Fall 2006.....	22
2.10	International Students Gender Breakdown - Fall 2006.....	23
2.11	International Students Residence Statistics - Fall 2006.....	23
2.12	Texas State International Student Trends: 2002 – 2005	24

1 Introduction

1.1 Why Study at Texas State University – San Marcos?

Texas State University – San Marcos is an international-student friendly institution. EducationUSA, which is a program of the U.S. Department of State Bureau of Educational and Cultural Affairs, has defined international-friendly institutions as institutions that “recognize that in an increasingly interdependent world there is educational value in having international students on the campus”.

Texas State recognizes the value international students bring to our institution and it is committed to providing international students with an enriching education experience. The professional staff at the International Office maintains membership in appropriate international educational organizations and associations to be actively engaged in the many regulatory, educational, and cultural issues related to international students. Texas State also provides special programs for international students to assist them in achieving a successful transition into our University. Some of these programs include an international student orientation, short term housing accommodations, and options for additional English instruction for non-native speakers.

Overall Texas State is a friendly campus that has a lot to offer international students: prestigious programs, beautiful parks and campus, artistic, cultural, political and athletic events, and a convenient location in close proximity to two of the most eclectic cities in Texas, Austin and San Antonio.

1.2 Who is an International Student?

An international student is a student who enrolls in a U.S. academic program and whose status is non-immigrant. Common non-immigrant statuses are A-1, A-2, B1, B-2, E-1, E-2, F-1, F-2, H-1, H-4, J-1, J-2, L-1, L-2, M-1, R-1 and R-2. F-1 is the most common status used by international students. A student who has applied for or received permanent residency, refugee status or asylum in the U.S. is not considered to be an international student by the Immigration and Naturalization Service.

1.3 The Leading Edge

While studying in the U.S.A., you will be exposed to some of the most up-to-date developments in technology. The U.S.A. is the leader in many areas of technology. You may be fortunate enough to meet, and even study, with the leading scholars in your chosen field. Why not study with the best?

Studying in the U.S.A. will exhilarate you. It will change the landscape of your life permanently. We guarantee that you will return home changed: more confident, more open and knowledgeable, a citizen of the world with a much broader perspective!

1.4 Your Second Home - Texas State University San Marcos

Completed in 1903 the red-roofed, castle-like landmark Old Main is Texas State's first building. Texas State University-San Marcos is a doctoral granting university located in the

burgeoning Austin-San Antonio corridor, the largest campus in the Texas State University System, and one of the 75 largest universities in the country.

Texas State's 27,503 students choose from 115 undergraduate and 84 masters and 6 Ph.D. graduate degree programs offered by seven colleges (Applied Arts, McCoy College of Business Administration, Education, Fine Arts and Communication, Health Professions, Liberal Arts, and Science), the University College, and the Graduate College.

With a diverse campus community including over 28% of the student body from ethnic minorities, Texas State is one of the top 20 producers of Hispanic baccalaureate graduates in the nation. See the University Fact book for more information.

In the fall of 2004, there were 903 full-time faculty and 1,450 full-time staff.

Texas State is also the lead institution of a multi-institution teaching center offering several programs in the greater north Austin area. There are 1,586 Texas State students enrolled at the Round Rock Higher Education Center (RRHEC).

1.4.1 Location

Located on the edge of the Texas Hill Country, where black land prairies turn in to beautiful hills, Texas State enjoys a setting that is unique among Texas universities. The beauty of the crystal-clear San Marcos River and the stately cypress and pecan trees on the campus adds to the charm of its picturesque settings. The campus is in San Marcos, a community about halfway between Austin and San Antonio. Its location on the banks of the San Marcos River provides recreational and leisure activities for students throughout the year.



1.4.2 History

Authorized by the Texas Legislature in 1899, Southwest Texas State Normal School opened its doors in 1903. Over the years the Legislature broadened the institution's scope and changed its name, in succession, to Normal College, Teachers College, College, University, and in 2003 to Texas State University-San Marcos. Each name reflects the university's growth from a small teacher preparation institution to a major, multipurpose university. Texas State's original mission was to prepare Texas public school teachers, especially those of south central Texas. It became renowned for carrying out this mission, but today it does far more.

1.4.3 Colleges

The University offers programs in colleges of Applied Arts, Business Administration, Education, Fine Arts and Communication, Health Professions, Liberal Arts, and Science. In 1986 the University College was created to assure a broad general education for all students, regardless of major. In 1935 the Board of Regents authorized the formation of The Graduate College.

1.4.4 Campus

As the university's student population has grown - from 303 in 1903 to 27,503 in 2006 - the campus, too, has expanded, and today consists of a 456-acre main campus and 5,000 additional acres in recreational, instructional, farm and ranch land. Overlooking the campus and serving as a landmark since 1903 is Old Main, a red-gabled Victorian building restored to

its original grandeur. In 1979, after adding a number of classroom buildings and residence halls, the university purchased the former San Marcos Baptist Academy adjacent to the original campus. In 1994 the 90-acre Aquarena Springs theme park, also adjacent to the main campus, was purchased. Campus facilities encourage a feeling that Texas State is a special place.

1.5 About International Office – Texas State

The International Office is committed to promoting diversity at Texas State University by supporting international students and the University community with specialized services and by globally marketing Texas State's educational programs.

Robert M. Seese, Ed. D.
Director, International Office
Texas State University-San Marcos

Report compiled by

Laura Cano Amaya
Coordinator, International Office
Texas State University-San Marcos

Sampath Jayarathna
Graduate Research Assistant,
International Office
Texas State University-San Marcos

2 Fall 2006 Summary

A total of 493 students from abroad, representing 80 countries, claim Texas State University San Marcos as their home this fall semester.

From the total number of 27485 enrolled students, 1.79% comprised by the International Student body.

International undergraduate students comprise 2.1% of the total undergraduate body, from 23568 total undergraduate students.

A total of 193 international graduate and professional students represent 4.9% of all students at this level of study.

School Information: Texas State University -San Marcos		
Student Body: Coed	Calendar: Semester	Highest Offering: Post-doctoral research

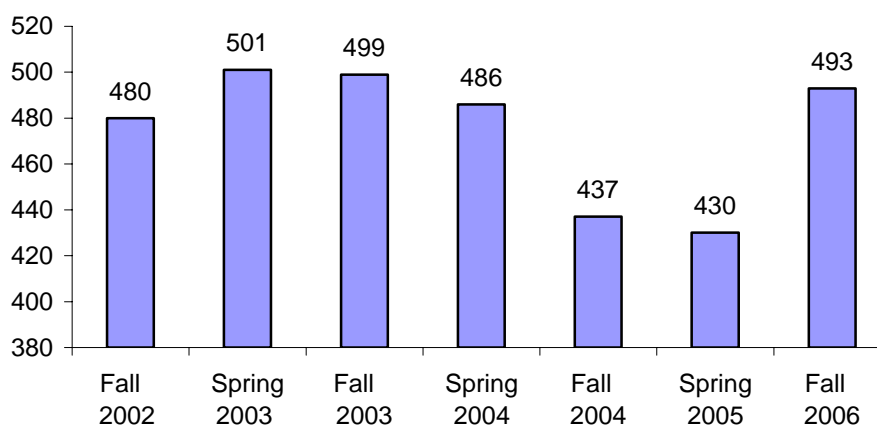
International Students Enrollments: 2006 Fall			
Undergraduates: 257	Graduates: 193	Other: 43*	Total: 410** OPT: 83

*Others include Post Graduate and intensive English students.

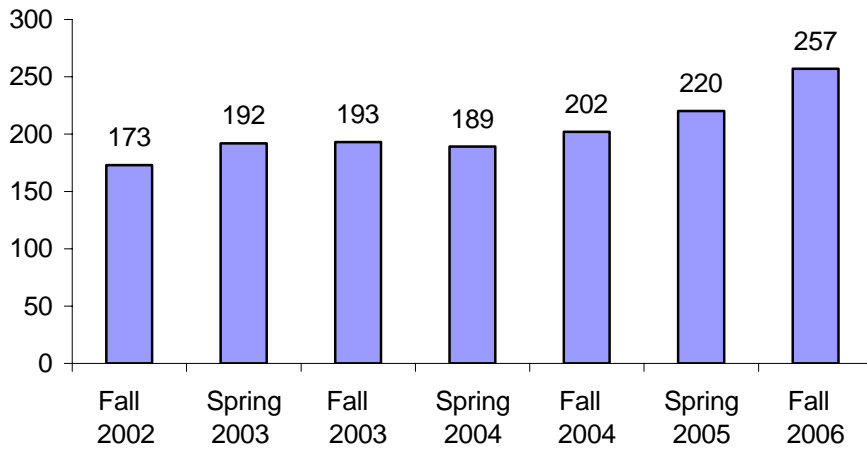
** Total number of students except OPT.

2.1 International Student Enrollment 2002 – 2006

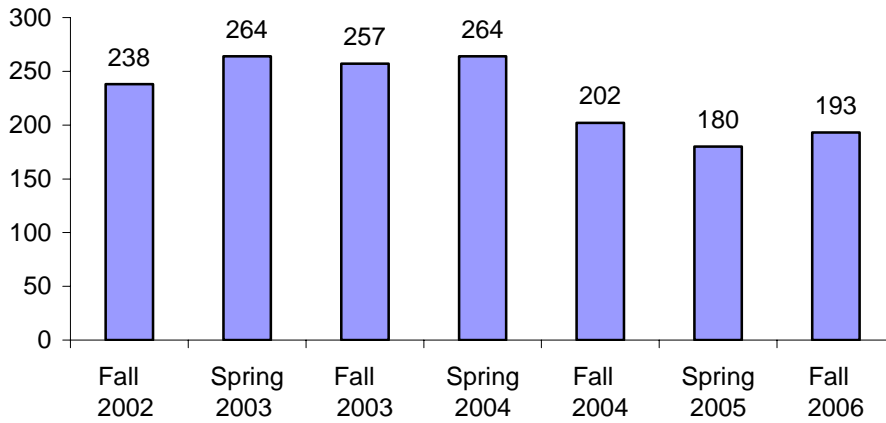
Total Enrollment



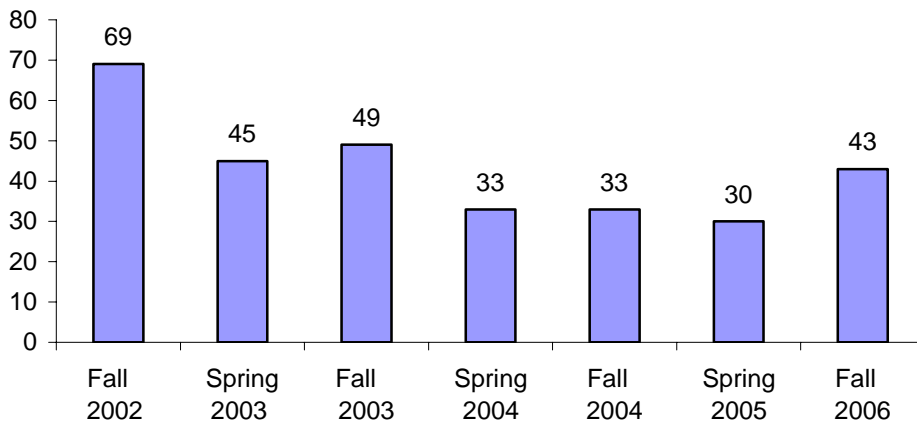
Total Undergraduate Enrollment



Total Graduate Enrollment

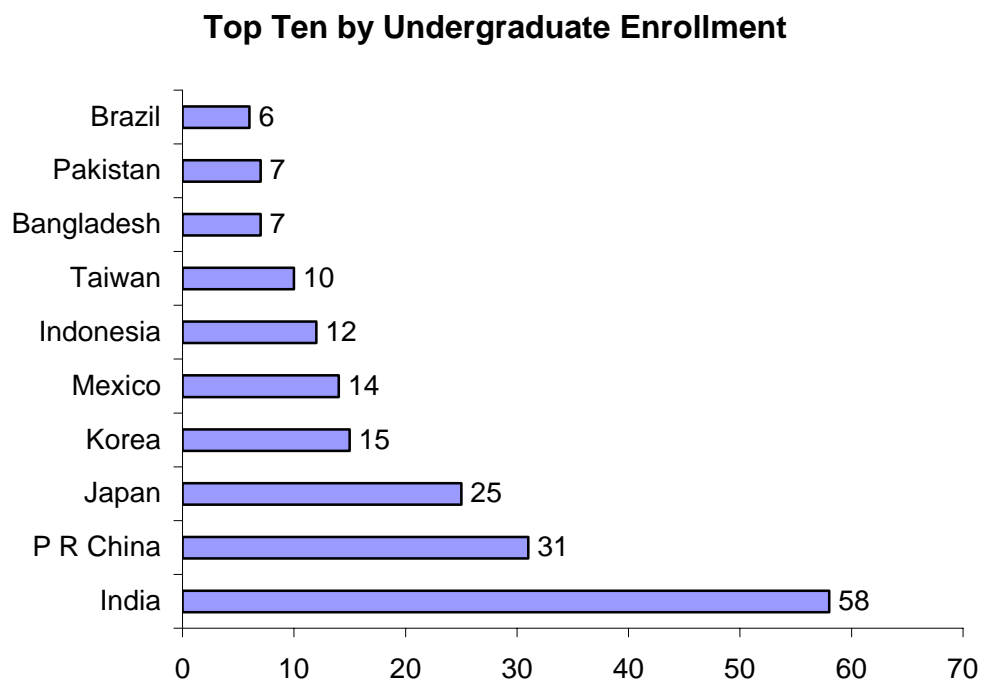
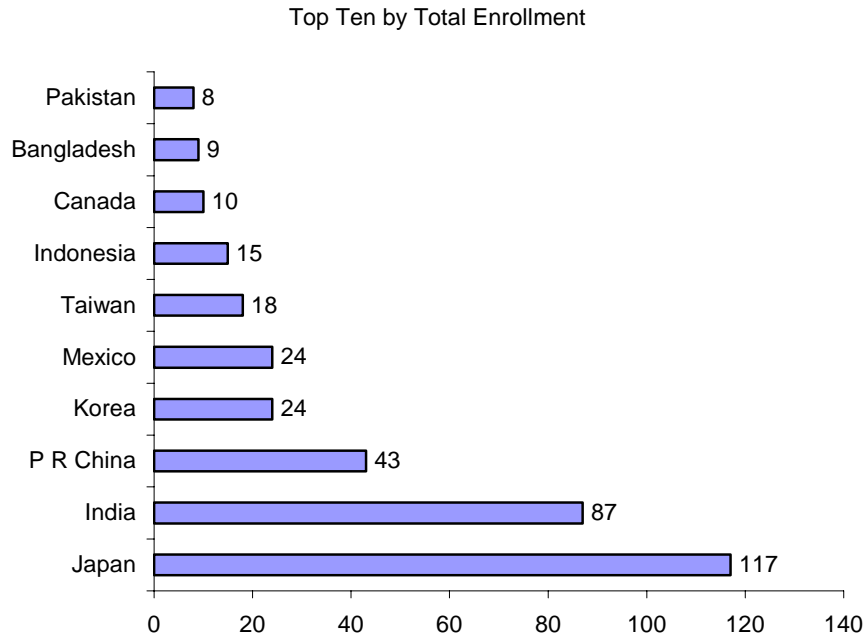


Total *Other Enrollments

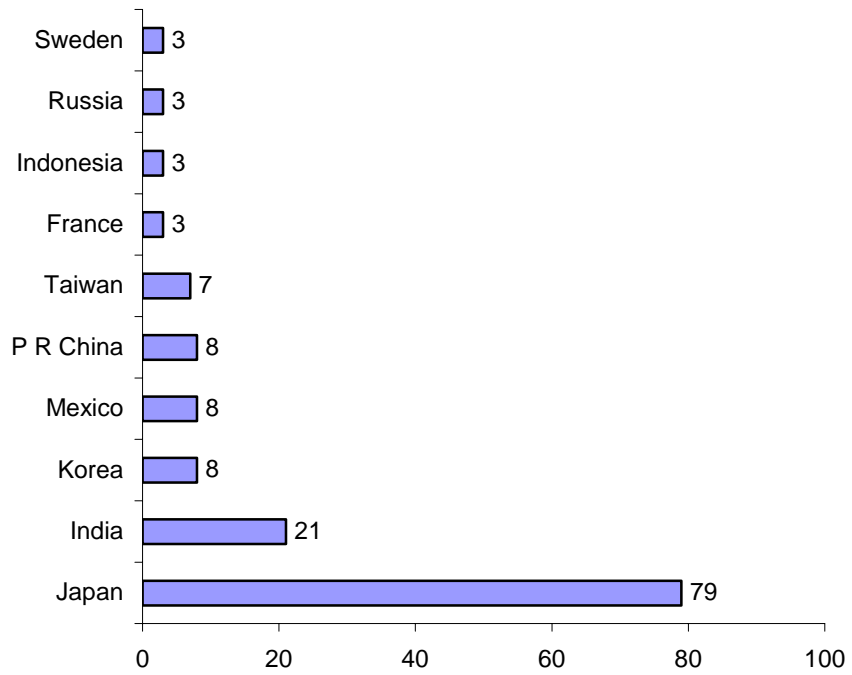


*Others include Post Graduate and intensive English students.

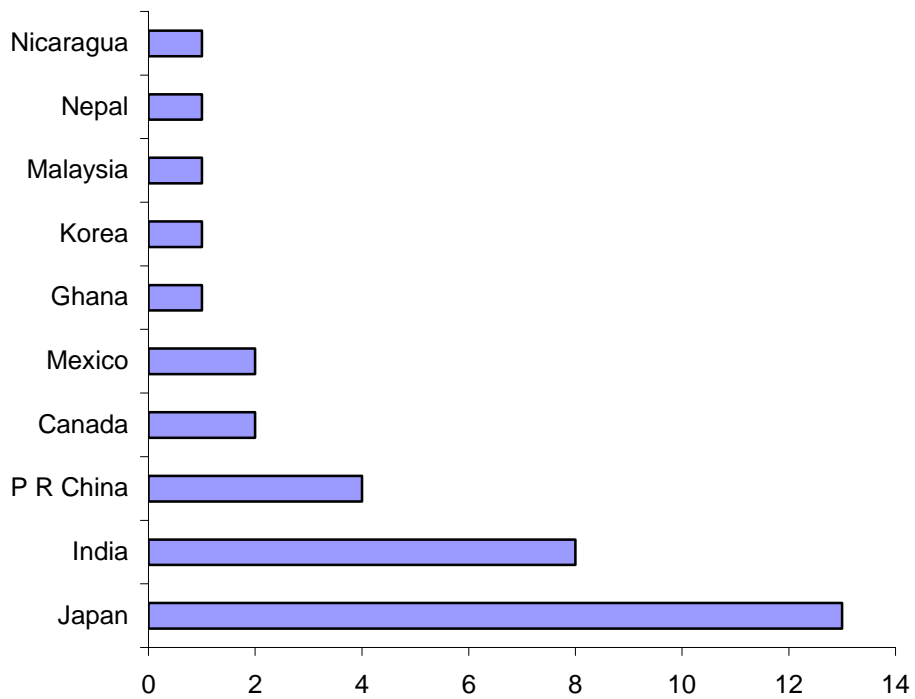
2.2 Top Ten Enrollment by Country



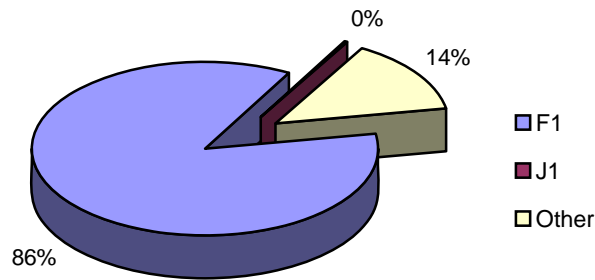
Top Ten by Graduate Enrollment



Top Ten by *Other Enrollments



2.3 Student Statistics at Texas State University – San Marcos



International Students	U.S. Citizens*	Texas State Student Total*
493	25,043	25,536
F Visa	423	
J Visa	1	
**Other Visa	69	

**Other visa include A, H, L, K, R and TN.

*Source data from Office of the Vice President for Student Affairs

	U.S.Citizens/Permanent Residents	International	Total
Undergraduates	21849	257	22106
Graduates	3194	193	3387

2.3.1 Cumulative GPA by International Status and Classification for Fall 2006

	International Cumulative GPA	Non-International Cumulative GPA
Freshman	3.23	2.51
Sophomore	3.12	2.74
Junior	3.31	2.80
Senior	3.14	2.91
Masters	3.52	3.65
Post-Bacc	3.14	3.50
Doctoral	3.72	3.92
Total	3.35	2.90
Undergrad Total	3.20	2.79

Note: International includes A2, B1, E2, F1, F2, G1, H1, H2, J1, L2

Cumulative GPA Comparison of Graduate Students in Business Administration and Elsewhere by International Status and Classification for Fall 2006

		International Cumulative GPA	Non-International Cumulative GPA
McCoy College of Business Administration	Masters	3.60	3.41
	Post-Bacc	2.92	2.72
	Total	3.53	3.37
Other Colleges	Masters	3.50	3.68
	Post-Bacc	3.22	3.54
	Doctoral	3.72	3.92
	Total	3.51	3.68
Total	Masters	3.52	3.65
	Post-Bacc	3.14	3.50
	Doctoral	3.72	3.92
	Total	3.51	3.65
Note: International includes A2, B1, E2, F1, F2, G1, H1, H2, J1, L2			

Comparison of Cumulative GPA of Graduate Students in Computer Science, Computer Info Systems and Elsewhere by International Status and Classification

		International Cumulative GPA	Non-International Cumulative GPA
Computer Science	Masters	3.42	3.53
	Post-Bacc	2.92	3.03
	Total	3.40	3.41
Other Departments	Masters	3.59	3.65
	Post-Bacc	3.22	3.53
	Doctoral	3.72	3.92
	Total	3.58	3.65
Total	Masters	3.52	3.65
	Post-Bacc	3.14	3.50
	Doctoral	3.72	3.92
	Total	3.51	3.65

2.4 Statistics By Nationality

Country	Undergraduate	Graduate	Other	Total
Albania	0	1	0	1
Argentina	2	1	0	3
Australia	2	0	0	2
Azerbaijan	1	0	0	1
Bangladesh	7	2	0	9
Barbados	1	1	0	2
Bolivia	2	0	0	2
Bosnia and Herzegovina	1	0	0	1
Brazil	6	1	0	7
Cameroon	0	1	0	1
Canada	6	2	2	10
Colombia	4	1	0	5
Costa Rica	1	0	0	1
Cote D'Ivoire	0	2	0	2
Curacao	1	0	0	1
Ecuador	4	1	0	5
Egypt	0	1	0	1
El Salvador	1	0	0	1
Eritrea	0	1	0	1
Ethiopia	1	1	0	2
Finland	1	0	0	1
France	0	3	0	3
Georgia	0	1	0	1
Germany	2	1	0	3
Ghana	1	1	1	3
Great Britain	1	1	0	2
Hong Kong	4	0	0	4
India	58	21	8	87
Indonesia	12	3	0	15
Iran	2	0	0	2
Israel	1	1	0	2
Italy	1	1	0	2
Jamaica	2	0	0	2
Japan	25	79	13	117
Jordan	1	0	0	1
Kenya	0	1	0	1
Korea	15	8	1	24
Kuwait	1	0	0	1
Latvia	0	1	0	1
Lebanon	1	1	0	2
Madagascar	1	0	0	1
Malaysia	0	1	1	2
Mexico	14	8	2	24
Moldova	0	1	0	1
Mongolia	0	1	0	1
Morocco	2	1	0	3
Nepal	1	2	1	4

Netherlands	0	2	0	2
Nicaragua	0	0	1	1
Niger	0	1	0	1
Nigeria	0	1	0	1
Norway	1	0	0	1
P R China	31	8	4	43
Pakistan	7	1	0	8
Panama	0	1	0	1
Paraguay	1	0	0	1
Peru	0	0	1	1
Philippines	1	0	0	1
Russia	2	3	0	5
Scotland	0	0	1	1
Senegal	0	1	0	1
Serbia	1	0	0	1
Sierra Leone	1	0	0	1
Singapore	1	0	0	1
Slovenia	1	0	0	1
South Africa	1	2	0	3
Spain	1	1	0	2
Sri Lanka	0	1	0	1
St. Kitts and Nevis	0	0	1	1
Sweden	1	3	1	5
Switzerland	0	0	1	1
Taiwan	10	7	1	18
Thailand	4	2	1	6
Turkey	1	0	0	1
Uganda	0	1	0	1
Ukraine	0	0	1	1
United Kingdom	0	1	0	1
Venezuela	1	3	0	4
Zambia	2	3	1	6
Zimbabwe	0	1	0	1
Totals	254	195	44	493
A total of 80 countries were represented this semester				

2.5 Geographical Statistics

	Undergraduate	Graduate	Other	Total
Africa				
Egypt	0	1	0	1
Ethiopia	1	1	0	2
Ghana	1	1	1	3
Kenya	0	1	0	1
Madagascar	1	0	0	1
Morocco	2	1	0	3
Nigeria	0	1	0	1
South Africa	1	2	0	3
Uganda	0	1	0	1

Zambia	2	3	1	6
Asia				
Bangladesh	7	2	0	9
(PR) China	31	8	4	43
Georgia	0	1	0	1
Hong Kong (SAR)	4	0	0	4
India	58	21	8	87
Indonesia	12	3	0	15
Japan	25	79	13	117
Korea, Republic of	15	8	1	24
Malaysia	0	1	1	2
Mongolia	0	1	0	1
Nepal	1	2	1	4
Pakistan	7	1	0	8
Philippines	1	0	0	1
Taiwan	10	7	1	18
Thailand	4	2	1	6
Middle East				
Iran	2	0	0	2
Israel	1	1	0	2
Kuwait	1	0	0	1
Lebanon	1	1	0	2
Turkey	1	0	0	1
Europe				
Albania	0	1	0	1
Finland	1	0	0	1
Germany	2	1	0	3
Moldova	0	1	0	1
Netherlands	0	2	0	2
Russia	2	3	0	5
Slovenia	1	0	0	1
Spain	1	1	0	2
Sweden	1	3	1	5
Switzerland	0	0	1	1
Ukraine	0	0	1	1
United Kingdom	0	1	0	1
Latin America and the Caribbean				
Argentina	2	1	0	3
Brazil	6	1	0	7
Colombia	4	1	0	5
Costa Rica	1	0	0	1
Ecuador	4	1	0	5
Jamaica	2	0	0	2
Mexico	14	8	2	24
Venezuela	1	3	0	4

North America				
Canada	6	2	2	10
Oceania				
Australia	2	0	0	2
South America				
Bolivia	2	0	0	2

2.6 Student Enrollment based on Academic College/TSIE

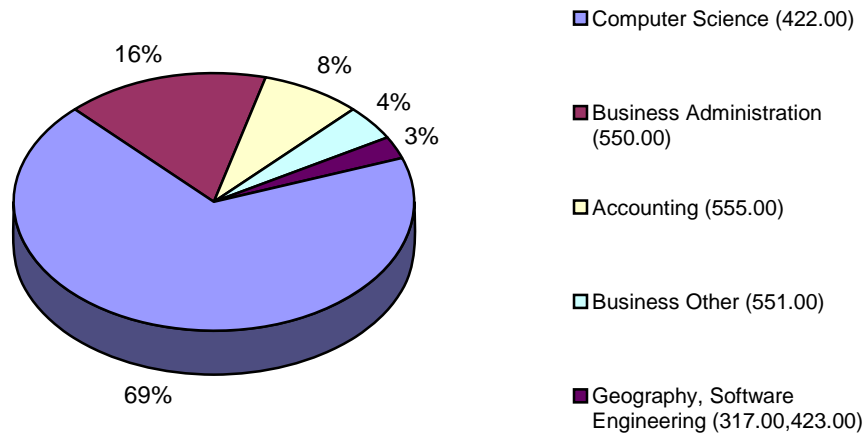
Academic Colleges/TSIE	Undergraduate	Graduate	OPT	Other	Total
College of Applied Arts	3	2	5	-	10
College of Business Administration	27	34	18	-	79
College of Education	48	14	5	-	67
College of Fine Arts & Communication	23	10	8	-	41
College of Health Professions	5	11	-	-	16
College of Liberal Arts	13	26	5	-	44
College of Science	35	82	41	-	159
University College / Undecided	61	3	1	-	65
Texas State Intensive English	-	-	-	12	12
Total	216	182	83	12	493

2.7 Top 5 Majors for International Students from Fall 2002 to Fall 2006

2.7.1 Fall 2002

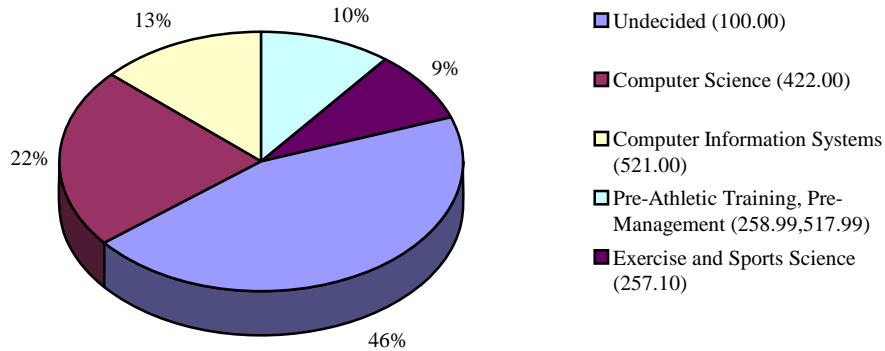
#	Major	Number of International Graduate Students
1	Computer Science (422.00)	143
2	Business Administration (550.00)	34
3	Accounting (555.00)	17
4	Business Other (551.00)	9
5	Geography, Software Engineering (317.00,423.00)	6

Number of International Graduate Students Fall 2002



#	Major	Number of International Undergraduate Students
1	Undecided (100.00)	30
2	Computer Science (422.00)	15
3	Computer Information Systems (521.00)	9
4	Pre-Athletic Training, Pre-Management (258.99, 517.99)	7
5	Exercise and Sports Science (257.10)	6

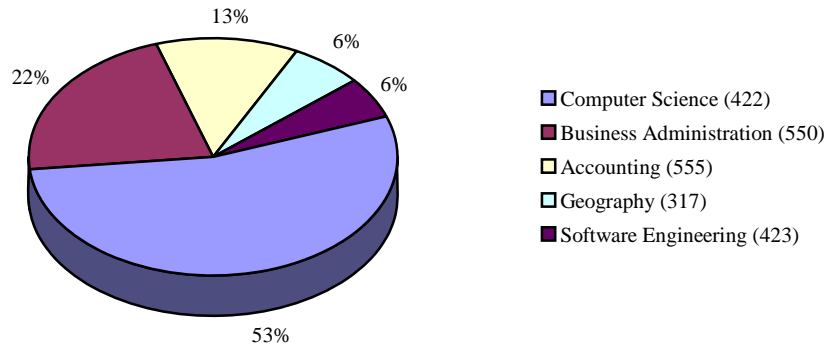
Number of International Undergraduate Students Fall 2002



2.7.2 Fall 2003

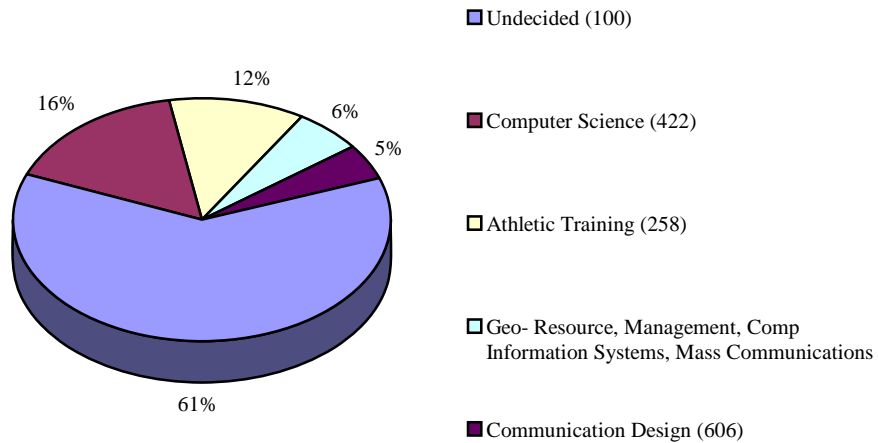
#	Major	Number of International Graduate Students
1	Computer Science (422)	95
2	Business Administration (550)	38
3	Accounting (555)	22
4	Geography (317)	11
5	Software Engineering (423)	10

Number of International Graduate Students Fall 2003



#	Major	Number of International Undergraduate Students
1	Undecided (100)	64
2	Computer Science (422)	17
3	Athletic Training (258)	12
4	Geo- Resource and En Stud, Management, Computer Information Systems, Mass Communications (315,517,521,670)	6
5	Communication Design (606)	5

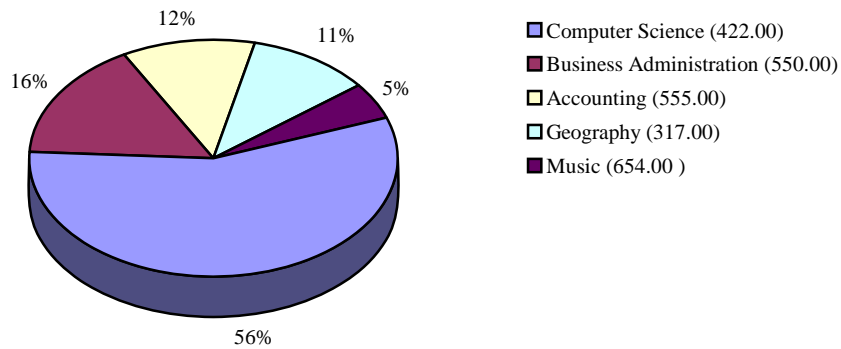
Number of International Undergraduate Students Fall 2003



2.7.3 Fall 2004

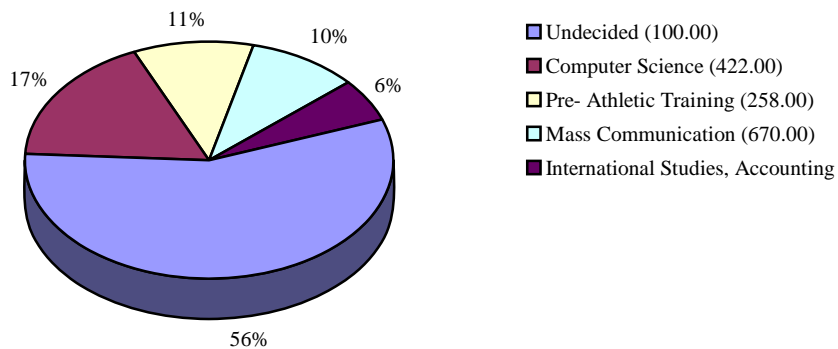
#	Major	Number of International Graduate Students
1	Computer Science (422.00)	78
2	Business Administration (550.00)	22
3	Accounting (555.00)	16
4	Geography (317.00)	15
5	Music (654.00)	7

Number of International Graduate Students Fall 2004



#	Major	Number of International Undergraduate Students
1	Undecided (100.00)	58
2	Computer Science (422.00)	18
3	Pre- Athletic Training (258.00)	11
4	Mass Communication (670.00)	10
5	International Studies, Accounting (330.00,511.00)	6

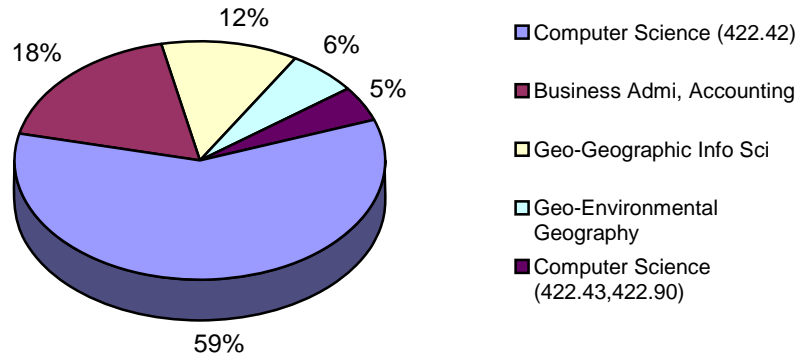
Number of International Undergraduate Students Fall 2004



2.7.4 Fall 2005

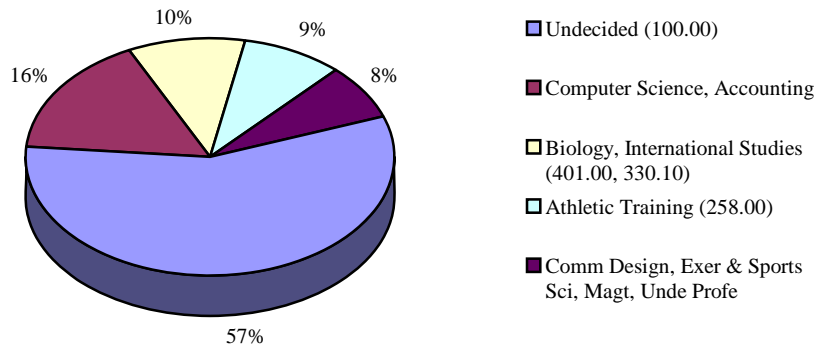
#	Major	Number of International Graduate Students
1	Computer Science (422.42)	49
2	Business Administration, Accounting (550.00,555.00)	15
3	Geo-Geographic Info Science (317.63)	10
4	Geo-Environmental Geography (317.61)	5
5	Computer Science (422.43,422.90)	4

Number of International Graduate Students Fall 2005



#	Major	Number of International Undergraduate Students
1	Undecided (100.00)	45
2	Computer Science, Accounting	13
3	Biology, International Studies	8
4	Athletic Training (258.00)	7
5	Communication Design, Exercise & Sports Science, Management, Undecided Professional	6

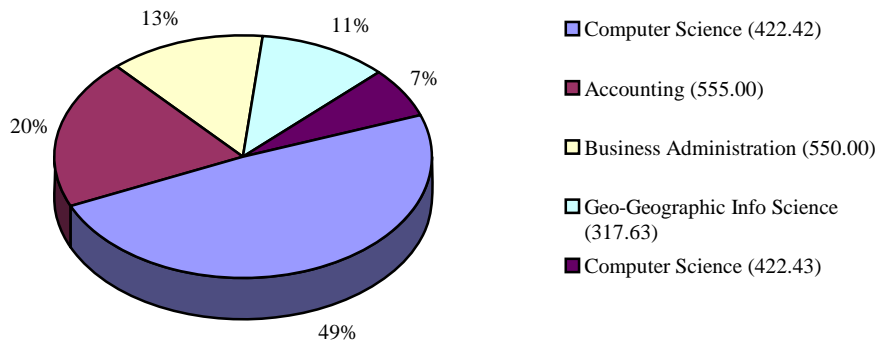
Number of International Undergraduate Students Fall 2005



2.7.5 Fall 2006

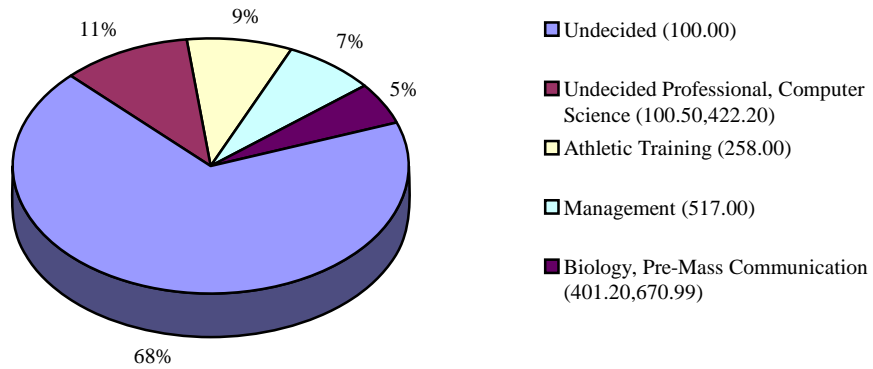
#	Major	Number of International Graduate Students
1	Computer Science (422.42)	44
2	Accounting (555.00)	18
3	Business Administration (550.00)	12
4	Geo-Geographic Info Science	10
5	Computer Science (422.43)	6

Number of International Graduate Students Fall 2006



#	Major	Number of International Undergraduate Students
1	Undecided (100.00)	64
2	Undecided Professional, Computer Science	10
3	Athletic Training (258.00)	8
4	Management (517.00)	7
5	Biology, Pre-Mass Communication	5

Number of International Undergraduate Students Fall 2006

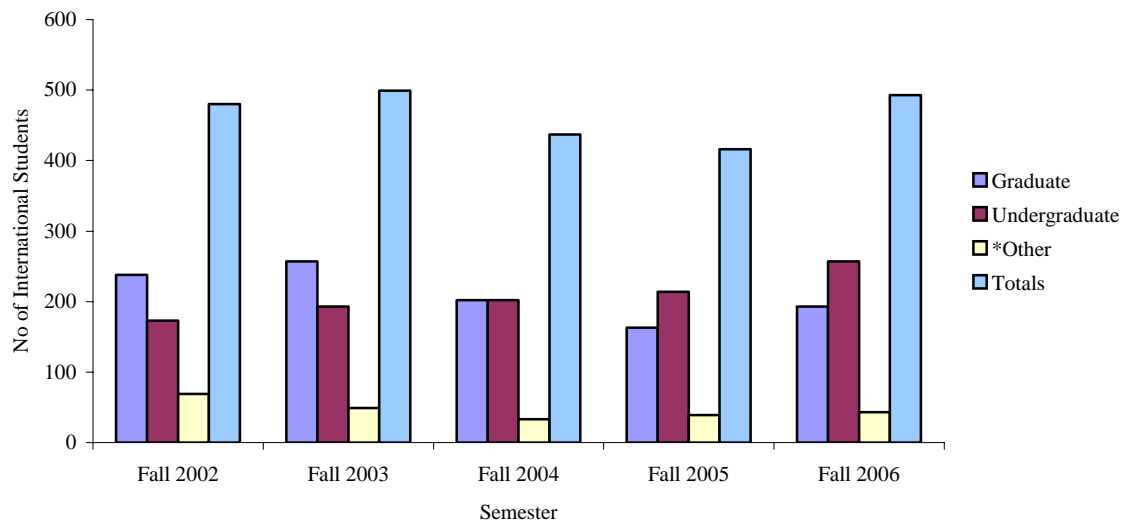


2.8 International Students statistics from Fall 2002 through Fall 2006

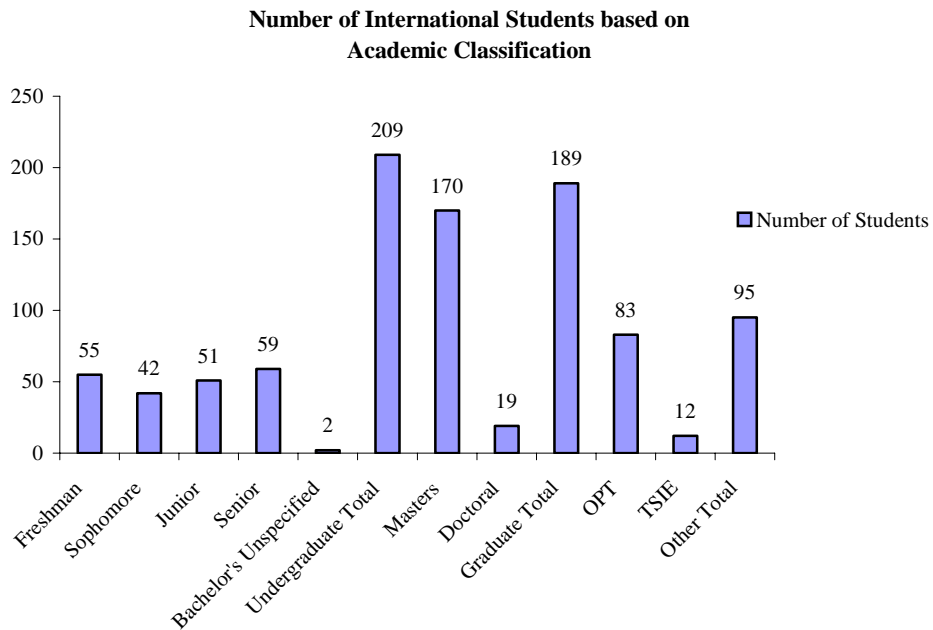
Semester	Graduate	Undergraduate	*Other	Totals
Fall 2002	238	173	69	480
Fall 2003	257	193	49	499
Fall 2004	202	202	33	437
Fall 2005	163	214	39	416
Fall 2006	193	257	43	493

*Others include Post Graduate and Intensive English students.

International Students statistics from Fall 2002 through Fall 2006



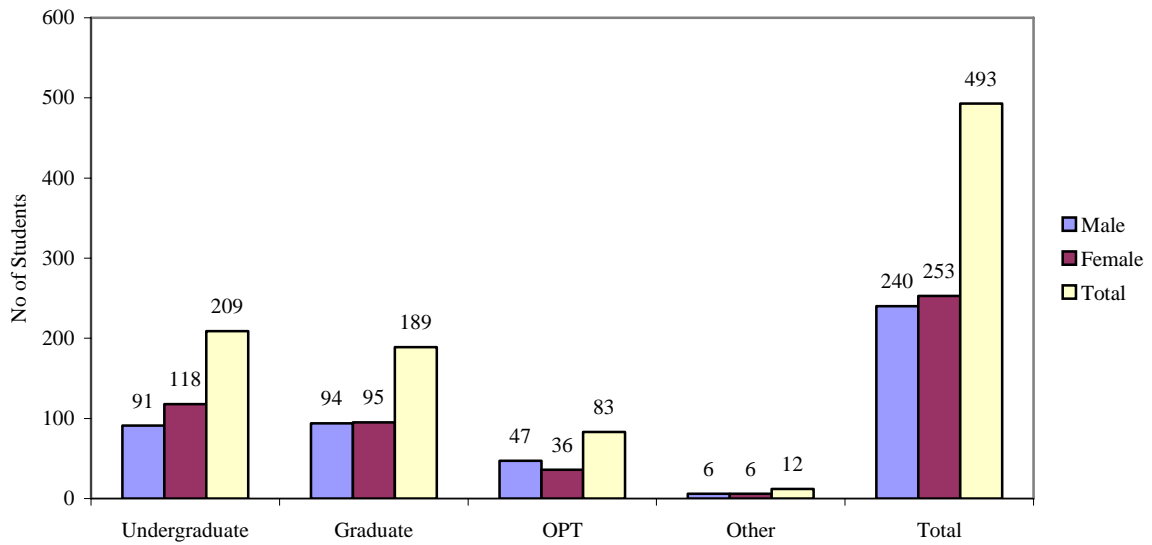
2.9 International Students statistics based on Academic Classification - Fall 2006



International Students Academic Classification	
Bachelors	
	Number of students
Freshman	55
Sophomore	42
Junior	51
Senior	59
Bachelors Unspecified	2
Undergraduate Total	209
Graduate	
	Number of students
Masters	170
Doctoral	19
Graduate Total	189
Other	
	Number of students
OPT	83
Intensive English	12
Others Total	95

2.10 International Students Gender Breakdown - Fall 2006

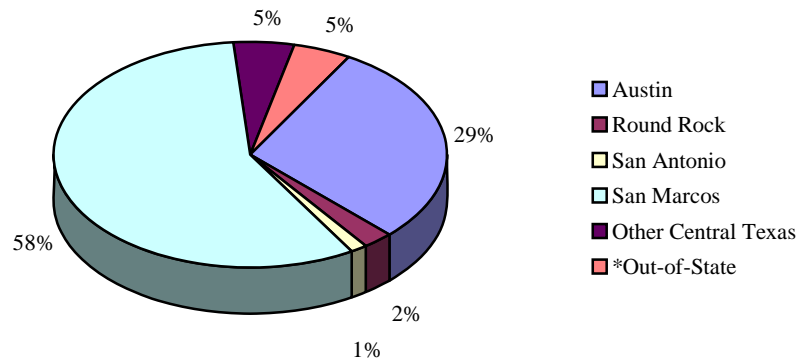
International Students Gender Breakdown - Fall 2006



International Student Gender Breakdown – Fall 2006					
Gender	Undergraduate	Graduate	OPT	Other	Total
Male	91	94	47	6	240
Female	118	95	36	6	253
Total	209	189	83	12	493

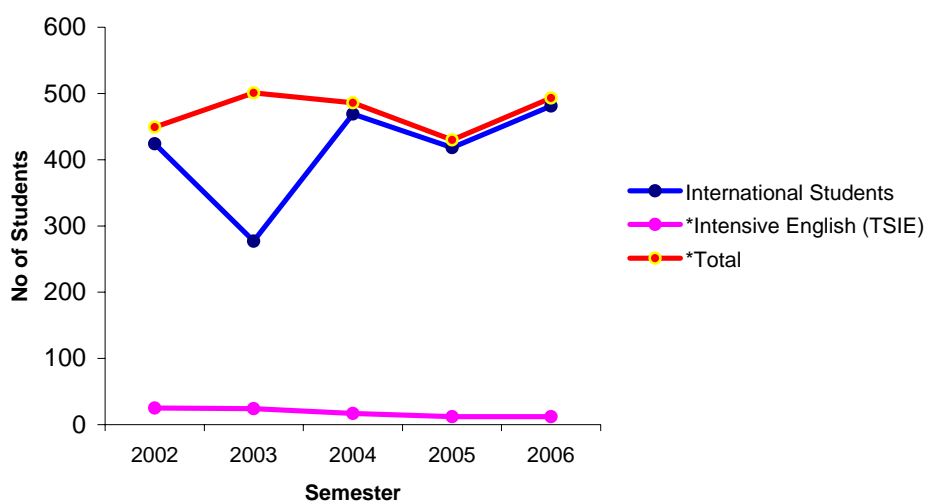
2.11 International Students Residence Statistics - Fall 2006

International Students Residence Statistics
Fall 2006



Residence City	Number of Students
Austin	114
Round Rock	12
San Antonio	7
San Marcos	282
Other Central Texas	25
*Out of States	25
Total	493
* Includes students in practical Training and National exchange programs	

2.12 Texas State International Student Trends: 2002 – 2005



Year	International Students	*Intensive English (TSIE)	*Total	Comparison [%]
2002	424	25	449	
2003	477	24	501	+52[11.58%]
2004	469	17	486	-15[-2.99%]
2005	418	12	430	-56[-11.52%]
2006	481	12	493	+63[14.65%]

Totals for Intensive English vary between the first and second halves of each semester. Therefore, these numbers will vary depending on when data were obtained