

## OPERATION MANUAL FOR THE WESTBOND 7476



- Turn on power switch located on the power box.
- If the work holder is heated, turn on switch on small heater box
- The light under the microscope will turn on
- Clamp the carrier to be bonded onto the work holder.
- Make sure that it is securely held and does not move.
- The wedge tool should always be just above the work surface.
- By lifting the manipulator arm, the tool can be moved out of the way.



- Adjust the stage up or down by moving the knob in the front

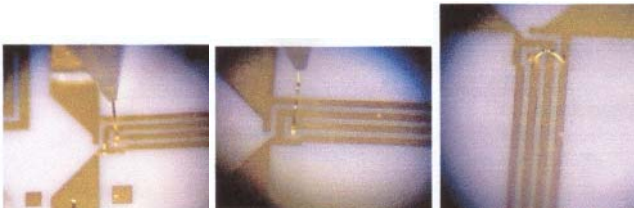


- You are now ready to make your first bond
- Using the manipulator arm, target the bond pad under the microscope and move the wedge tool over the bond pad.
- When the tool makes contact with the bond pad, a beep will sound. The bond will then be activated and the wire will stick to the bond pad.

- Lift the manipulator arm and move it in an upward and forward motion. The wire will follow and you can move to the 2<sup>nd</sup> bond position.



- After finishing the second bond, lift the manipulator arm and a new piece of wire will be pushed out under the tool.



- You are now ready for a new bond.



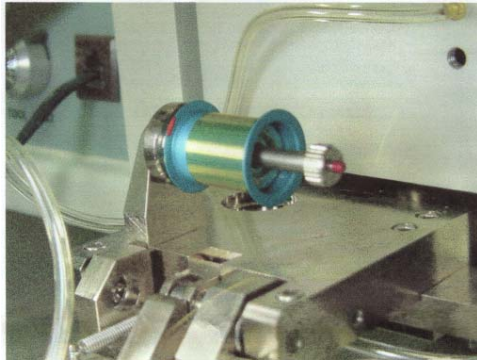
- The wedge tool feeds from the back and the hole cannot be seen from the front. A straight piece of wire is very important when threading the tool. If the wire is bent or kinked at all, it will not feed through the hole.



- The coil, as pictured in the photo above is used to heat the tool for low heat applications. If a minimum amount of heat is on the work holder, then the tool can be heated to help the bond to adhere. The tool heat adjustment knob is in the front of the machine.



- The actual heat on the tool can be measured with a thermo couple.
- The clamp can be opened and closed by the switch on the front panel. To thread the tool, open the clamp and feed the wire through the hole. Pull out a good sized piece and then close the clamp and bond off at a neutral site and you are ready for another bond.
- The wire spool size may be  $\frac{1}{2}$  inch or 2 inch.
- Make sure the wire feeds off the spool from the top.



- In order to make a loop lift up and move up at the same time you are going to the 2nd bond site. Overshoot the 2nd bond pad slightly; move back and the wire will bend into a loop. Finish the bond and continue to the next bond pad.