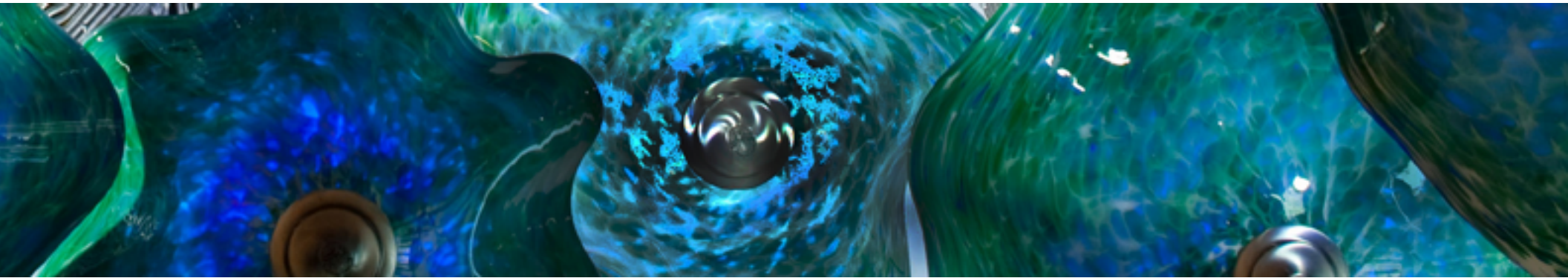




WIMBERLEY  
GLASSWORKS



Art Glass Lighting by Tim de Jong

# WIMBERLEY GLASSWORKS

Tim de Jong & Design Team



Wimberley Glassworks can help you design, build, and install amazing hand crafted art glass lighting. Our professional team of artists and designers can engineer pieces to your exact specifications or create a completely customized proposal that will be open minded and creative, yet integrated and realistic.



(Images: Above - Tim de Jong, Opposite - The Crew, Charles Camacho Lighting Designer)



## EDUCATION

Temple University's Tyler School of Art, Philadelphia

Bachelor of Fine Arts - Glass

Alfred University, New York

Study of ceramics, sculpture, and glass.

## PROFESSIONAL EXPERIENCE

Wimberley Glassworks

President, CEO, Head Gaffer, and Designer

Carriage House

Owner and Head Gaffer

Art Park - Lewiston, New York

Swedish Glassblowing Apprenticeship

## PROFESSIONAL AFFILIATIONS

Wimberley Chamber of Commerce

San Marcos Chamber of Commerce

Wimberley Merchants Association

Texas Society of Architects

## CORPORATE PROJECTS

Patrick Nolan, Curator, Sam Houston Memorial Museum

Foyer, *Texas Star Chandelier*

David Cunningham, Director, Construction, Granite Properties

BOKA Powell - Architect Granite Park III, *Oak Tree Chandelier*

Staffelbach - Interior Architect Granite Park III Offices, *Entry Chandelier*

Interprise Design - Interior Architects Spectrum Center, *Falling Embers*

Kirksey Architecture Westchase II, *Sunrise at Matagorda Bay*

Good Fulton & Farrell Architects Park 17, *Soft Motion*

James O'Neill, AIA, Inventure Design,

Interior Architect for Texas Children's Hospital

Pavilion for Women, *The Jewel*

Whitney Harris & Mark Smith, Co-owners, ESPY Corporation

Offices, *Hover Chandelier*

Lobby, *Riverstone Ensemble*

Olutola Adetona MD & Omolola Adetona DDS,

Practical Approach Pediatrics

Waiting room, *Riverstone Ensemble*

Over 11,000 private collections.





# WIMBERLEY GLASSWORKS

## Tim's Story

In retrospect, a frosty evening at Niagara Falls, Canada doesn't compel most to do anything but stay warm. Single digit temperatures usually inspire people to stay indoors rather than encourage a creative revelation. Bracing the cold and while the sun was still setting that evening in January 1980, a young aspiring glassblower found himself alone amongst the mist and cast iron fencing that exists throughout the park.

"After wandering around for awhile, I noticed how the mist from the Canadian falls had accumulated on the ironwork of the fencing. It was several inches thick capturing the reflection the ironwork and the glowing color of the sunset."

Awestruck by the spectacle unfolding before his eyes, the young artist, despite the cold and wet conditions, continued to study the natural phenomenon. Fascinated by the interplay between light and color, the artist found him self experiencing what would later prove to be a pivotal and life altering moment in his life.

"The mist had built up layers of ice about two to three feet thick on the lanterns lighting the pathways at the falls. When the sun dipped below the horizon and with the lanterns lit, it was a sight to behold! It was so exciting that I stayed late into the evening studying each lantern and how the different layers of ice lit up."

Born out of the frosty environs of southern Canada, a source of inspiration surfaced and fostered an invigorating shift in focus for the young artist. From that moment on, the young artist embarked on a journey whose story in becoming a glassblower is still being written thirty-two years later.

"From that day forth I have been totally fascinated with light and its effect on ice, snow and of course..., glass."

Since that fateful day, Tim DeJong has attended Alfred University in New York and the Tyler School of Art in Philadelphia, where he studied ceramics, sculpture, printmaking, and glass. Utilizing the medium as a vehicle for artistic exploration and with visits to such countries as Italy and China, Tim DeJong has since traveled the world in efforts to obtain as much experience with glass as possible.

# WIMBERLEY GLASSWORKS

## Our History



Continually exploring the boundaries between form and function, the studio entertains a variety of designs. For twenty years the Glasswork's reputation has been founded upon creating the finest hand blown glass in Texas. After years of mostly tourist based business, Wimberley Glassworks embarked upon the art glass lighting market, where it has maintained a nationwide presence ever since. Development of the *Mediterranean Series* spawned a plethora of color patterns, sculptural in vessel form, as well as lighting. In 2005, an earlier collaborative relationship between metal artist Jimmy Harwell and Tim de Jong lead to one of our most ambitious commissions, the *Oak Tree Chandelier*. In the mid summer of 2006, Wimberley Glassworks moved into it's new state of the art 6,500 square foot facility and consequently provided the company with its first *Business of the Year Award* which also precipitated the Texas Commission of the Arts Award as the first Texas Original in 2007! In 2009, Alfred University presented Tim de Jong with a *Distinguished Achievement Award* on behalf of his efforts with the glass medium. In the fruitful years succeeding, the studio has experienced numerous commission based projects that have fostered global interests and national recognition.

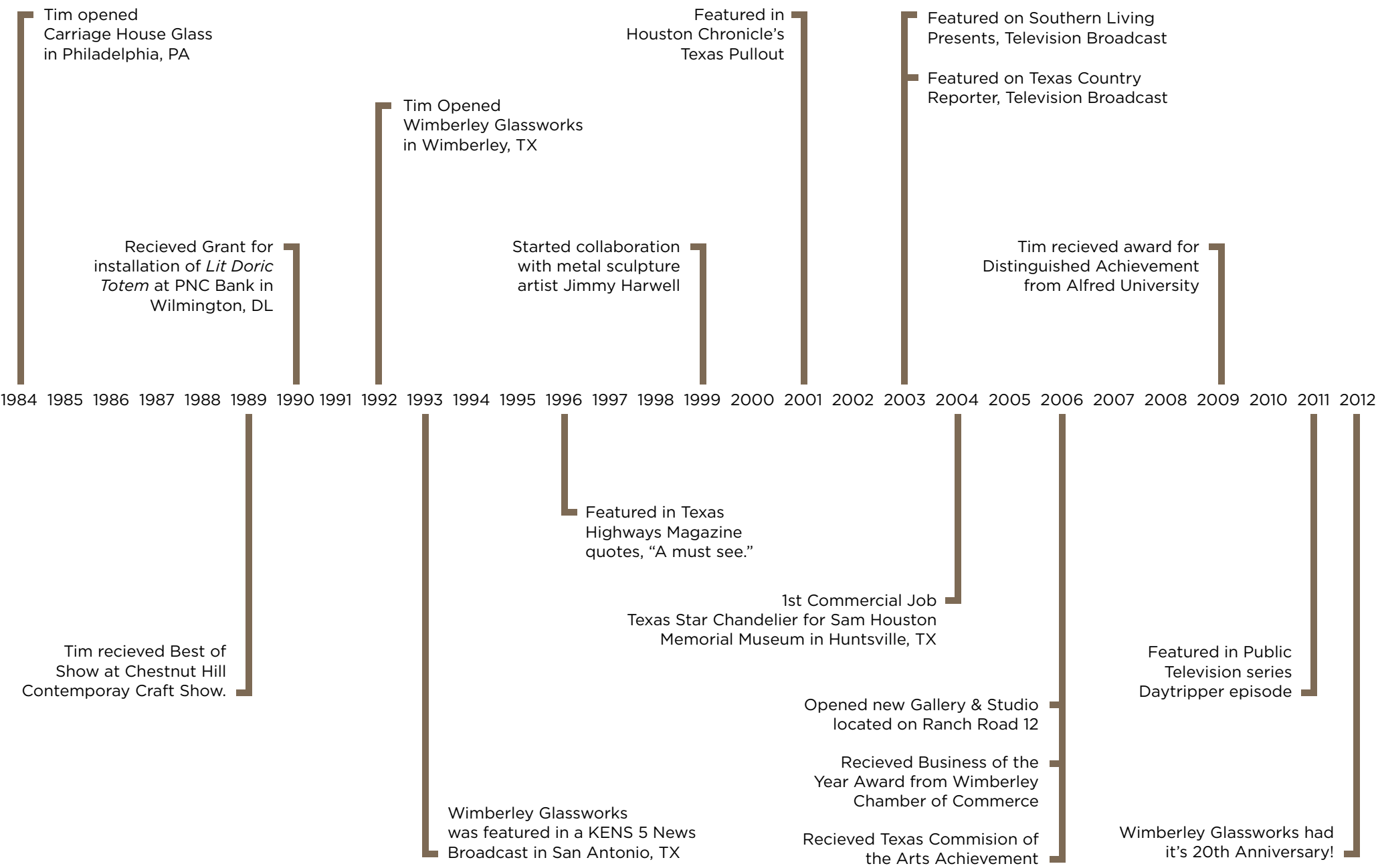






# WIMBERLEY GLASSWORKS

## Company Timeline





# WIMBERLEY GLASSWORKS

## Design Features

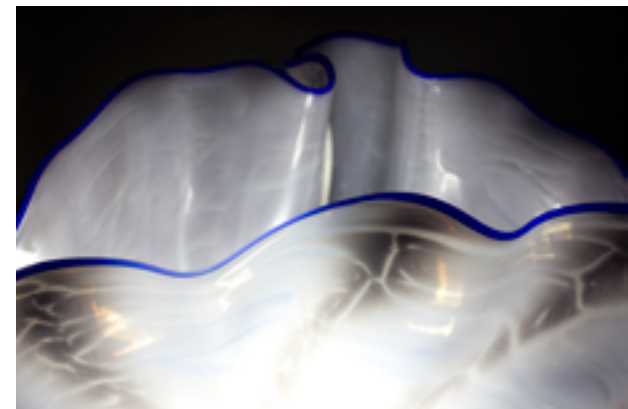
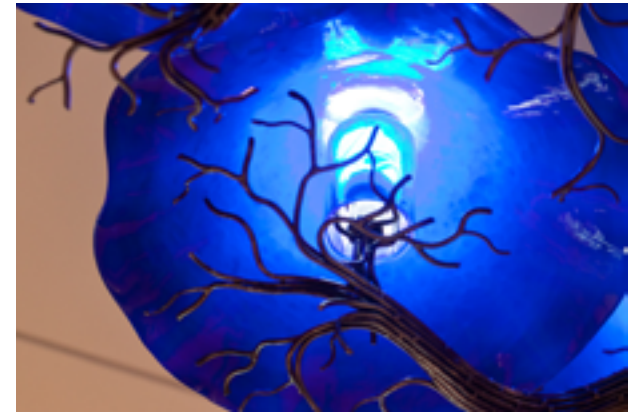
The appeal of our art glass lighting isn't just visually based, our craft transcends most conventional models and mass produced options by utilizing:

- Artist based custom designs
- Studio based design and in-house fabrication
- Custom fixtures created in collaboration with metal artists and hand fabricators
- All UL Listed
- Dimmable, LED compatible, energy efficient LEED approved options
- Designs made with consideration to maintenance and cleaning

Continually exploring the lines between illuminated form and function, our studio accommodates a variety of interior design options. For 20 years our reputation has been based on providing the highest quality hand blown glass lighting available.

*"There are a lot of studios that make lighting, there aren't a lot of studios that make lighting well. We make art glass lighting well."*

—Tim de Jong





# WIMBERLEY GLASSWORKS

## Design Procedure



Our goal is to work with the owner, the builder, and the general contractor as seamlessly as possible. Each project is delivered in a timely and uneventful manner.

Tim de Jong is present throughout the entire project. Conceptualizing begins from the first meeting, which takes into consideration the feeling the space will evoke within the surrounding architectural elements. Ideas are developed into renders for visualization purposes. 3D renders are then produced to further help visualize how the piece will work in its intended space. At this point, a physical mock-up of the piece may be built to work out any engineering or design details. Pictured top-right is a mock-up example. When the design is complete, our lighting engineer, Charles Camacho formulates an installation instruction document including j-box and fixture placement schematic, pendant overview with detailed information pertaining to stem adjustment, tie-in preparation, shade and bulb installation. Examples shown on the following page.





### FIXTURE & GLASS INSTALLATION INSTRUCTIONS

Texas Children's Hospital Maternity Center  
1st & 3rd level custom glass pendant assemblies  
July 2011

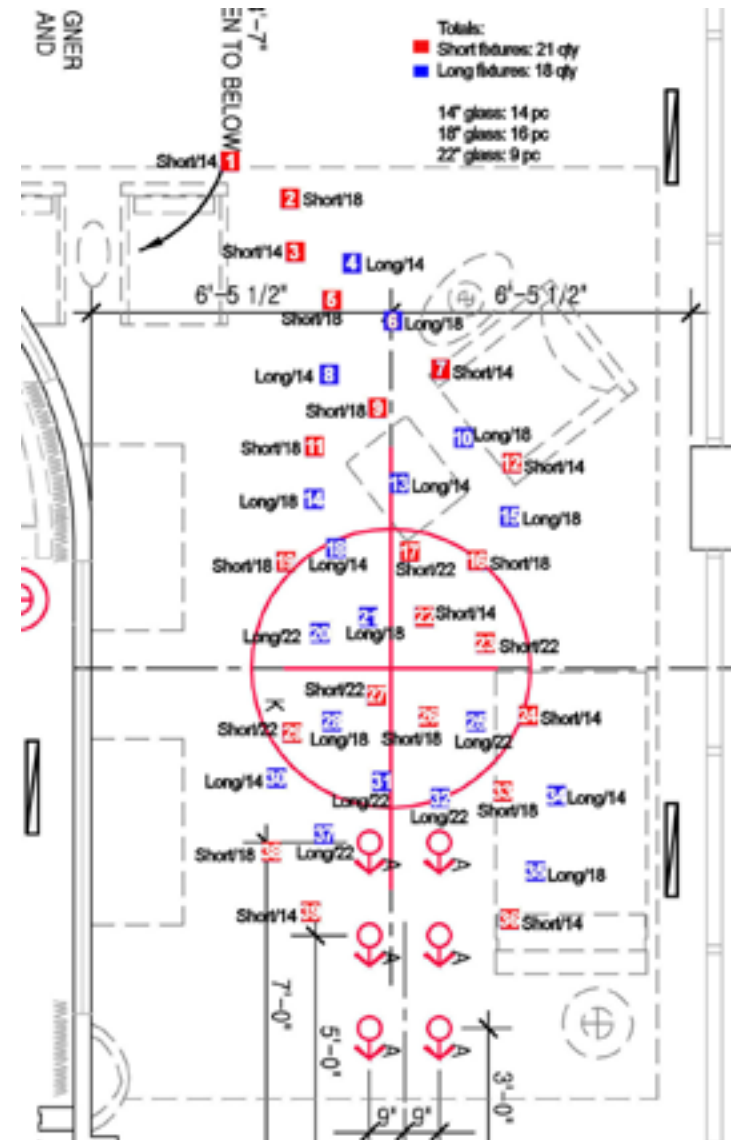


Level 1  
25 pendants



Level 3  
13 pendants

Please read instructions completely before installing assemblies





## GRANITE PARK III

### Oak Tree Chandeliers



A series of three oak tree chandeliers that span the north, south, and elevator lobbies are a combination of steel and glass, built in collaboration with other well-known artists. The glass pattern yields a canopy of green during the day, and the blues of dusk during the night. This project's challenge was designing an oak tree that grew out of the ceiling that would fit through the door. A modular construction, ease of assembly, and an atmosphere of wonder, were the three main components of the installation.







# SPECTRUM CENTER

## Falling Embers

In 2005, Granite Properties approached us in regards to the renovation of the Spectrum Center. The request was to visually fill a thirty-eight foot tall atrium with the illusion of a chandelier to warm the space, resulting with what came to be known as “Falling Embers”.





# GRANITE WESTCHASE II

Sunrise at Matagorda Bay



1.5 tons of cast glass appear to float off the travertine stone wall. The sculpture speaks as much to the negative space as it does to the glass itself. The cylinder lights grouped together represent the cool waters of the sea to the warmth of the sun's morning rise. The exterior perspective is also considered in the overall design.



# GRANITE PARK 17

Soft Motion



Our Park 17 project provided our studio an opportunity to create a conceptual design that represents light in motion. Auspicious yet static, sculpture becomes a metaphorical buffer between the tranquility of the interior and the boisterous conditions outside. The shades were designed to create a sense of movement while the viewer walks throughout the installation.

*“Wimberley Glassworks has been a vital creative partner in helping Granite to “brand” our new buildings with one of a kind lobby lighting ensembles which are always the centerpiece of discussion when we open the buildings to the public.”*

—David R. Cunningham, Granite Properties  
Director, Development & Construction







## TEXAS CHILDREN'S

The Jewel

For the Texas Children's Hospital Pavilion for Women, our task was to imagine a show piece considered the jewel of the hospital. Created, was a feminine accessory that drapes the main lobby like a necklace, at once accenting and guiding patients to the help desk.





# HENRY RESIDENCE

Passionis

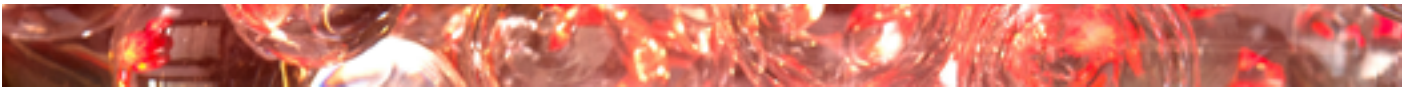


The goal was to light the space according to the owners' passions, accenting the amethyst of wild Irises and the cobalt of deep ocean waters. Our design created a space that brought the vastness of the ocean down to the human scale.

*"I have seen glass all over the world. In your shop it's not about the ego, it's about the artwork. Good creative energy goes into each piece."*

—Mark Henry





## ESPY CORPORATION

### Hover Chandelier

Duplicate chandeliers in different glass color patterns were designed to reflect the graceful curves of the handmade desks below. The lightweight aluminum frame appears to hover over the desk while cradling the colored accent lights that provide generous task lighting.







September 3, 2009

Mr. Tim DeJong  
Wimberly Glass Works  
PO BOX 1724  
Wimberly, TX 78676

Re: Granite/WGW Partnership

Dear Tim,

As we move into production on yet another unique Art Glass Lighting creation for our landmark Uptown Dallas office building, I can't help but reflect upon how difficult it would be to create as many unique projects that we have without a GREAT and UNIQULY TALENTED PARTNER like Tim DeJong.

In the past 4 years since I "discovered" WGW in the Texas Hill Country you have been a vital creative partner in helping Granite to "brand" our new buildings with stunning one of a kind lobby lighting ensembles which are always the centerpiece of discussion when we open the buildings to the public. It's been fun, creative, thought provoking and fulfilling to have been able to work with a true artist who can think outside the box.

One of Granite's six core promises to the business community is "To Each Vender Partner, We Will Reward Excellence with Loyalty". Your performance on multiple projects has earned Granite's continued trust and loyalty. Till the next time we dream up a dream together, take care.

Your friend,

David R. Cunningham  
Director, Development & Construction

GRANITE PROPERTIES, INC.

5601 GRANITE PARKWAY  
SUITE 800  
PLANO, TEXAS 75024

972.731.2300 T  
972.731.2360 F  
WWW.GRANITEPROP.COM



INVENTURE  
DESIGN

**To Whom It May Concern:**

As principal of Inventure design, I have had the pleasure of knowing and working with Tim de Jong for the last 4 years. Tim has been a great collaborator with our Texas Children's Hospital Maternity Center project. I would like to take this opportunity to recommend Tim as a professional artist providing "state of the art" sculptural glass lighting.

Tim is an energetic artist with an understanding of the needs of a design professional, the contractor and the client. Tim takes care of the entire service process from design through detailing and helping with installation. He can meet with the executives to determine the requirements, draws the solutions and presents them for approval and then completes the shop drawings and takes care of making sure the installation goes smooth.

It is for all of these reasons that I offer high recommendation for Tim and Wemberley Glass Works without reservation. Tim's drive, talent and sense of humor makes him a great pleasure to work with.

Sincerely,

James W. O'Neill, AIA

Principal

Inventure Design





September 24, 2012

To Whom It May Concern:

Last summer, I had the great pleasure of inviting Tim de Jong to our new Austin headquarters which were under construction at the time. As a longtime enthusiast of Tim's Wimberley Glassworks, I wanted to explore the possibility of incorporating some of his custom lighting into our lobby space and few possible outdoor locations as well.

On his first visit, Tim spent several hours looking over the space and listening to our requirements, discussing various approaches and recommending solutions that fit both our artistic desires as well as our budget. The concept design that Tim proposed for the new lobby was extremely well received by all the principles at Espy. Within a few weeks of the visit, we were under agreement with commitment from Tim to deliver and install the project by our planned opening in the fall.




Soon after Tim started the initial project we approached him again to see if he could offer some ideas to enhance the look of the two large executive offices in the building. We had recently purchased two very uniquely shaped executive desks for each room, but we had not considered lighting. We were curious to see what ideas Tim would have for fixtures that would provide solid function lighting with at least touch of his artistic flare.

As you can see from the nearby photograph, the results were fantastic! The down-light elements along the bottom of the fixture provide the functional lighting, while the china blue (red on the second office) shades and sweeping lines of the fixture complement the desk lines and add drama and flare to the room without overwhelming it. Tim's delivered designs far exceeded our expectations and now hang proudly in our offices.

Like most major projects, there were some issues along the way. This is usually the true test of an organization, but Tim and his team came through for us in every way. Tim didn't sign-off on the completion of the project until he was sure that we were completely satisfied, which we were!

Tim's is not your typical artist; he is a first class businessman as well with a strong commitment to customer satisfaction. It was a great pleasure to work with him and I would highly recommend his work and the Wimberley Glassworks Team to anyone.

Sincerely,

  
Whitney Harris  
Vice President and Co-Founder of The Espy Corporation

| The Espy Corporation |

**LAWRENCE COSBY**  
Principal, Studio Director,  
Good Fulton & Farrell Architects  
2808 Fairmount Street Suite 300  
Dallas, TX 75201  
tel: (214) 303-1500  
lawrence.cosby@gff.com

**DAVID R. CUNNINGHAM,**  
Director, Development & Construction  
Granite Properties, Inc. Suite 800  
5601 Granite Parkway  
Plano, TX 75024  
tel: (972) 731-2300  
dcunningham@graniteprop.com

**JIM DEITZMANN**  
Sr. Vice President  
Kirksey Architecture  
6909 Portwest Drive  
Houston, TX 77024  
tel: (713) 426-7436  
jimd@kirksey.com

**WHITNEY HARRIS**  
Vice President and Co-Founder  
The Espy Corporation  
13033 Trautwein Rd  
Austin, TX 78737  
tel: (512) 261-1016  
info@espcorp.com

**JAMES O'NEILL AIA**  
Inventure Design  
9 Greenway Plaza Suite  
Houston, TX 77046  
tel: (713) 524-5555  
info@invdesgroup.com

**DONALD R. POWELL**  
Principal  
BOKA Powell  
8070 Park Lane Suite 300  
Dallas, TX 75231  
tel: (972) 701-9000  
dpowell@bokapowell.com

**OLUTOLA ADETONA, MD  
& OMOLOLA ADETONA, DDS**  
Practical Approach Pediatrics  
9480 Huebner Rd, Suite 400  
San Antonio, TX 78240  
tel: (210) 697-3900  
oadetona@practicalapproachpediatrics.com